

User Manual

Artisul Pen Tablet | Model : A801

Windows and Macintosh

 **ARTISUL**

Precautions

1. Please read this manual carefully before using, and keep it well for future reference.
2. Before cleaning this product please unplug the power cord and wipe with a soft damp cloth, do not use any kind of detergents.
3. Don't expose this product to water or other liquids. Take care to never spill liquids on the tablet and the digital pen. Otherwise, it may lead to product failure or electric shock.
4. Do not put the pen tablet on unstable places or places easily accessible to children.
5. Turn off the pen tablet in places where the use of electronic devices is not allowed. As the use of electronic devices in some places (in an airplane, for example) may cause other electronic devices to malfunction, so please turn off the pen tablet on such occasions.
6. Do not disassemble or modify the pen tablet or digital pen, which may cause damage to the product. Also, such behaviors will invalidate your warranty.
7. While getting the components replaced, please use the substitute components specified by the manufacturer. Unauthorized component replacement might cause fire, electric shocks or other dangers.
8. Do not insert foreign objects into the USB port or any other openings of this product. Foreign object inside the product may lead to malfunction, burn or electric shock of the product.

Contents

Precautions	2
1. Product Overview	4
1.1 Tablet Introduction	4
1.2 Product and Accessories	4
1.3 Tablet Connection	5
1.4 Driver Installation	6
1.5 Connecting to Android Phone & Tablet	7
1.6 Pen Nib Replacement.....	8
2. Basic Operation	9
2.1 Digital pen	9
2.2 Pen tablet	12
3. Mac Whitelist Settings	13
4. Function Setting	13
4.1 Device Connection Prompt	14
4.2 Working Area Setting	15
4.3 Shortcuts Keys Function Setting	17
4.4 Pen Buttons Function Setting	19
4.5 Pressure Sensitivity Setting	20
4.6 Pen Pressure Testing	21
4.7 Enable the Windows Ink Feature	22
4.8 Mouse Mode	23
4.9 Customize Press Keys and Pressure Curve	23
4.10 Data Export and Import	25
5. Specifications	26
6. Trouble Shooting	27
7. Contact Us for After-sell Service	28

1. Product Overview

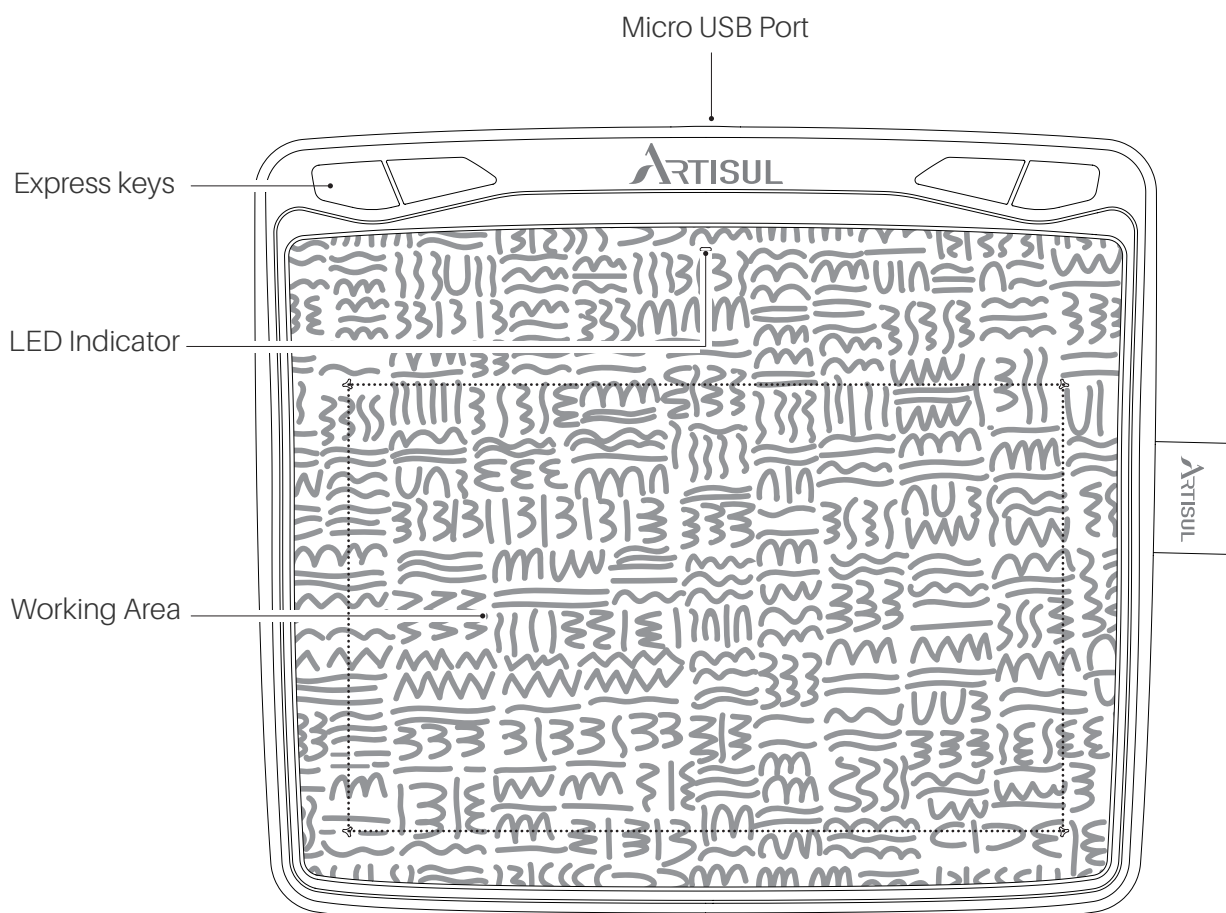
1.1 Tablet Introduction

Thank you for purchasing the Artisul pen tablet A801. A801 is a professional battery-free pen tablet applying the latest technology, which is able to provide you with pen-on-paper experience and render various brushstroke effects and colors vividly. A801 is to greatly facilitate your writing and drawing, and improve your work efficiency.

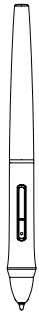
To give you a better understanding and using of your tablet, please read this user manual carefully. The user manual only shows the information under Windows, unless otherwise specified, this information applies to both Windows and Macintosh systems.

1.2 Product and Accessories

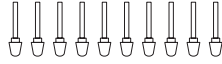
1.2.1 Graphics Tablet



1.2.2 Packing List



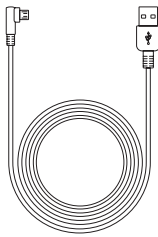
Pen P62-G



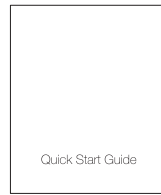
Pen Nibs



Pen Nib Clip



Micro USB Cable



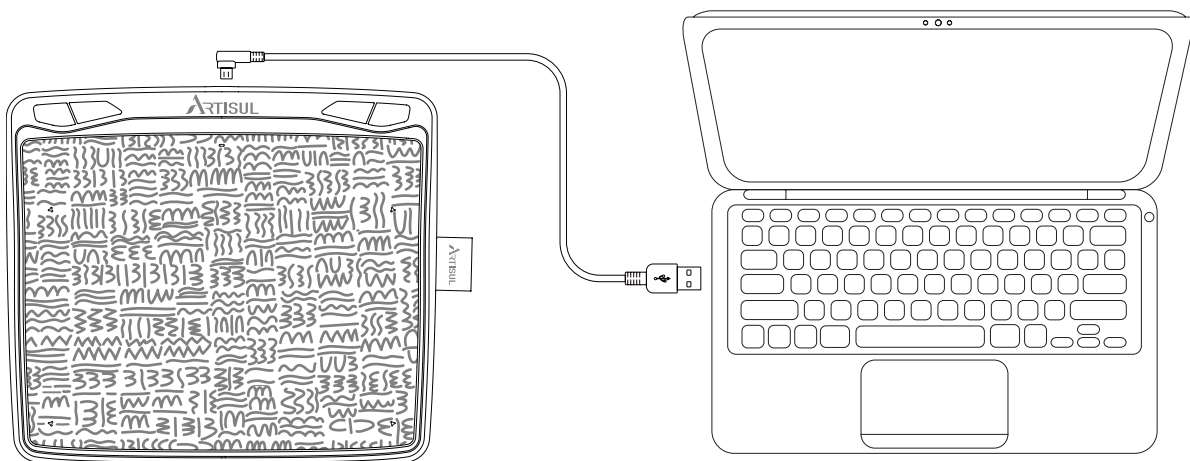
Quick Start Guide



Warranty Card

1.3 Tablet Connection

Connect the tablet to your computer with USB cable.



1.4 Driver Installation



1.4.1 OS Support

Windows 7 or later, macOS 10.12 or later, Android 6.0 or later

1.4.2 Driver download and installation

Please download the driver from our official website :

<https://www.artisul.com/downloads/>

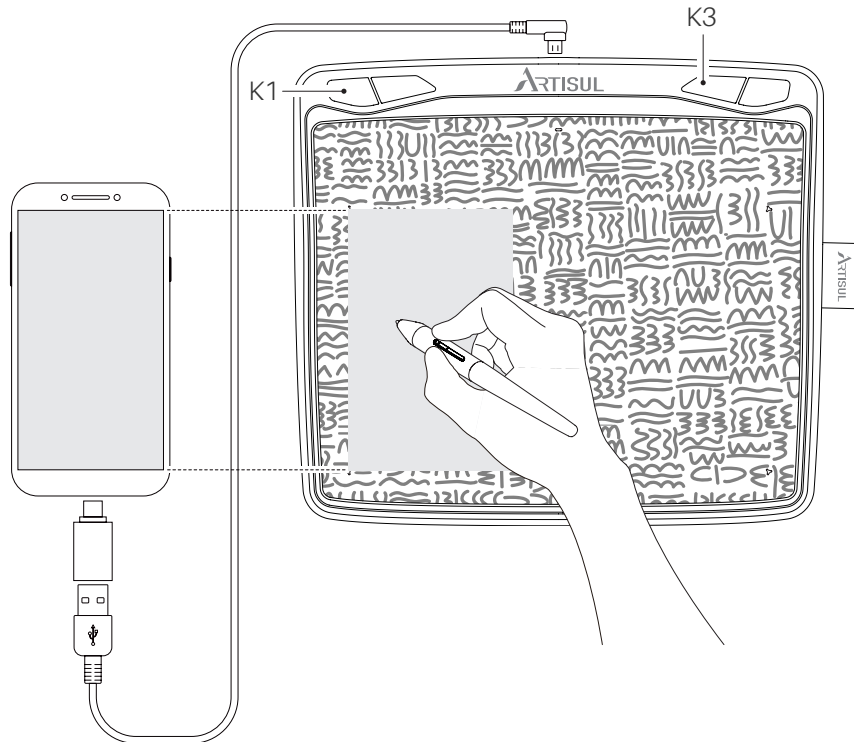
After the driver is installed successfully, you can find the icon  in the system tray area; when you connect the tablet to the computer, you will see a colored icon , indicating that the computer has recognized the pen tablet and you can start working with it.

Notes :

1. Before installing, you need to uninstall other driver of similar products, including the old driver of this product.
2. Before installing, please close all graphics software and anti-virus software to avoid unnecessary mistakes.

1.5 Connecting to Android Phone & Tablet

1. Please use Android phone/tablet in portrait mode.
2. Please make sure that your phone/tablet OS is Android OS 6.0 or later, and supports OTG function.
3. For some models, you need to go to the phone or tablet "Settings" then enable "OTG" function.

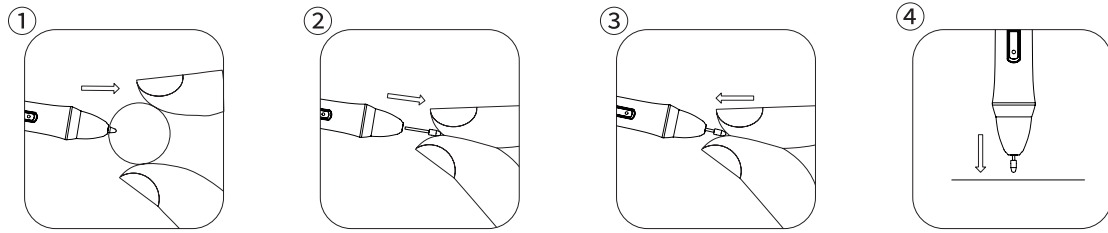


Notes :

1. The pen tablet can work without installing any driver into your phone/tablet.
2. Once connected, the tablet will automatically enter the phone mode, in which the pen can only work in the left gray area(121.1 x 68.1mm).
3. If it fails to recognize the tablet as the phone mode, please press the button K1,K3 at the same time for 3 seconds to enter phone mode.
4. Please note that the express keys on the pen tablet and the buttons on the pen are not supported in phone mode.

1.6 Pen Nib Replacement

The nib will wear off after using for a long time, then you need to replace a new nib.

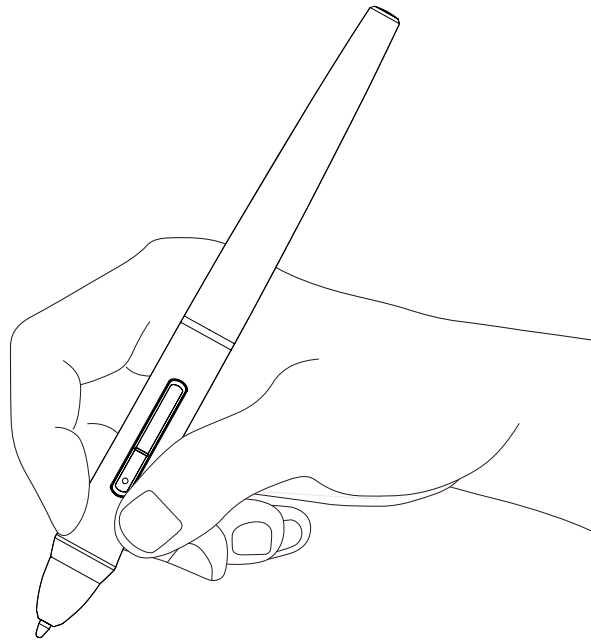


2. Basic Operation

2.1 Digital pen

2.1.1 Gesture

Hold the digital pen just like holding a regular pen or pencil. Adjust your grip position so that you can easily press the pen buttons with your thumb. Please be careful not to accidentally press the buttons when using the pen for drawing or positioning.

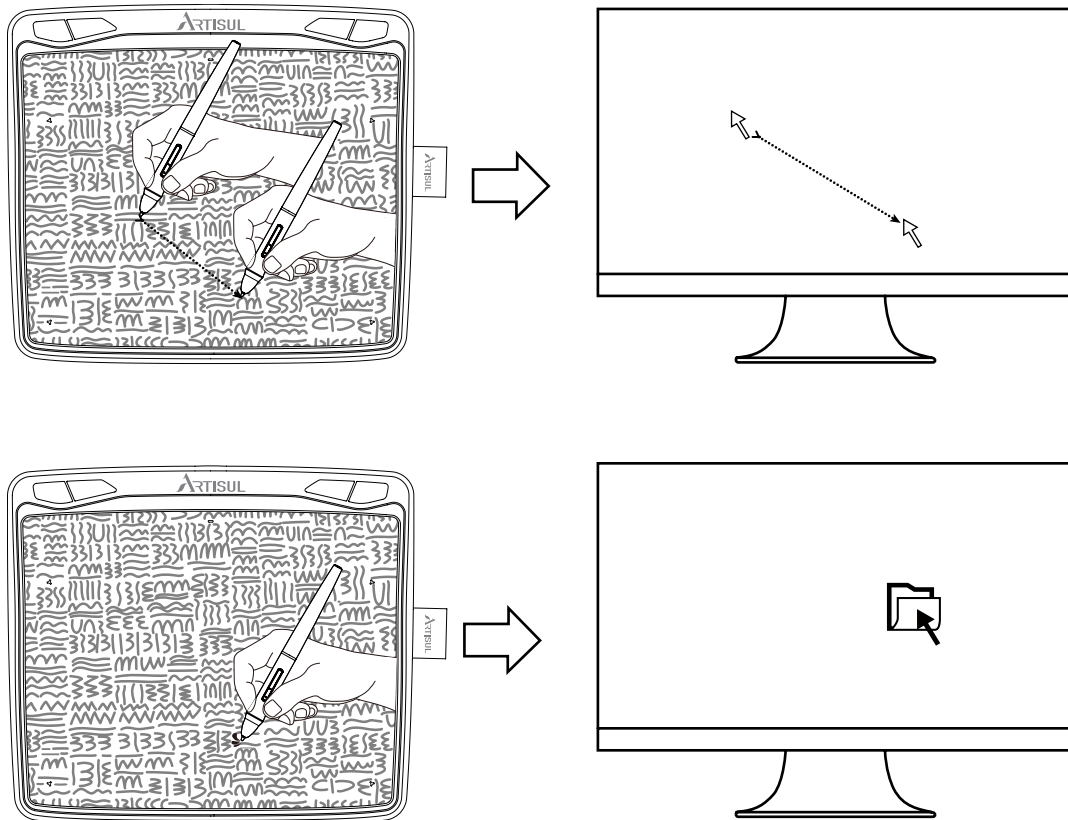


Note :

When not in use, the digital pen should be placed on the desktop steadily and be prevented from falling, otherwise it may suffer from damage.

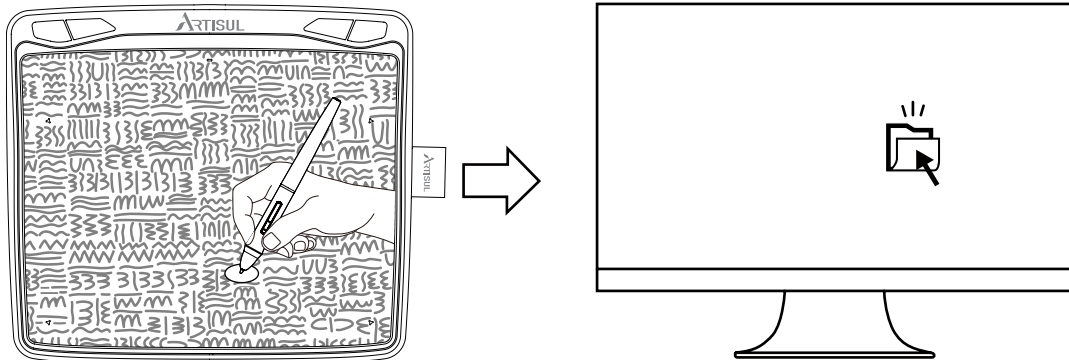
2.1.2 Cursor position

Move the pen tip slightly above the active area without touching the tablet, and the cursor will move to the new position accordingly. Press the pen tip on the tablet to make a selection. Tap the tablet once with the pen tip, or press it to the tablet with certain pressure to select the item.



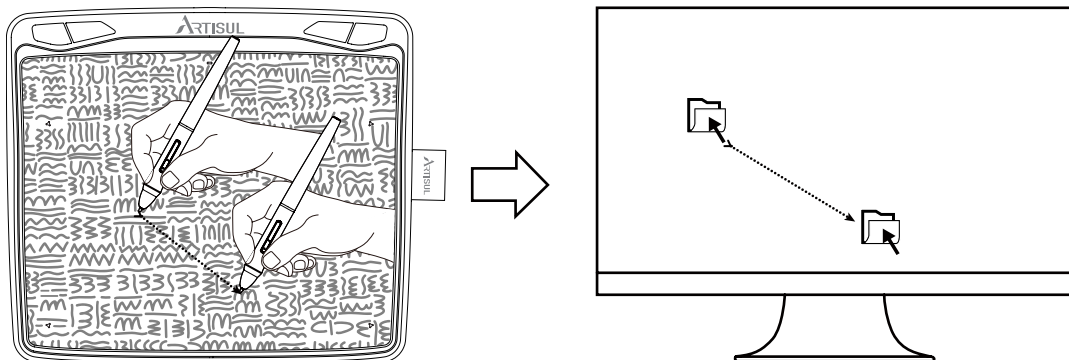
2.1.3 Tap

Tap the pen nip once on the tablet to highlight or select an item on the computer, and then double-tap to open it.



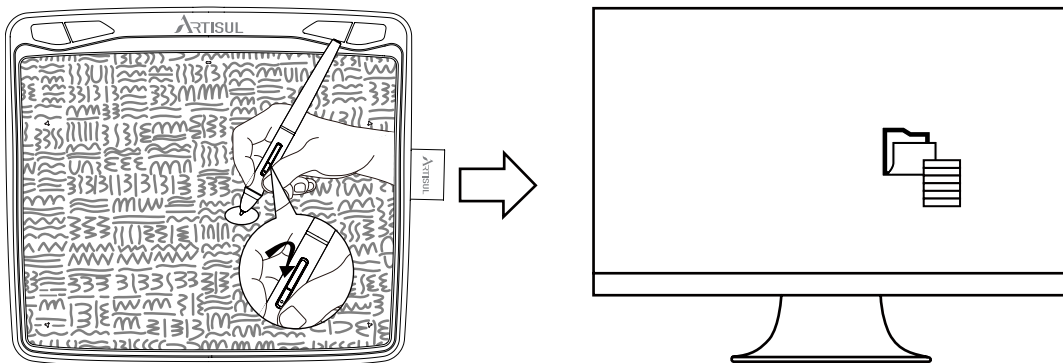
2.1.4 Move

Choose an item, and then slide the pen tip on the tablet to move its position on the computer.



2.1.5 Pen button

The two buttons of the pen can be programmed to different functions respectively. There is no need to touch the pen tip to the tablet to use the programmable buttons. The two buttons can function well as long as the pen tip is within 10 mm of the active area of the tablet.



2.2 Pen tablet

2.2.1 Press key

There are 4 press keys on the pen tablet and you can program them to different functions according to your own habits to improve work efficiency.

2.2.2 LED light

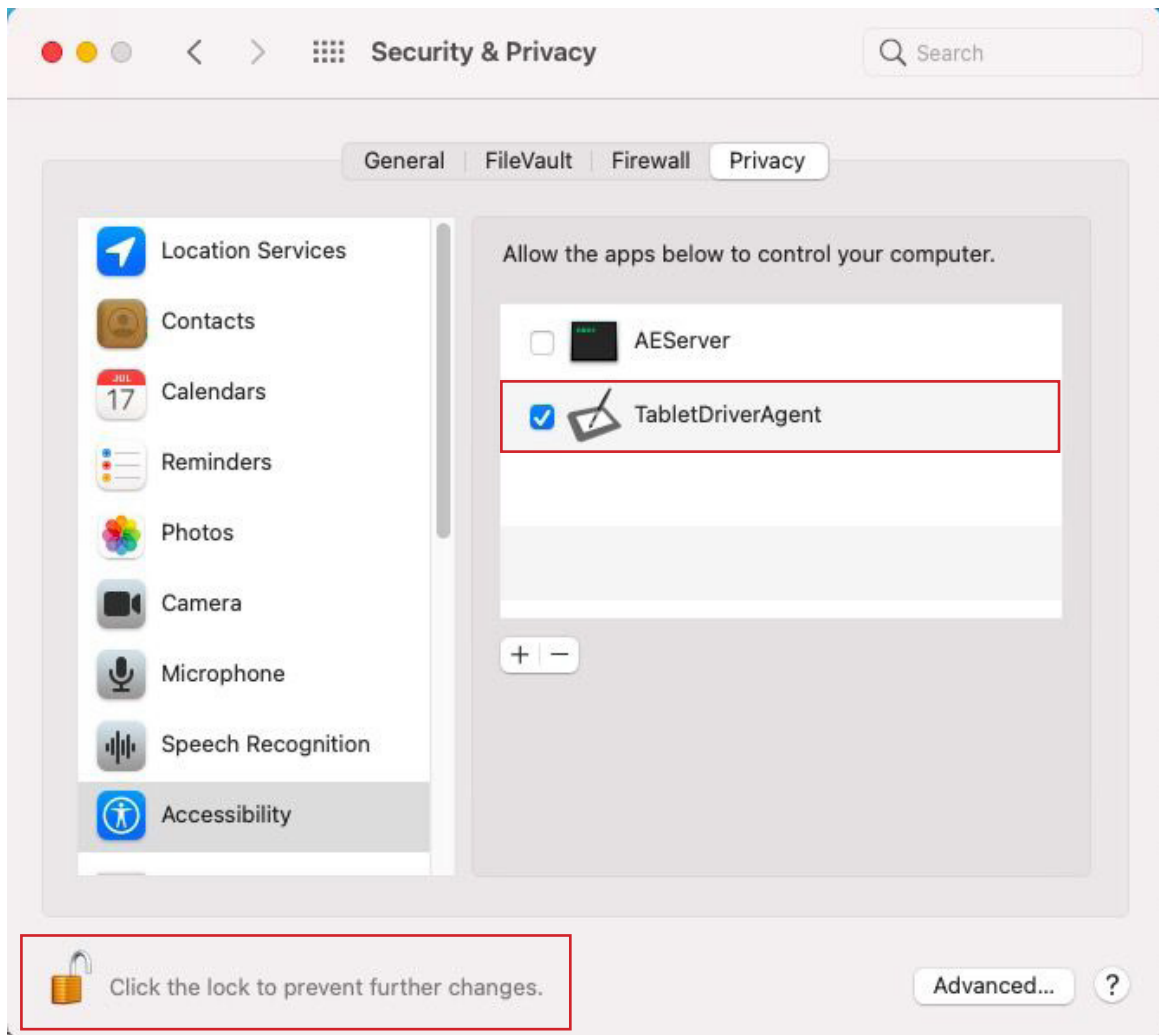
The LED light comes in single color.

When you press any press key or the digital pen touches the tablet, the LED light will show a high brightness. When the tablet is not working, the LED light will be in low-light mode.



3. Mac Whitelist Settings

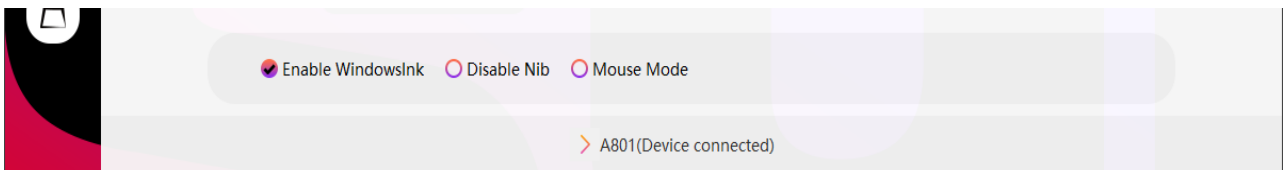
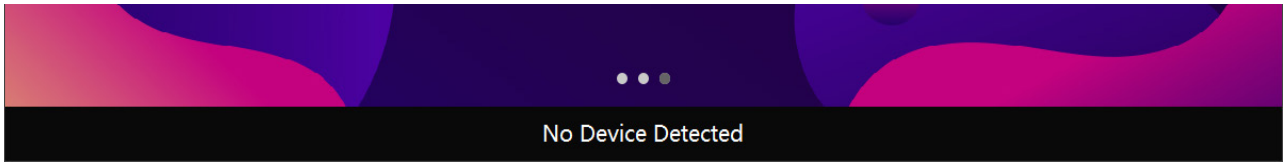
1. Open the downloaded driver and move it into the "Applications";
2. Open "Applications", click the driver that has been placed in "Applications", and then click "Open" in the pop-up window ;
3. After the above steps, the installed driver will be displayed. Use the digital pen to tap on the pen tablet, and then the "Accessibility Access" window pops up. Click "Open System Preferences", and "Security & Privacy" window appears. Click the lock icon in the lower left corner to make changes, enter password, then check the driver, and finally the product is enabled.



4. Function Setting

4.1 Device Connection Prompt

1. No Device Detected: The computer does not recognize the tablet.
2. Device connected: The computer has recognized the tablet.



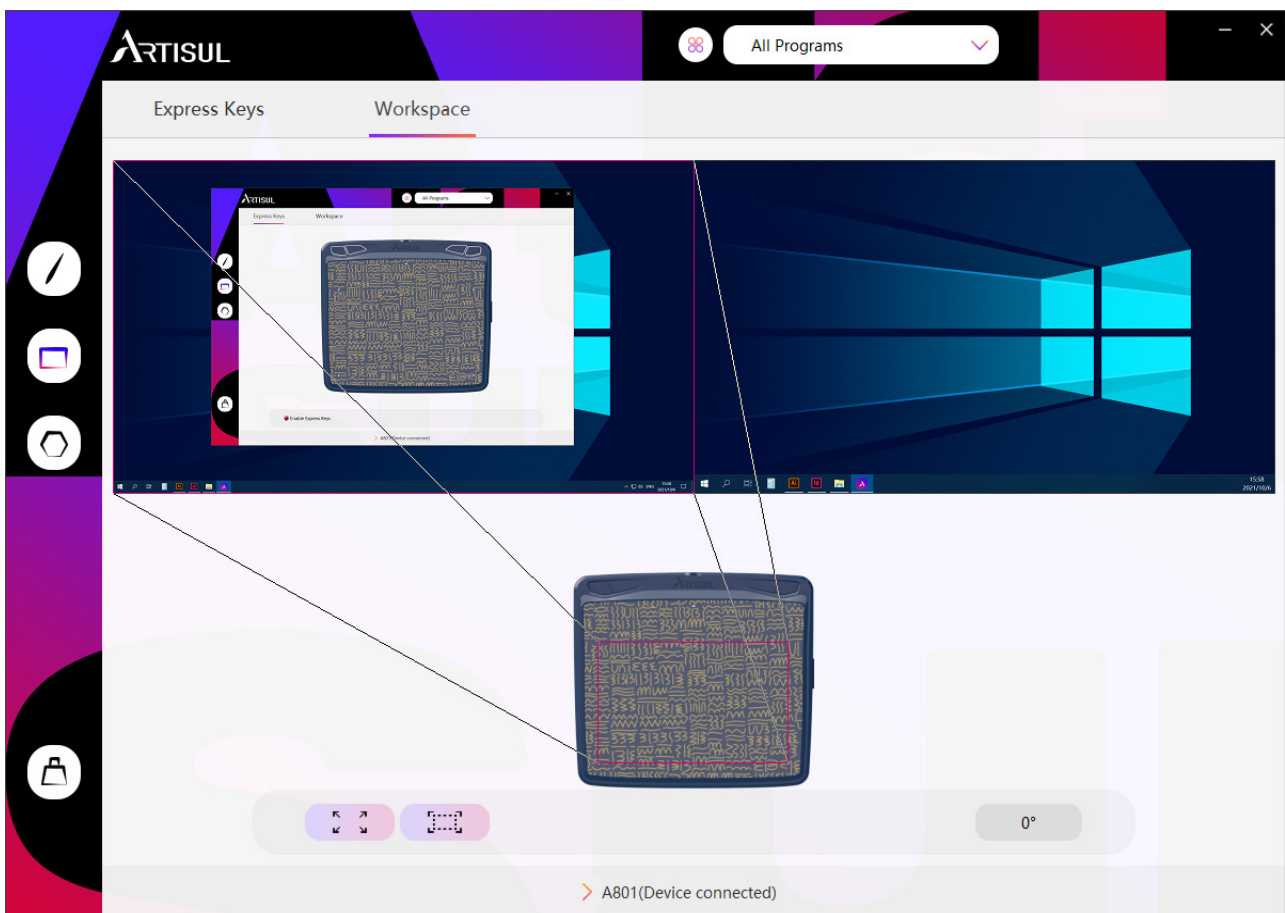
4.2 Working Area Setting

4.2.1 Using Multiple Monitors

Select the monitor to define the relationship between pen movement on the tablet and cursor movement on the monitor screen.

By default the entire active area of tablet maps to the entire monitor. If more than one monitor is in use and you are in extended mode, you need to choose the related monitor on the driver interface which you are going to map to.

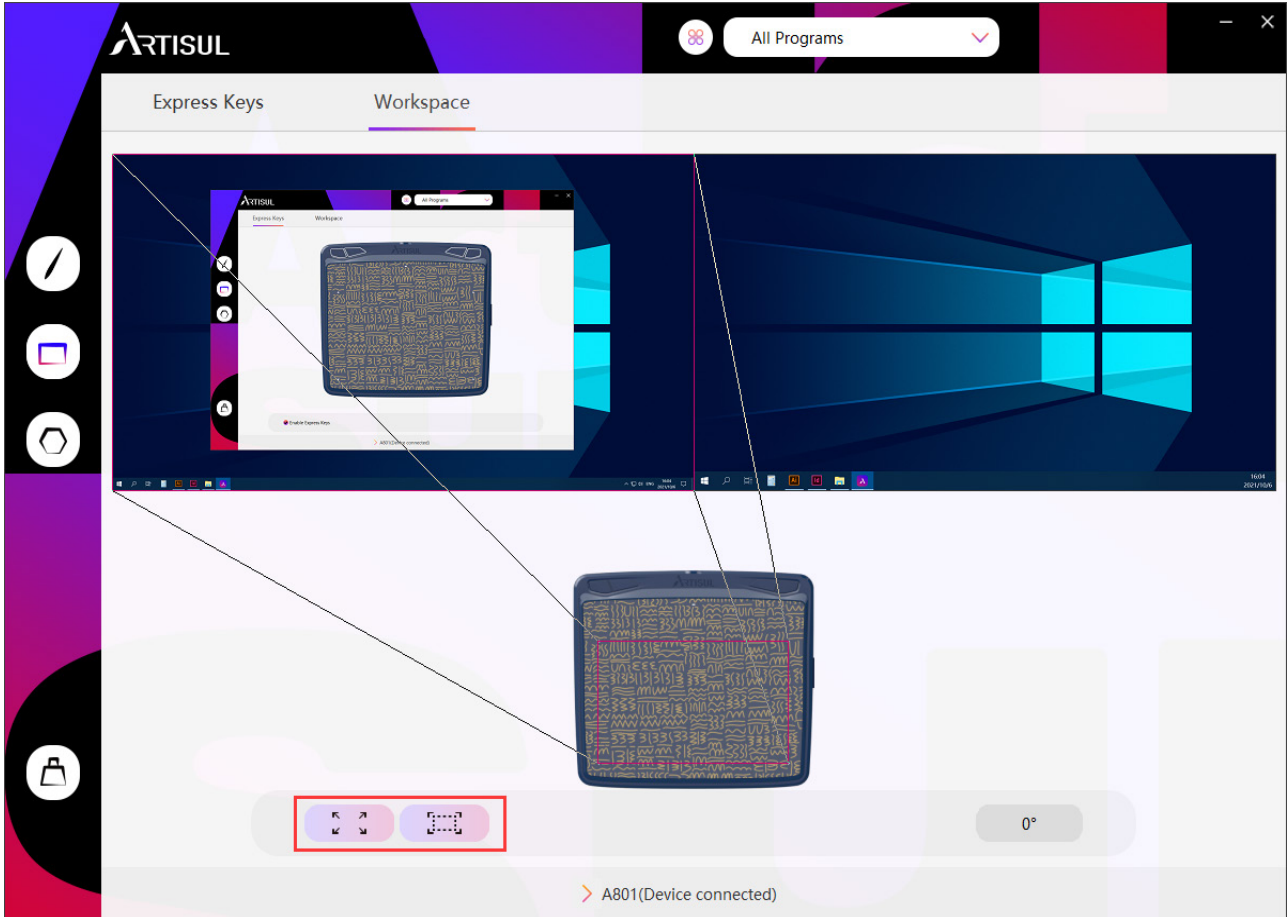
If your monitors are in mirror mode (All monitors display the same content), the tablet maps to the entire space on each monitor and the screen cursor is displayed on each monitor simultaneously.



4.2.2 Working Area Setting

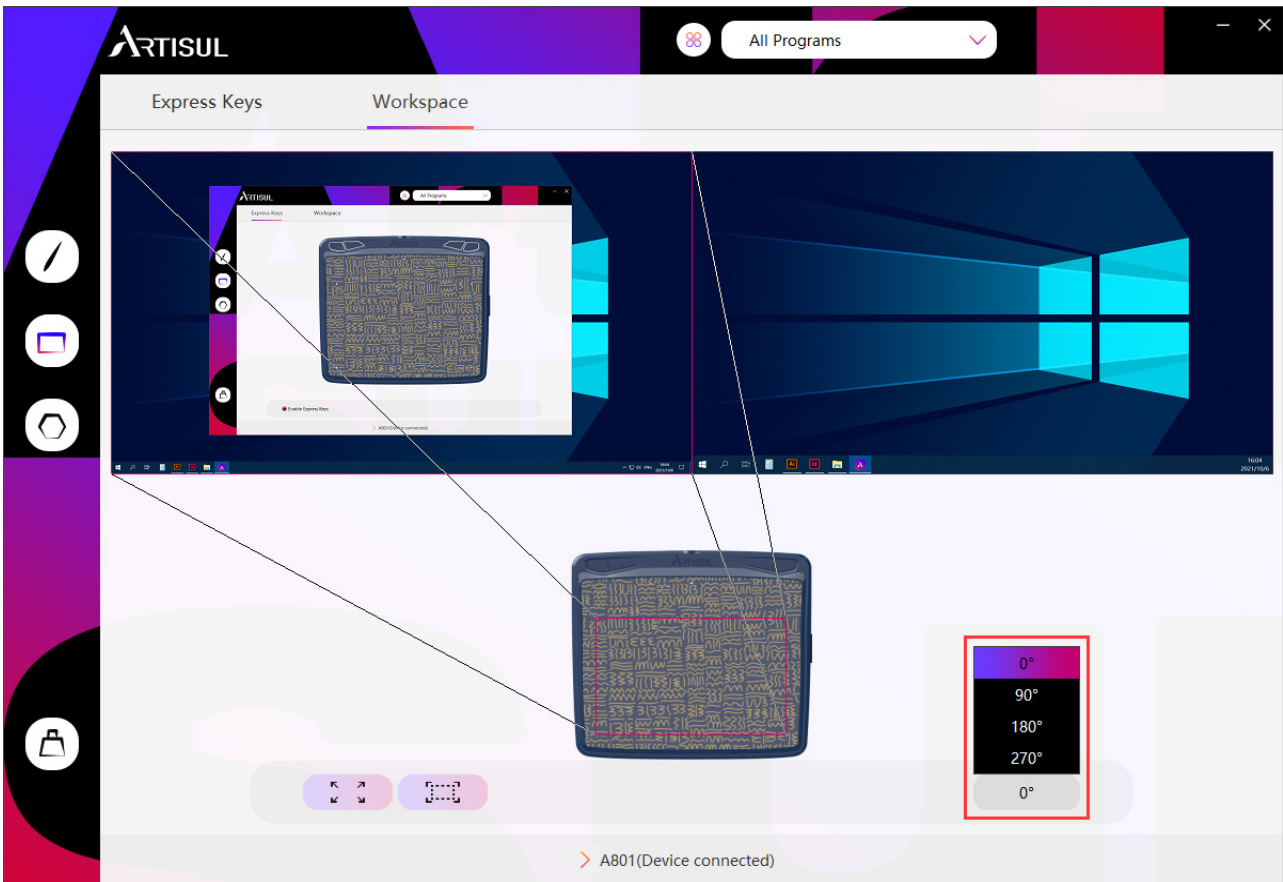
Define the tablet area that will be mapped to the screen area.

1. Full Area : the entire active area of the tablet. This is the default setting.
2. Custom Area : Drag the corners of the foreground graphic to select the screen area.



4.2.3 Rotate Working Area

By changing the direction of the tablet to adapt to the left and right hand operation. We provide four directions of choice.

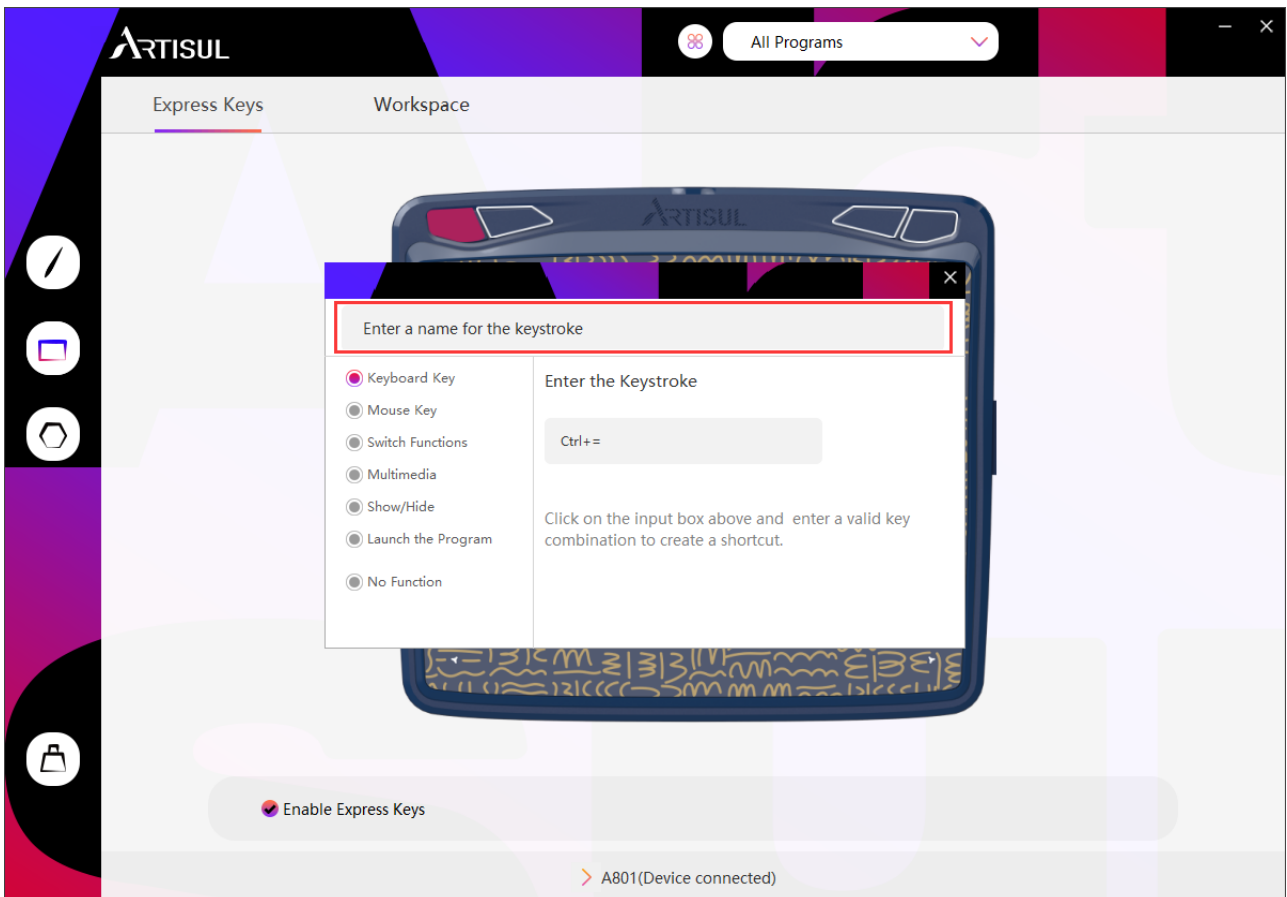


4.3 Shortcuts Keys Function Setting

Default Setting : Place the cursor on the shortcut key or click the shortcut keys to find the default values.

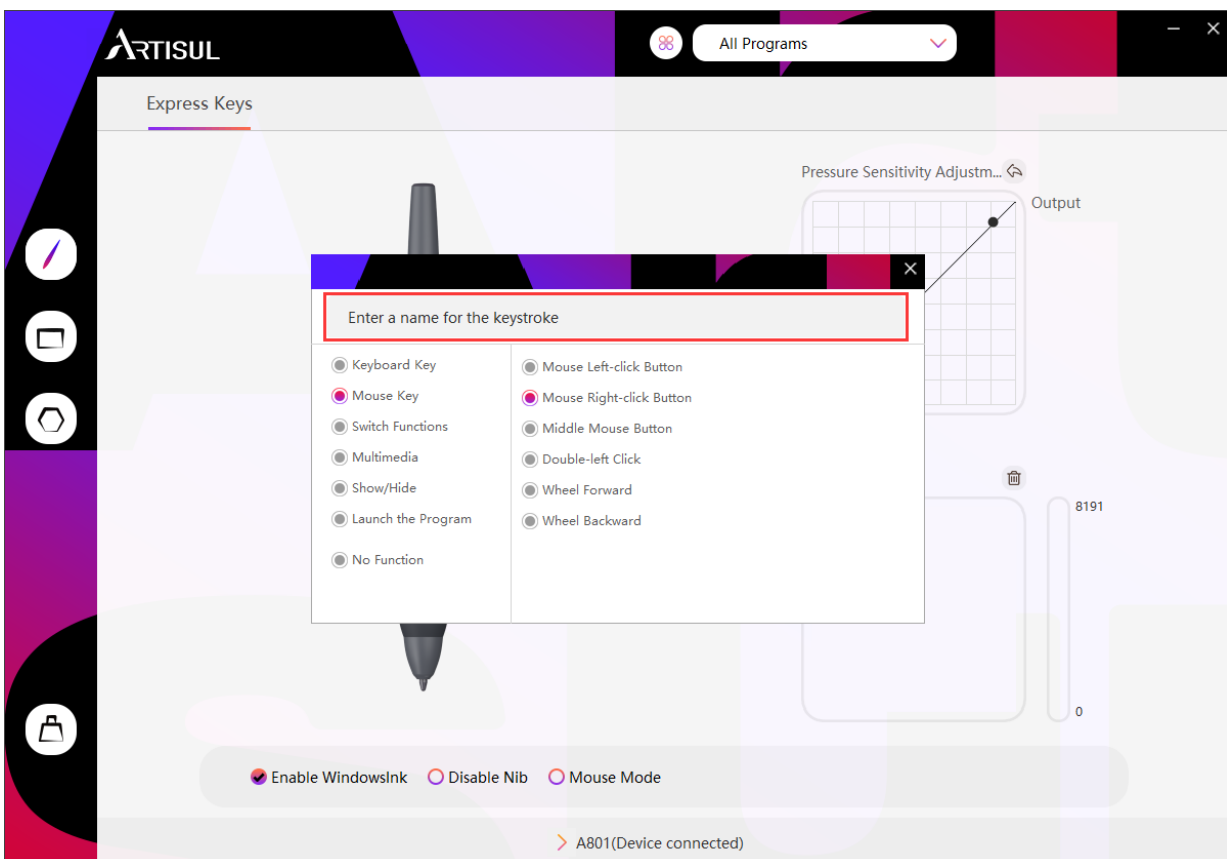
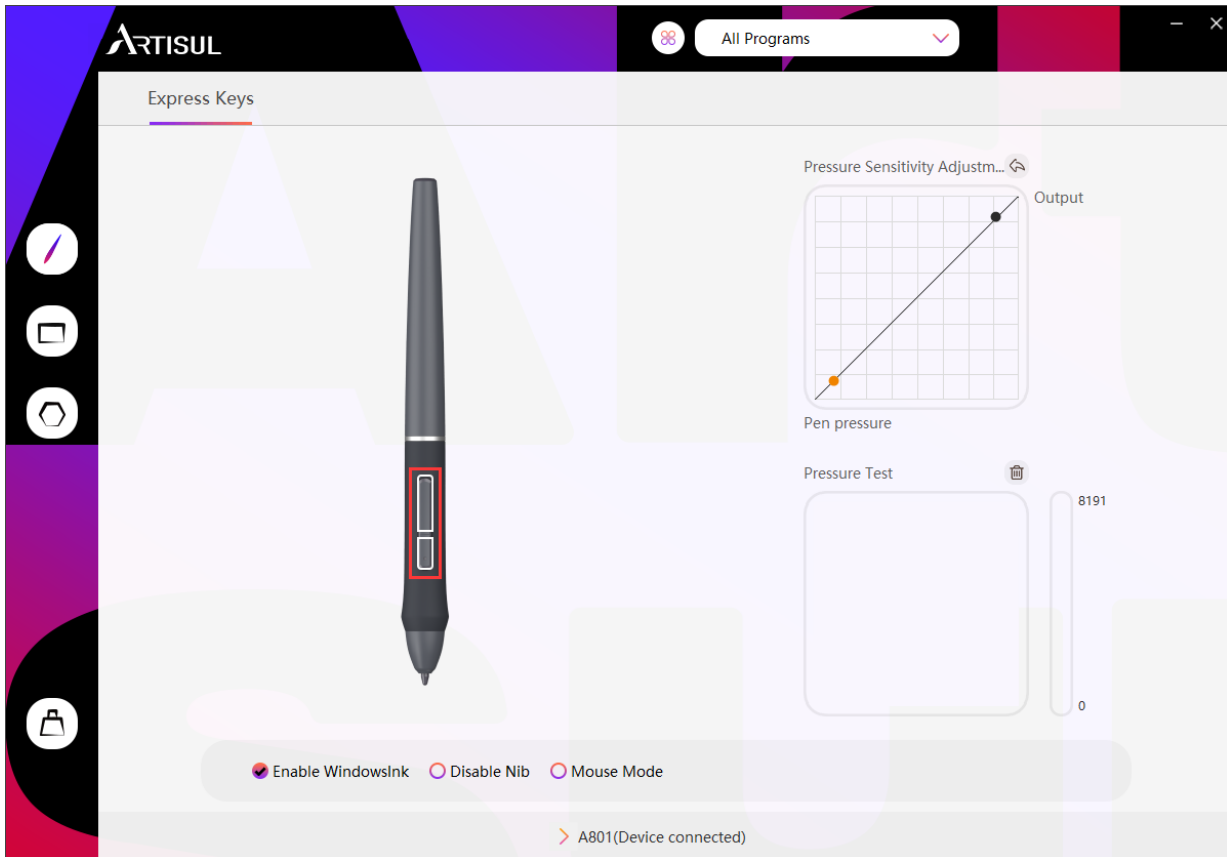
Customized Setting : Select the function to be achieved on the pop-up dialog box , and it will be saved automatically.

Enable/Disable Press Keys : Check/Uncheck "Enable Press Keys".



4.4 Pen Buttons Function Setting

Customized Setting : Select the function to be achieved on the pop-up dialog box, and it will be saved automatically.

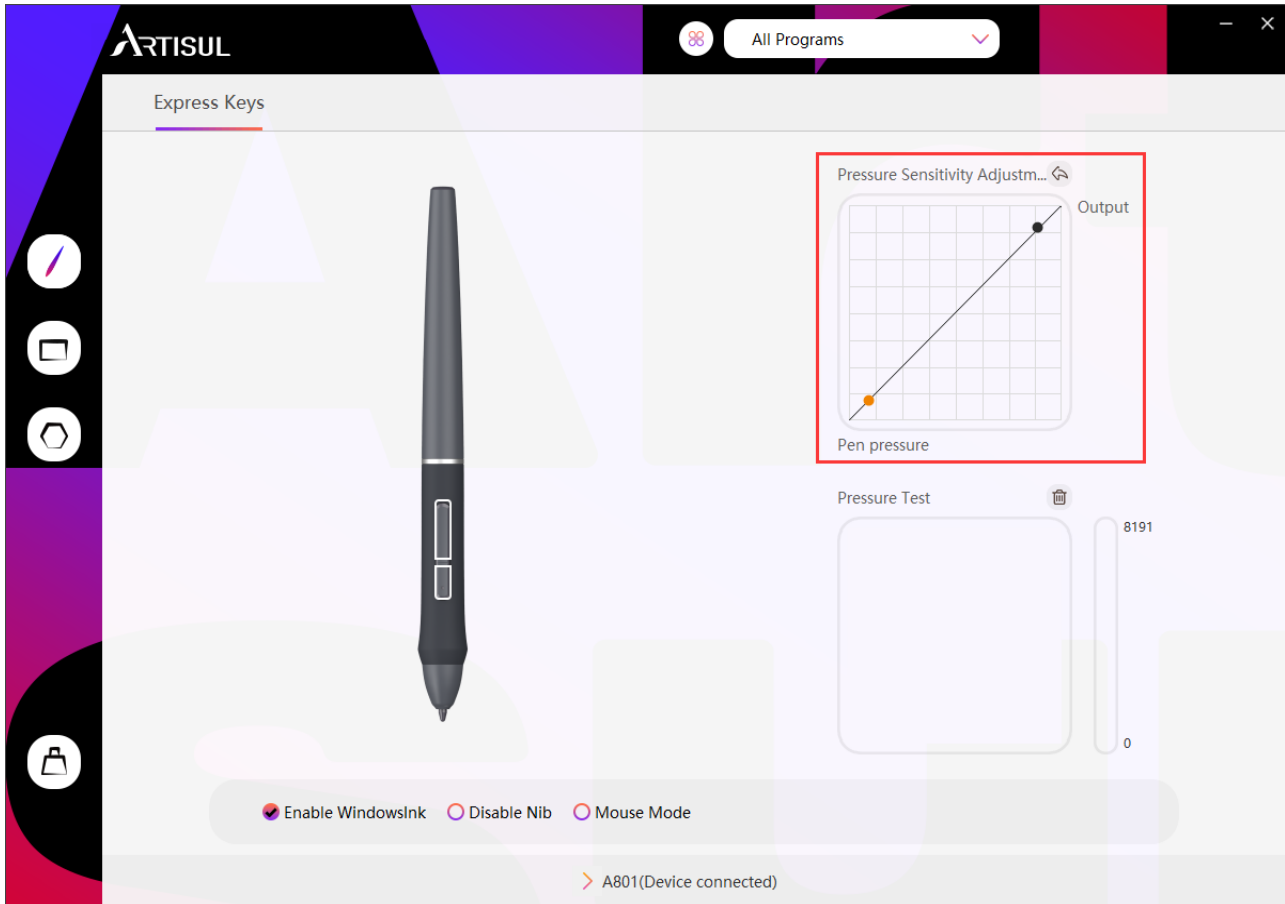


4.5 Pressure Sensitivity Setting

The pressure sensitivity will be changed by dragging the points of the pressure curve.

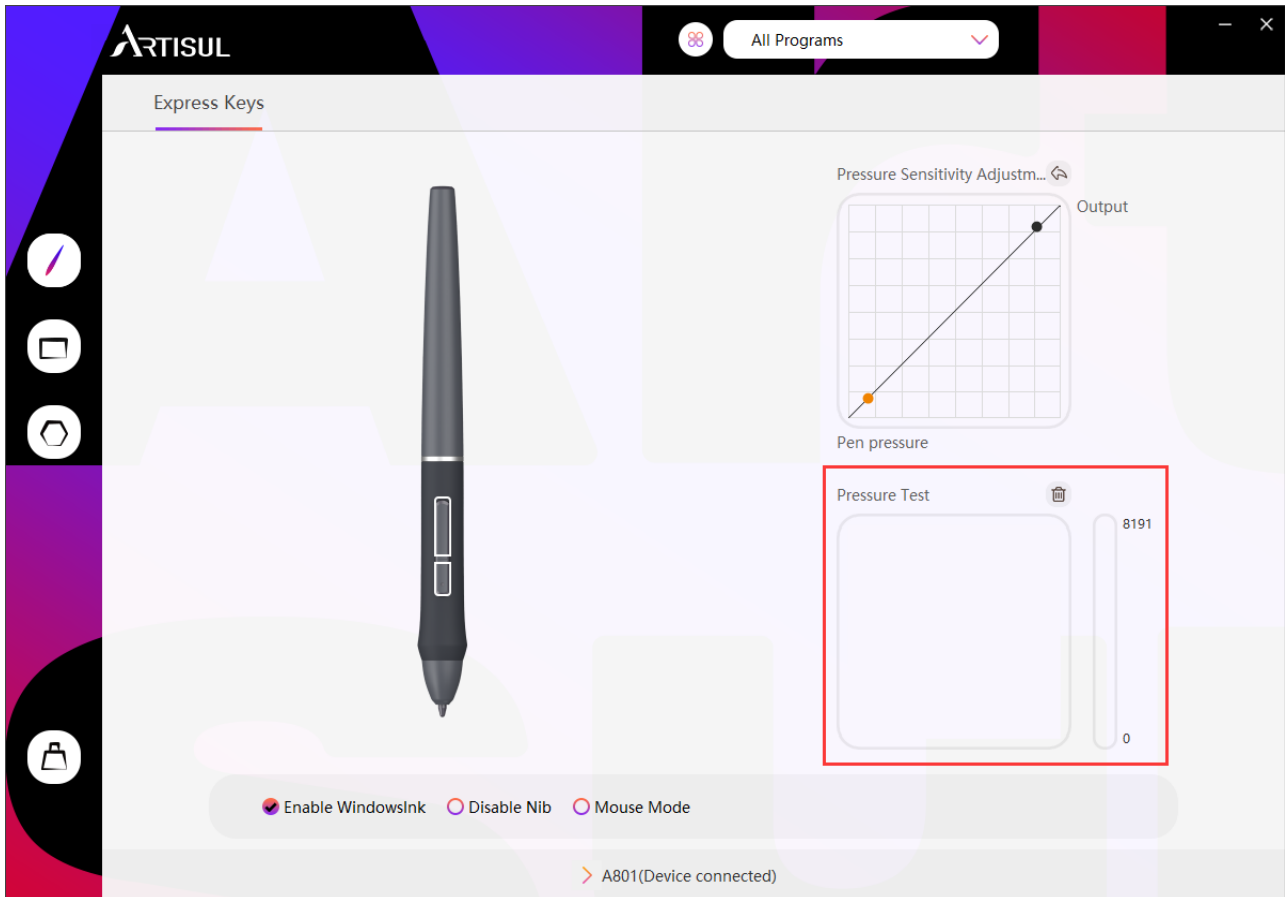
Drag the points to the upper left for higher sensitivity.

Drag the points to the lower right for lower sensitivity.



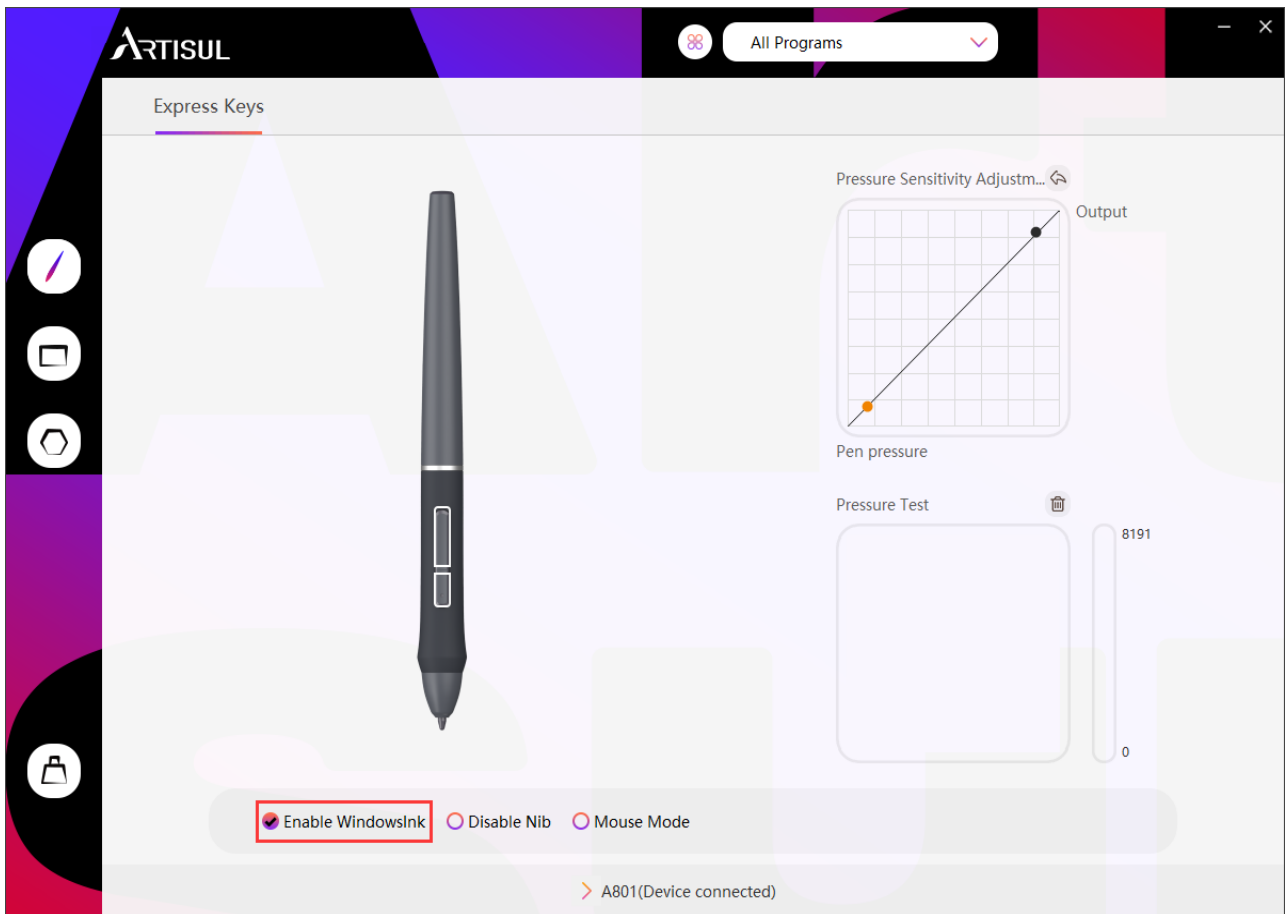
4.6 Pen Pressure Testing

You can gradually apply pressure to the stylus on the screen to test the pressure level.



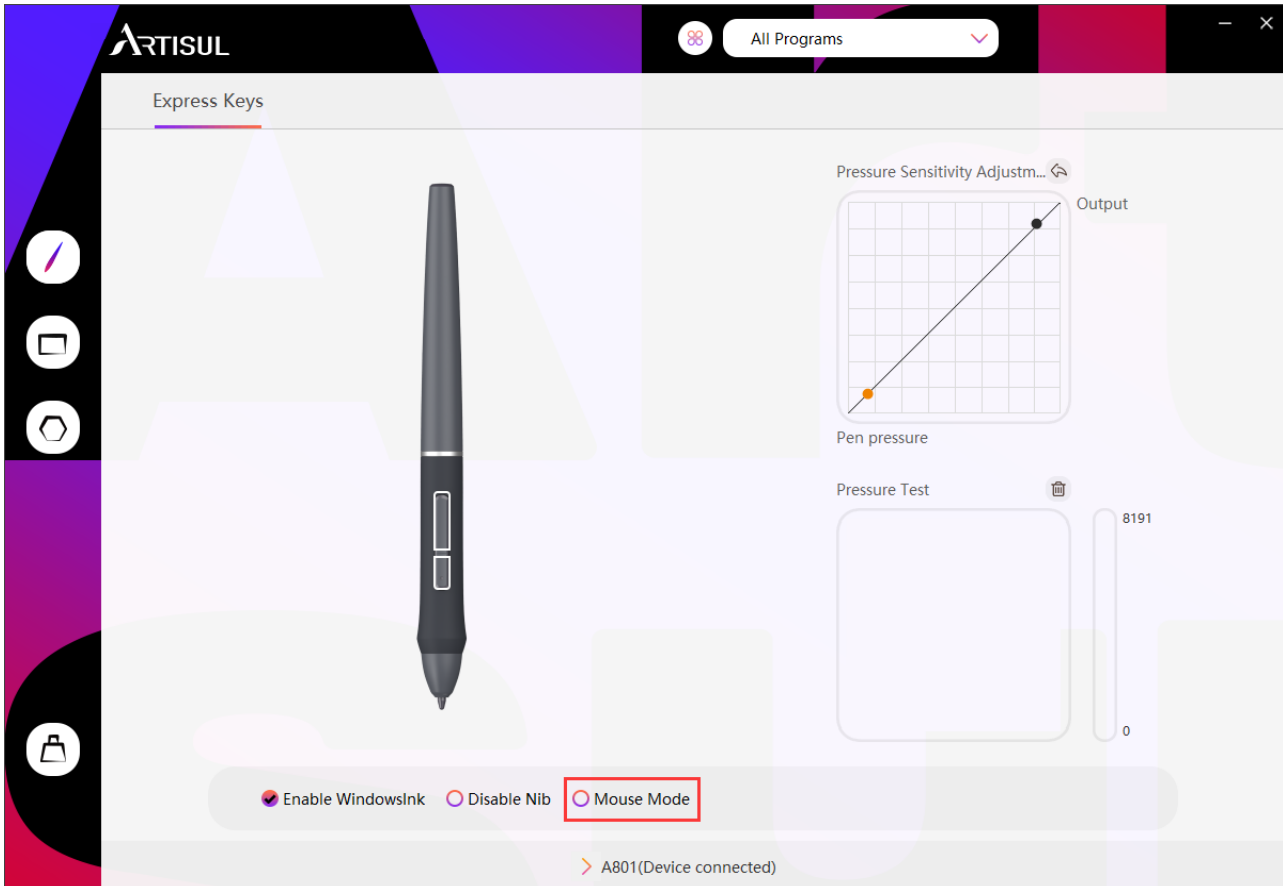
4.7 Enable the Windows Ink Feature

Microsoft Windows provides extensive support for pen input. Pen features are supported in such as Microsoft Office, Windows Journal, Adobe Photoshop CC, SketchBook 6 and so on.



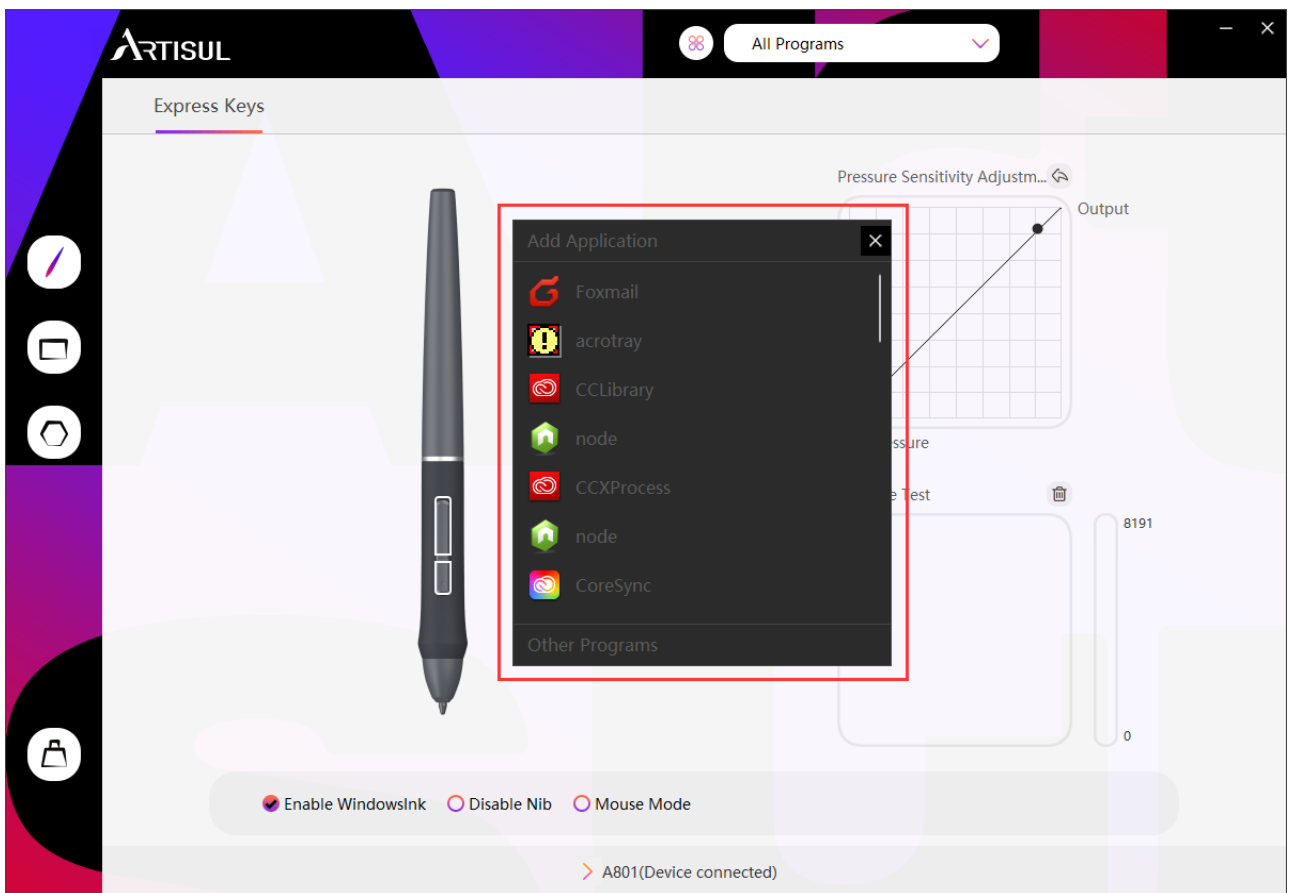
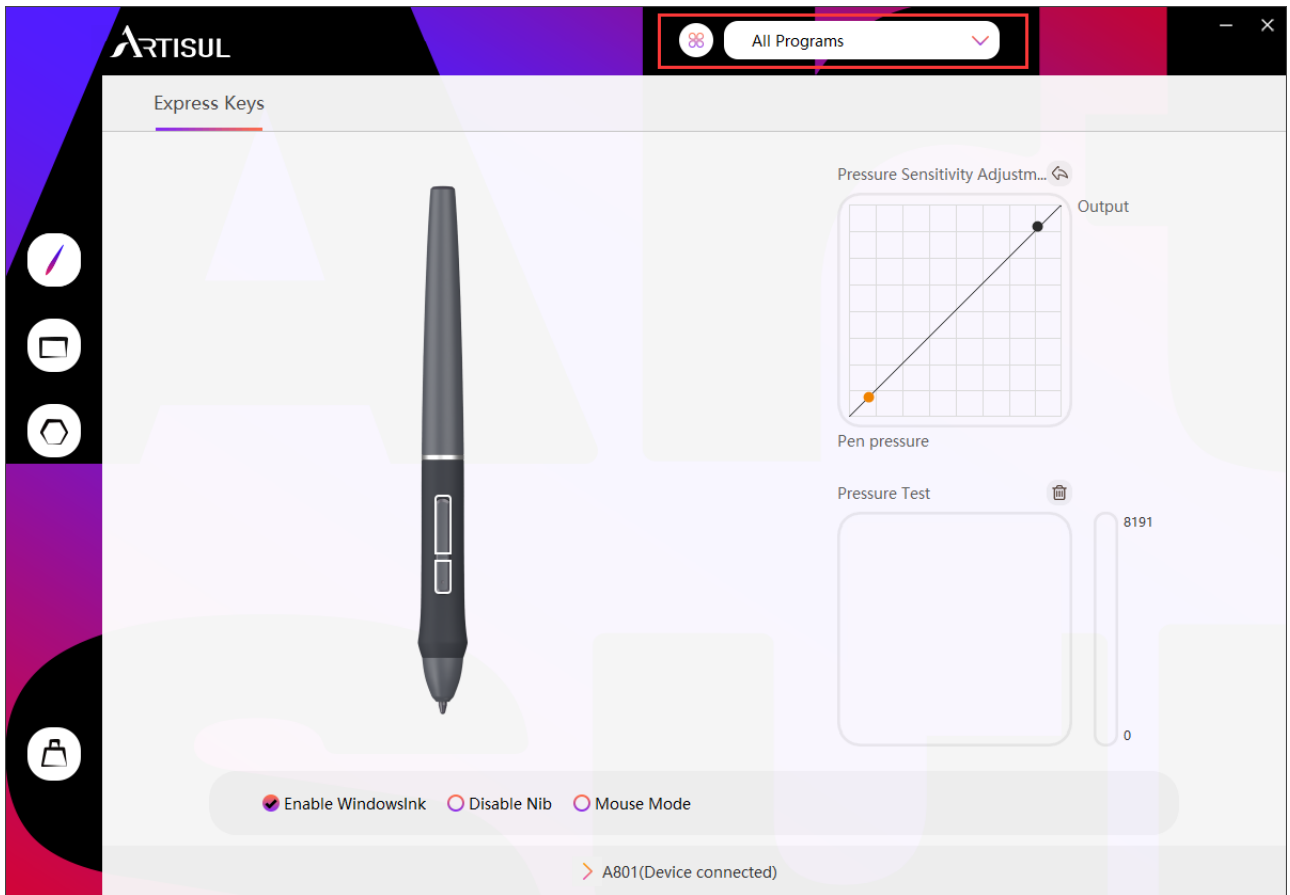
4.8 Mouse Mode

As shown below, check the checkbox in front of the mouse mode to open the mouse mode. Under mouse mode, when you move the pen, the cursor moves following the relative coordinate principle, similar to moving the cursor with the mouse. This means you can click icons or select options at the edge of the screen without moving the pen to the edge of the working area.



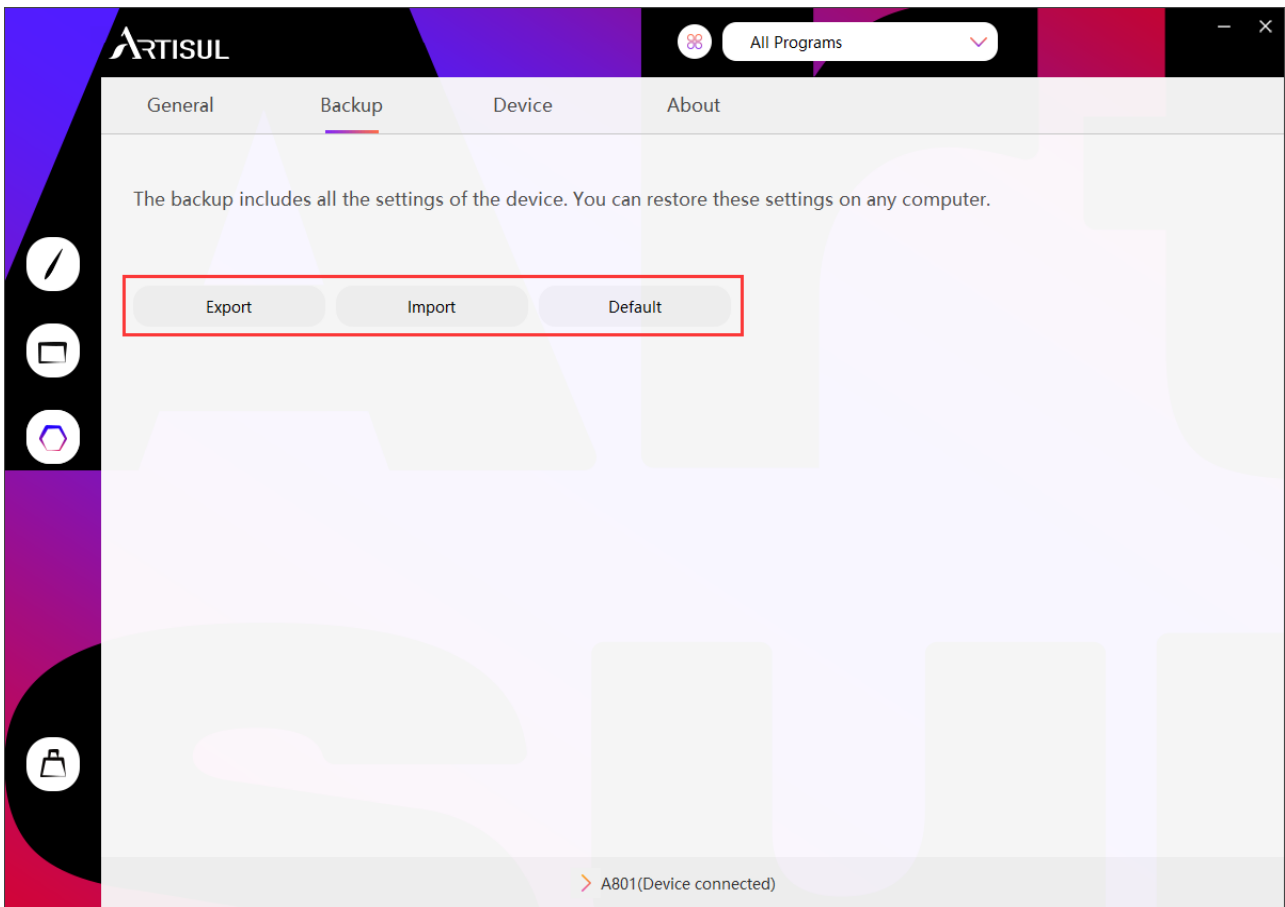
4.9 Customize Press Keys and Pressure Curve

You can customize the function of press keys and pressure curve for different program. Select a program, customize the function of press keys, and adjust the pressure curve, the settings will be automatically saved.



4.10 Data Export and Import

The driver supports exporting and importing your custom configuration data of the product, which is convenient for you to use different software and avoid the trouble of repeated settings.



5. Specifications

Model A801

Touch Technology	Battery-free EMR
Working Area	193.8 x 121.1mm The diagonal is 9 inches(9inch)
Dimension	243.94 x 215.6 x 7.8mm
Net Weight	379.4g
Touch Resolution	5080LPI
Report Rate	≥266PPS
Accuracy	±0.3mm
Pen Sensing Height	10mm
Interface	Micro USB
Express Key	4 Programmable Press Keys
OS Support	Windows 7 or later, mac OS 10.12 or later, Andriod 6.0 or later

Model P62-G

Dimension	149 x Φ 14mm
Weight	12.5g
Pressure Sensitivity	8192 Levels

6. Trouble Shooting

Abnormal Phenomena

Possible Solutions

There is no pressure in the graphics software but the cursor moves

You may have installed other tablet drivers or opened the drawing software when installing the driver. Please uninstall all drivers and close the drawing software, then reinstall the driver. It's better to restart your computer after finishing the installation.

The pen does not work

1. Make sure you are using the pen that originally came with your tablet.
2. Make sure you installed the driver correctly.

Press Keys do not work

1. Make sure the Shortcut Keys function were enabled in the driver.
2. Make sure you have correctly defined the Press Keys.

The computer can't enter sleep mode

When you are not using the tablet, please do not put the pen on the tablet surface, which will keep the computer awake.

The side button of the pen doesn't work

When pressing the side button, please make sure that the nib didn't touch the tablet surface and the distance between the nib and surface is within 10mm.

The computer can't recognize the tablet

Make sure the USB port is functional, if not, please change to another USB port.

For more FAQs, please feel free to check :

<http://support.artisul.com/en/support/home>

7. Contact Us for After-sales Service

If you have any questions, please feel free to contact us at:

 www.artisul.com

 service@artisul.com