

**UC** LOGIC



**ARTISUL**

**D series**

---

## User Manual **for Mac**

**MAC OSX 10.8/10.9/10.10/10.11**

**Driver Version 3.1 later**

Version : V3.1

Release Date : 2016/08

**Apple and Mac OS are either registered trademarks or trademarks of Apple Corporation in United States and/or other countries.**

**Any additional company and product name mentioned in this documentation may be registered trademarks or trademarks.**

**ARTISUL and UC-Logic are registered trademarks of UC-Logic Technology Corp.**

**UC-Logic reserves the right to revise this publication without obligation to provide notification of such changes.**

**Copyright © 2015-2016 UC-Logic Technology Corp. All rights reserved.**

# Contents

I.	General Information .....	4
	OVERVIEW .....	4
	ARTISUL FUNCITONS .....	4
	SYSTEM REQUIREMENTS.....	4
	USAGE TIPS.....	11
	MAPPING TO MULTIPLE MONITORS .....	11
II.	ARTISUL Configuration.....	12
	YOUR ARTISUL SETTING .....	12
	Dashboard .....	13
	Devices .....	14
	HOT KEYS.....	15
	Pen .....	17
	CALIBRATION .....	19
	Support.....	20
	Save & Backup.....	21
	UNINSTALLING THE DRIVER ON MAC SYSTEMS.....	22
III.	Changing the Pen Tip .....	23
	<b>Changing the pen tip</b> .....	23
IV.	Question & Answer .....	24
	<b>How can I get the updated software?</b> .....	24
	<b>My ARTISUL D13 does not work. What can I do?</b> .....	24
V.	How to care for your ARTISUL .....	25
	Appendix 1: Troubles and Solutions.....	26
	Appendix 2: Hot Key comparison table.....	27

## I. General Information

### OVERVIEW

Welcome to the world of **ARTISUL** ! You'll be able to discover how easy it is to control your personal computer by using a **U Pen** instead of a mouse.

The function of the **U Pen** is able to draw a very thin, thick, light, or dark line (called "pressure sensitivity"). You also can write, sign, annotate documents, and draw, sketch or paint as easily as you would on normal paper and simulate the functions like pencil, mark pen, brush, or watercolor pen by using the commercial software packages such as Adobe® Photoshop™, Corel® Painter™ and Paint Shop™.

### ARTISUL FUNCITONS

After installing the device driver, your **ARTISUL** features have the following functions:

- Direct pointing – You can move the cursor to any location by hovering the digital pen tip over your **ARTISUL** screen.
- Three-button mouse commands - Your **ARTISUL** provides all the functions of a three button mouse by using its pen tip and two buttons.
- Pen scrolling – You can scroll documents and Web pages by pressing the middle button of the digital pen over your **ARTISUL D13** screen.
- Pressure sensitivity – This feature allows you to emulate various brushes and pencils so when you press down the pen tip harder, lighter, or stronger, you create pencil lines from very thin to thick.

---

4

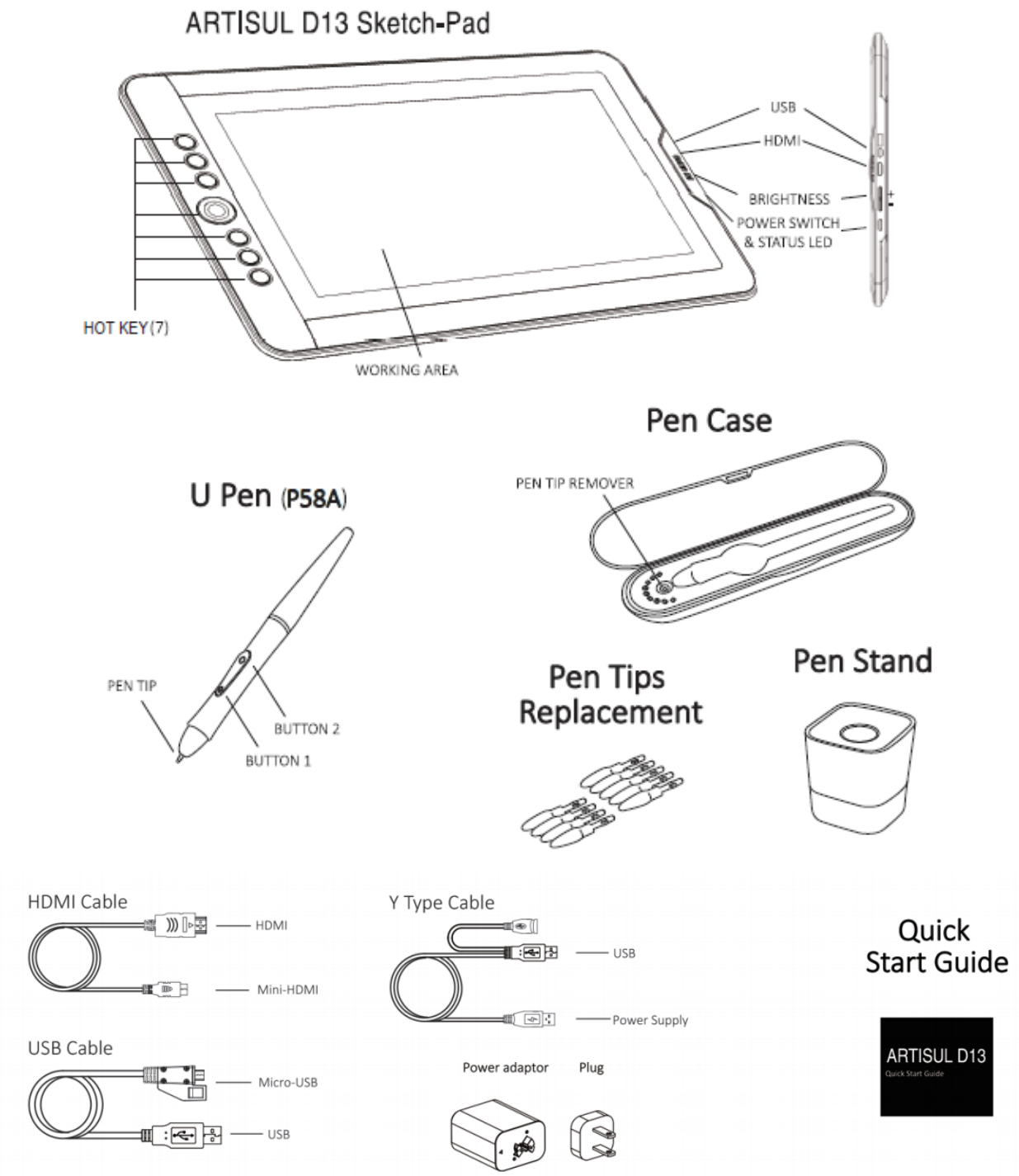
→Note : The U Pen has a sensitive electronic components inside, which can be damaged when dropped. Please remember to store it in the pen case or pen stand when it is not in use.

### SYSTEM REQUIREMENTS

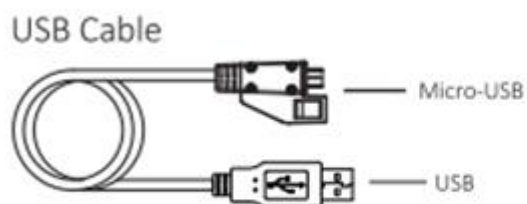
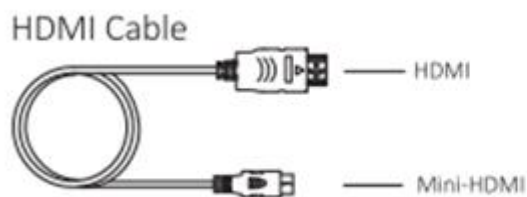
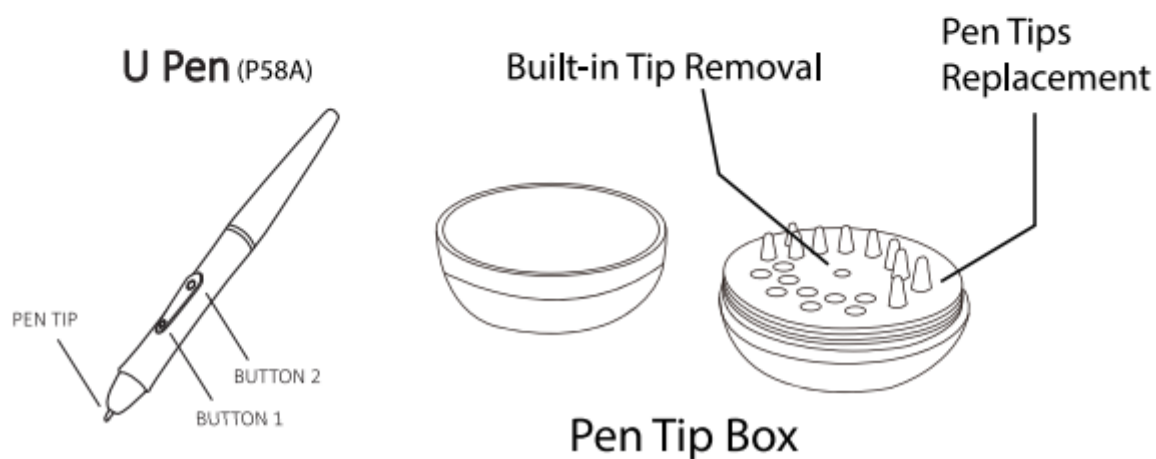
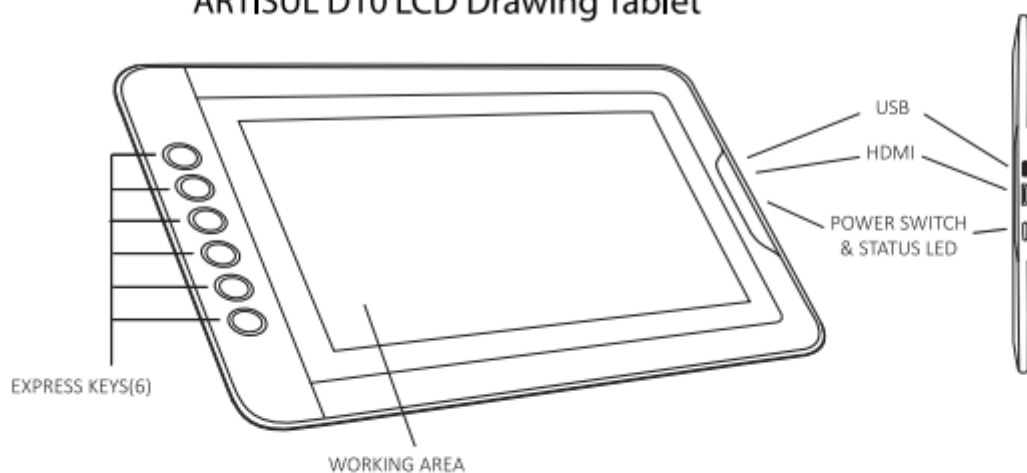
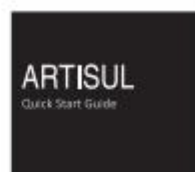
- Mac OSX 10.8 / 10.9 / 10.10/10.11
- USB Port and HDMI port
- Internet connection

## VERIFYING HARDWARE

Your **ARTISUL** and package contents are shown below. If anything is missing, contact your dealer immediately.



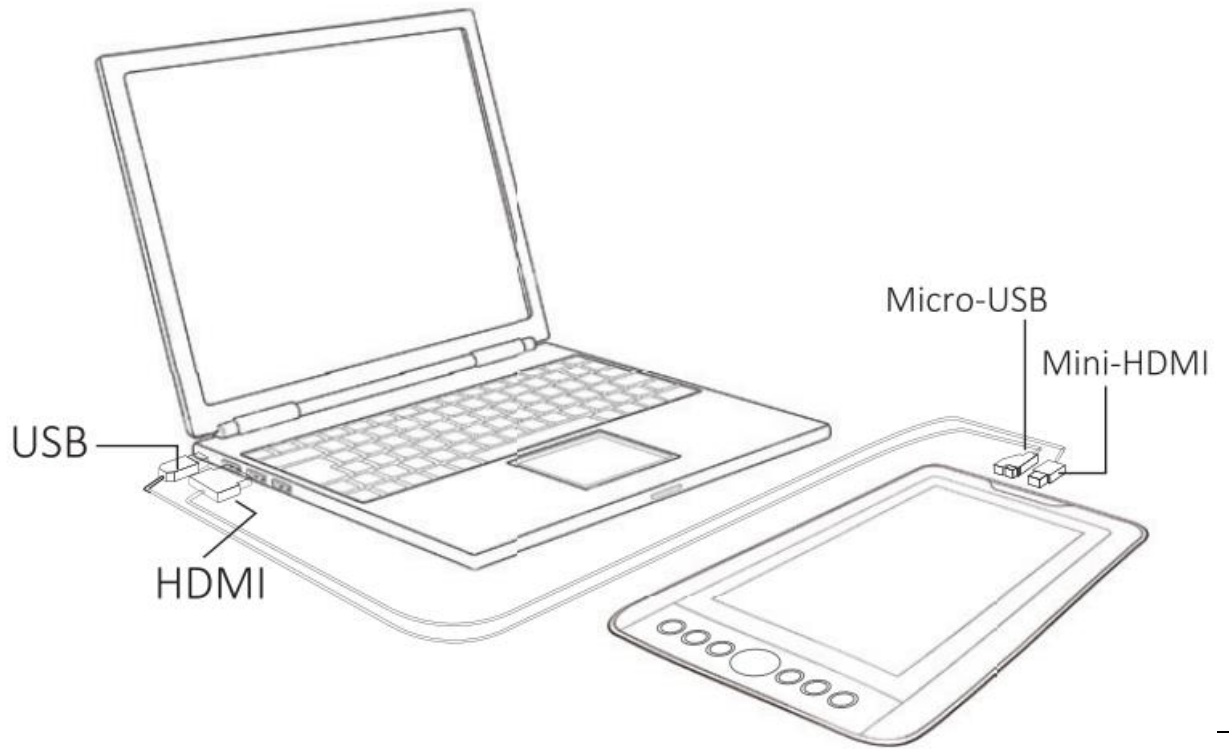
→Note: Use only power adapter and cables approved by UC-LOGIC for use with **ARTISUL D13**.

**D10****Product and Accessories****ARTISUL D10 LCD Drawing Tablet****Quick Start Guide**

## HARDWARE INSTALLATION

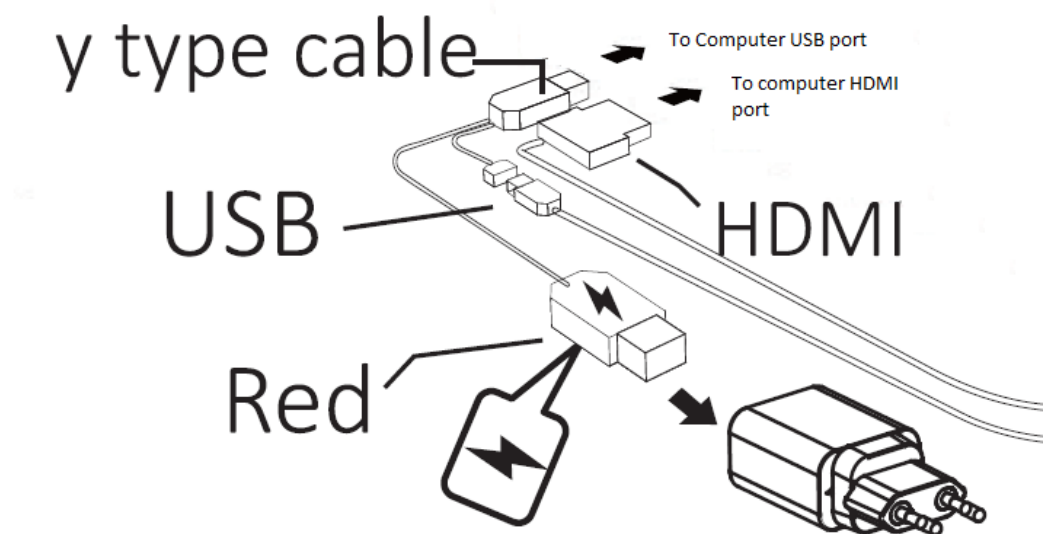
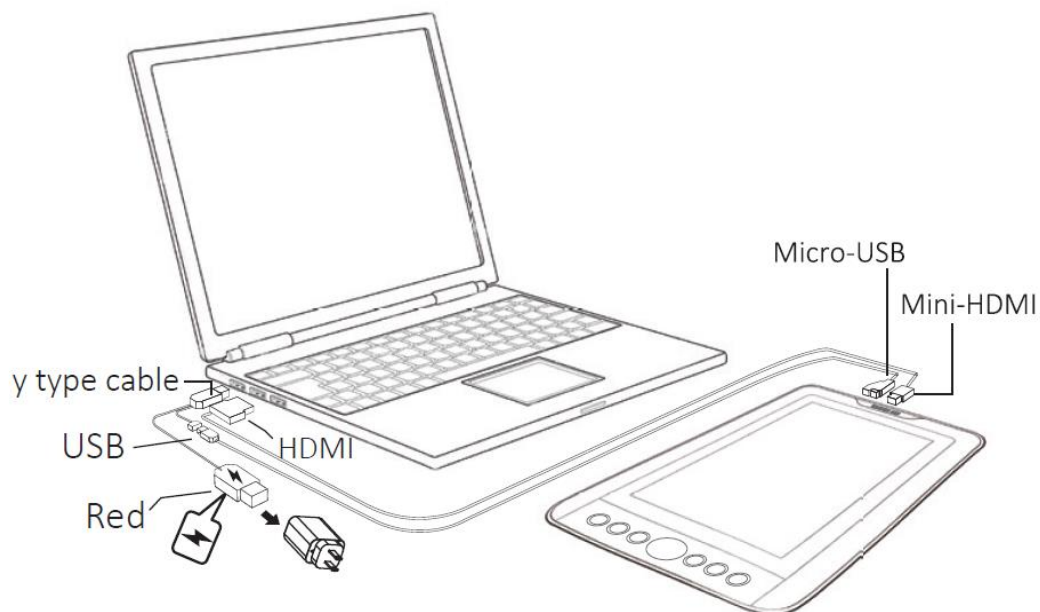
There are two ways to install your hardware:

### 1. Standard install



Connect your **ARTISUL** with a HDMI & USB interface into the computer

## 2. Using external power adapter. (D13 only)



→Note : Please remove power adapter first when you want remove **ARTISUL D13**.

→Note: Use only power adapter and cables approved by UC-LOGIC for use with **ARTISUL**.



## INSTALLING THE DRIVER SOFTWARE IN MAC

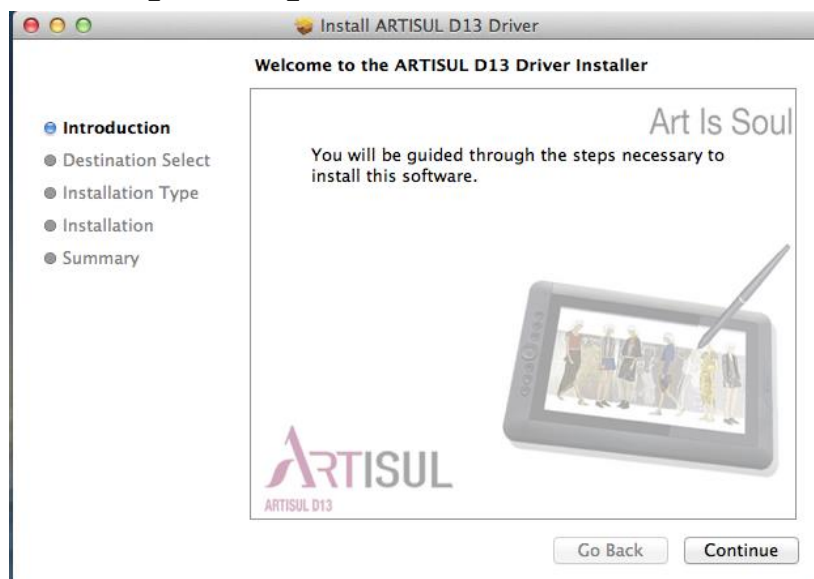
To install the driver, just follow the installation instructions below:

1. Please download the driver from <https://artisul.com/downloads> page.
2. Connect your **ARTISUL** with a HDMI & USB interface into the computer.
3. Decompression the driver file.
4. Select **【Mac OS X】** ► **【ArtisulTabletDriver3XX-XXXXXX-XXX.pkg】** for installation.

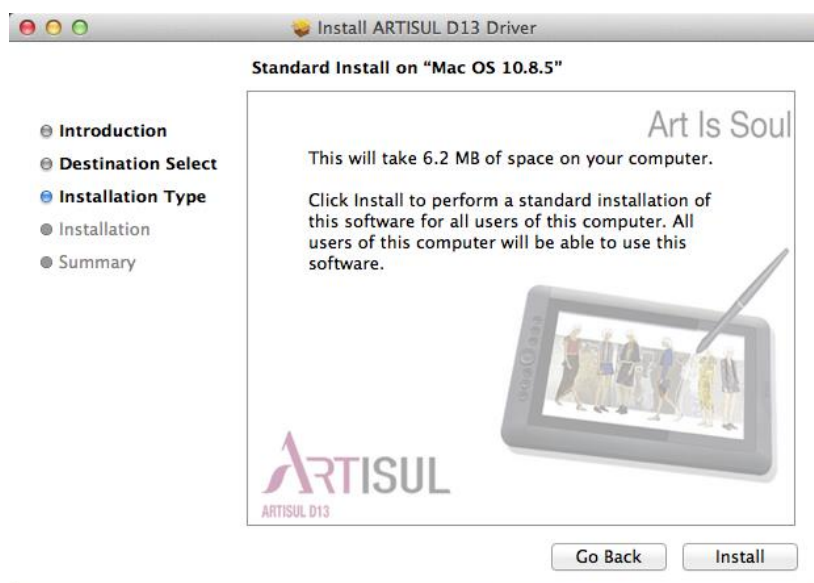


5. Continue to follow the installation instructions on screen.

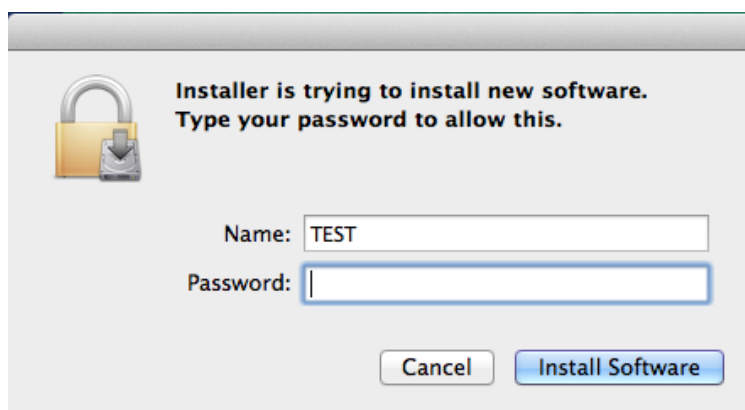
### 3.1 Click **【Continue】**



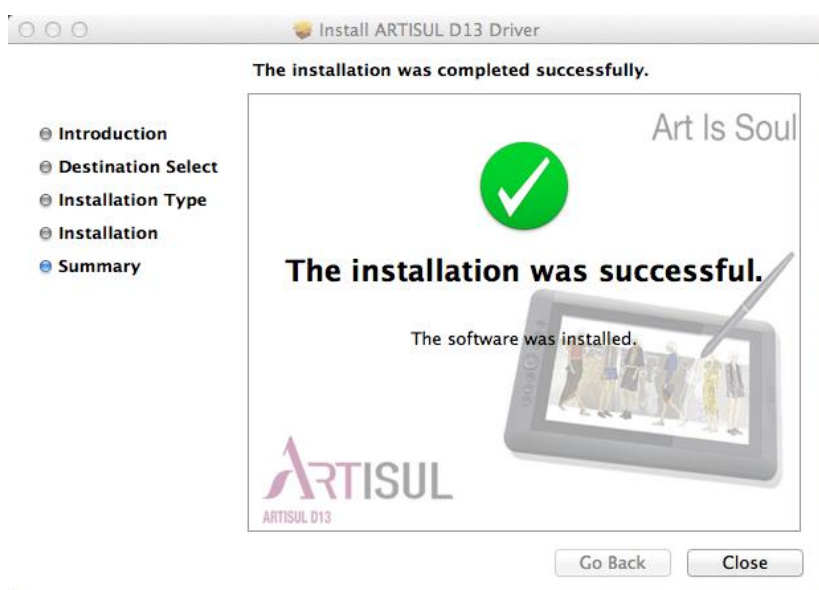
### 3.2 Click **【Install】**



3.3 Enter the user name and password. Click **【Install Software】** .



3.4 Click **【Close】** to complete the installation.



→Note: Please connect your ARTISUL to your computer before opening your creative software.

## USAGE TIPS

### 1. Double tapping

- When you double tap with the digital pen (equivalent to a double click with a mouse), try to keep the pen tip away from the **ARTISUL** screen, or at least try to lift the pen tip as fast as possible before the second tap.

### 2. Using a pen without an ordinary mouse

You may install the **ARTISUL** and a mouse in your computer at the same time. However, only one device is able to work at a time. You cannot use both devices at once.

## MAPPING TO MULTIPLE MONITORS

If your computer is equipped with more than one monitor, the display resolution of your other monitor must be the same resolution as your **ARTISUL** . Otherwise, the pen cursor will be misplaced on the screen. For **ARTISUL D13**, please make sure the other monitor resolution has 1080P (1920 X 1080) .

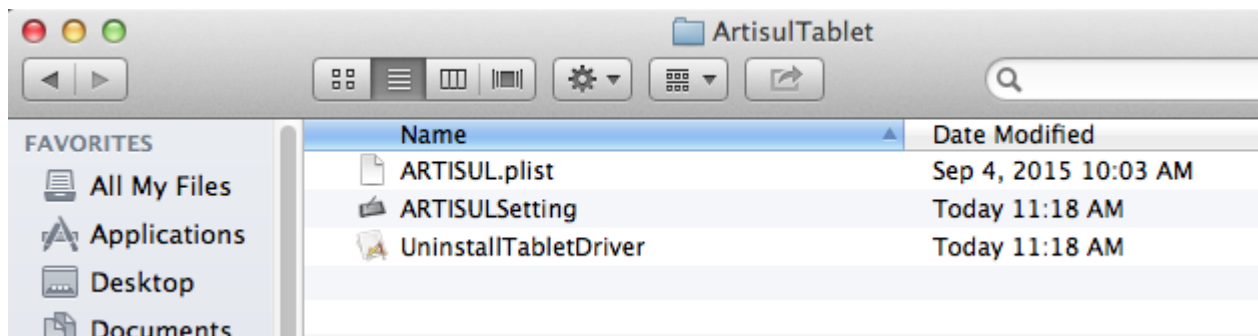
If your other monitor doesn't support 1080P , please don't use mirroring mode.

You can press "Command-F1" to toggling between mirroring and extended desktop modes.

## II. ARTISUL Configuration

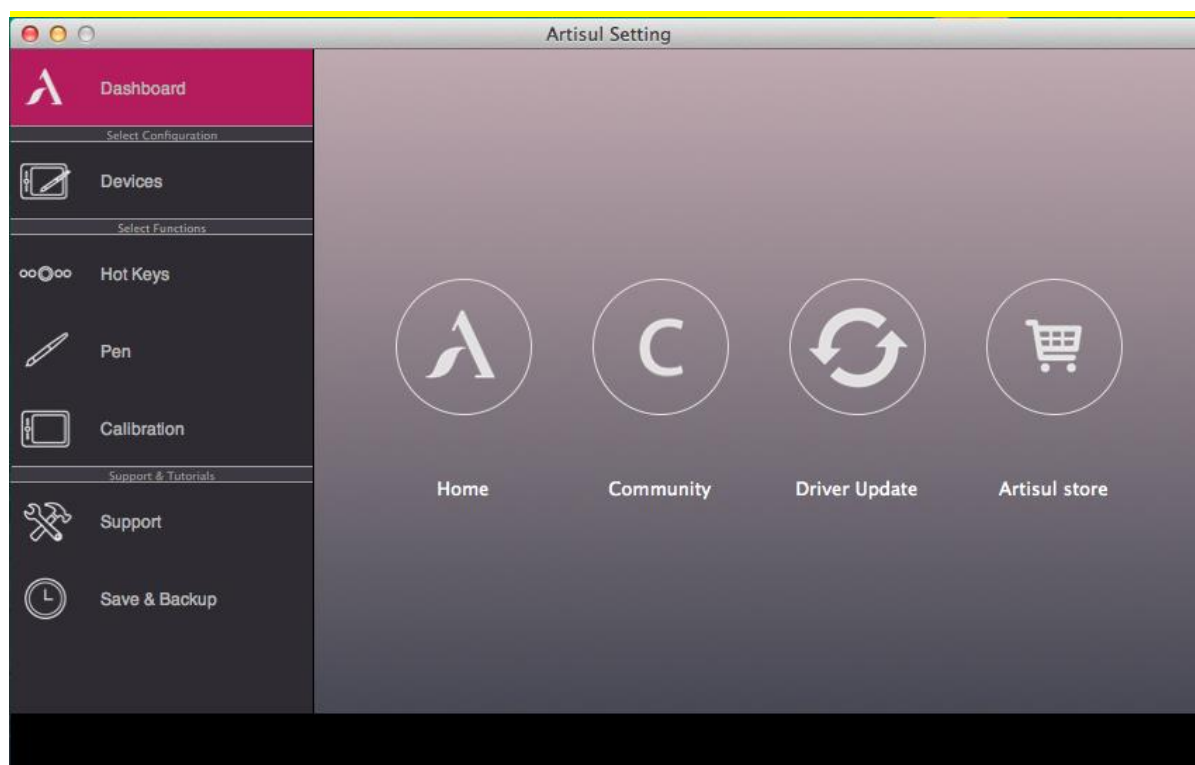
### YOUR ARTISUL SETTING

- 1.1 Click **【GO】** ► **【Applications】**
- 1.2 Click **【ArtisulTablet】** ► **【ArtisulSetting】**



## Dashboard

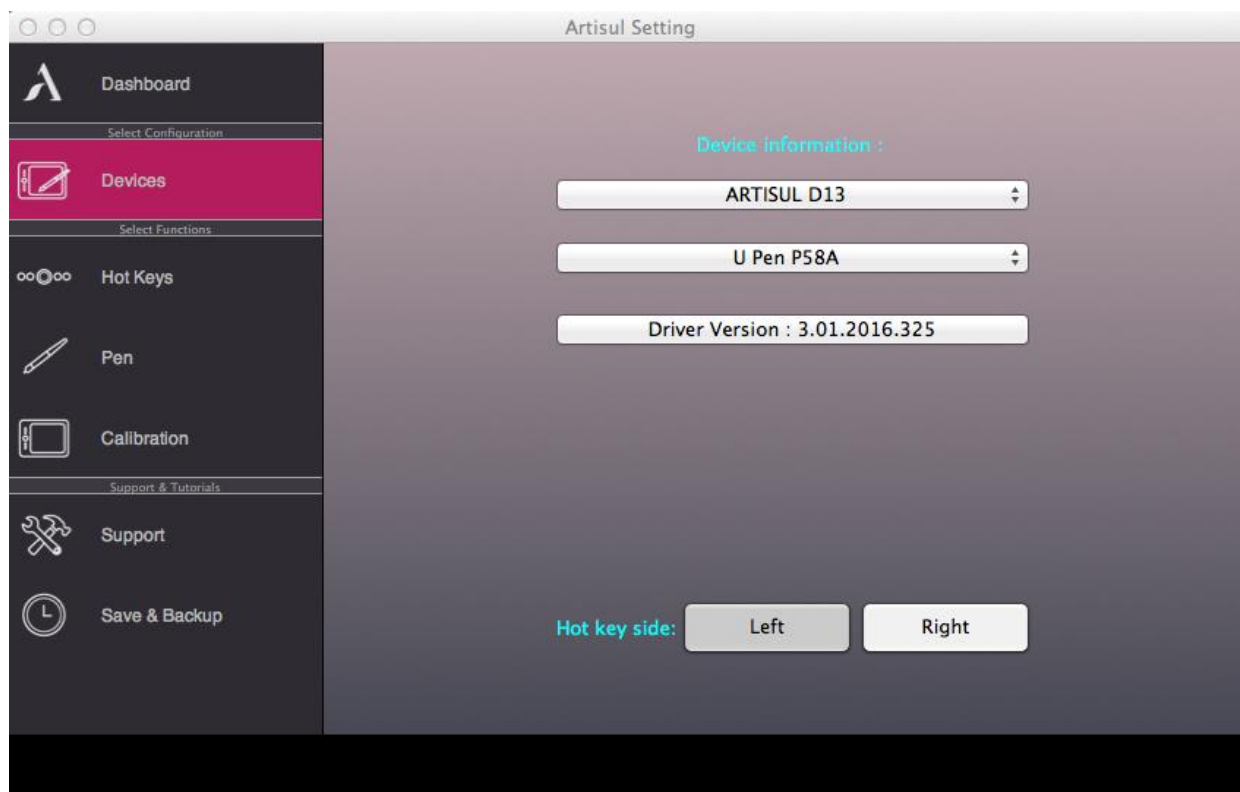
The Dashboard tab can help you connect to ARTISUL website.



You can click the icon to connect to **ARTISUL** website.

## Devices

Devices TAB shows device information and driver version.



14

### ✓ Device Information

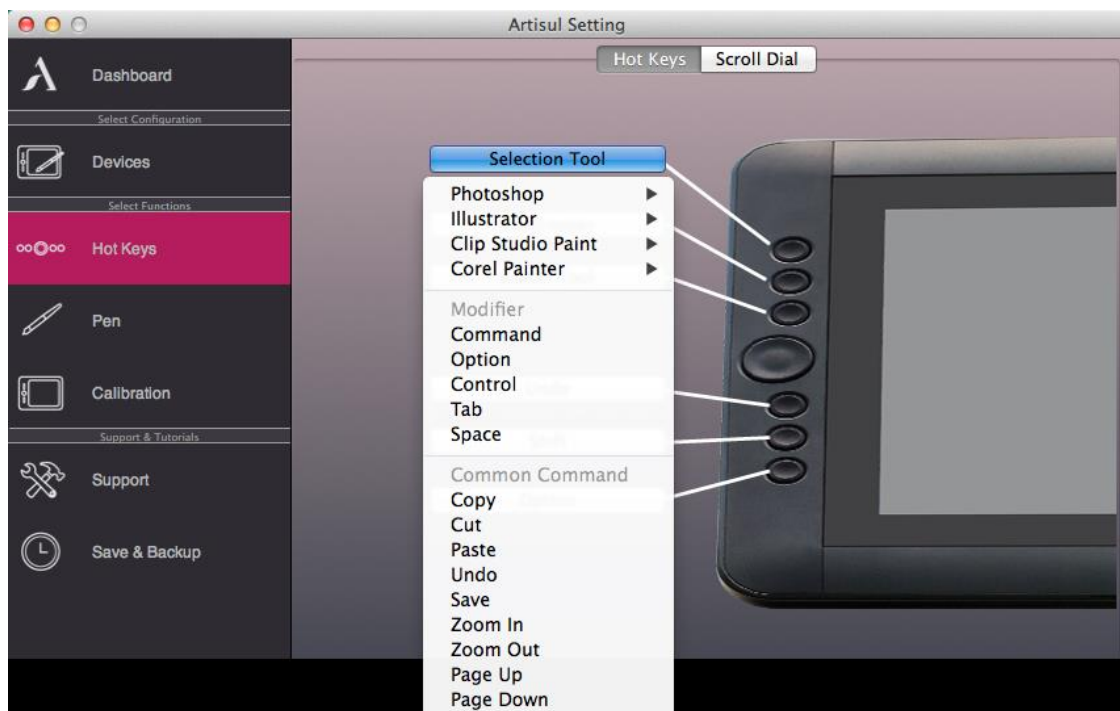
If it don't show anything in Device Information , please check **Artisul** had connected to your computer.

### ✓ Hot key side

You can rotate screen on **Artisul**. You only click the Right button.

## HOT KEYS

You may re-program the Hot Keys and Scroll Dial functions from the Hot Keys configuration page.



### ✓ Redefine Hot keys

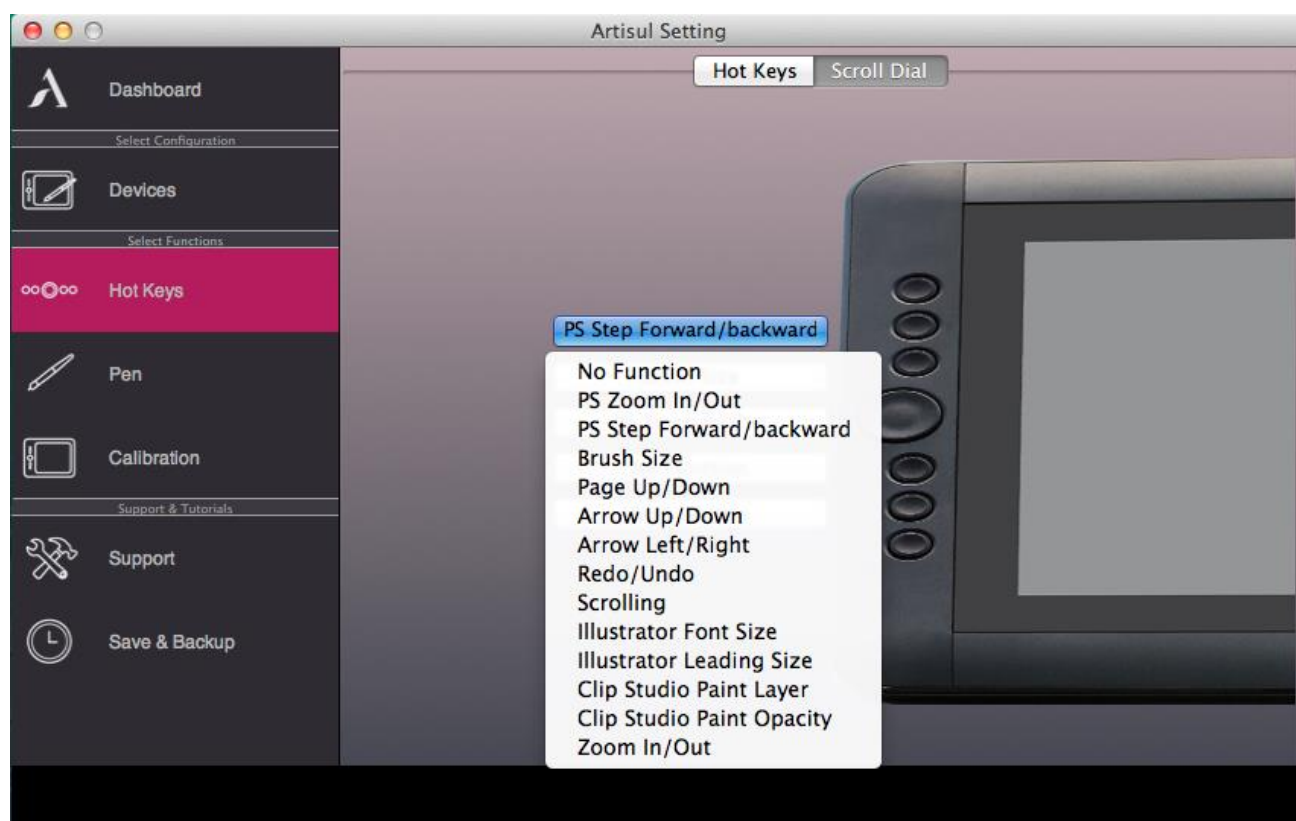
Just click the button and choose from any of the available functions.

→Note : Software keystrokes are based on English input methods. Please make sure your input method is set to English when using Hot Keys on your ARTISUL.

→Note : Most creative software will not accept keystroke input when your U pen is still in use or when your U pen tip is still within the detectable cursor range. To avoid invalid keystroke actions, please allow the pen to cursor to leave the screen of **ARTISUL** before pressing your Hot Keys. (To leave the screen, allow your U pen tip to be at least 1.5" away from the surface of the D13 screen.)

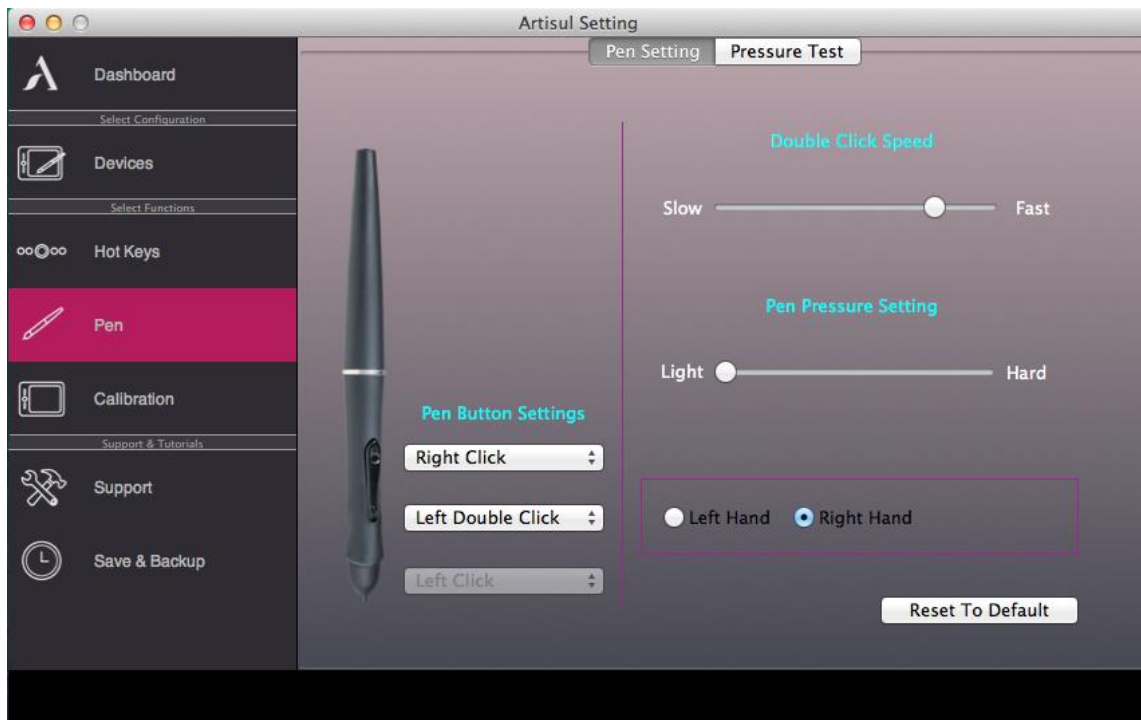
## ✓ Scroll Dial function setting (D13 only)

You can define 5 function in Scroll Dial . Tap on **【Scroll Dial】** button to select the function which you would like to use. You can press the Slide wheel to switch function.





## Pen



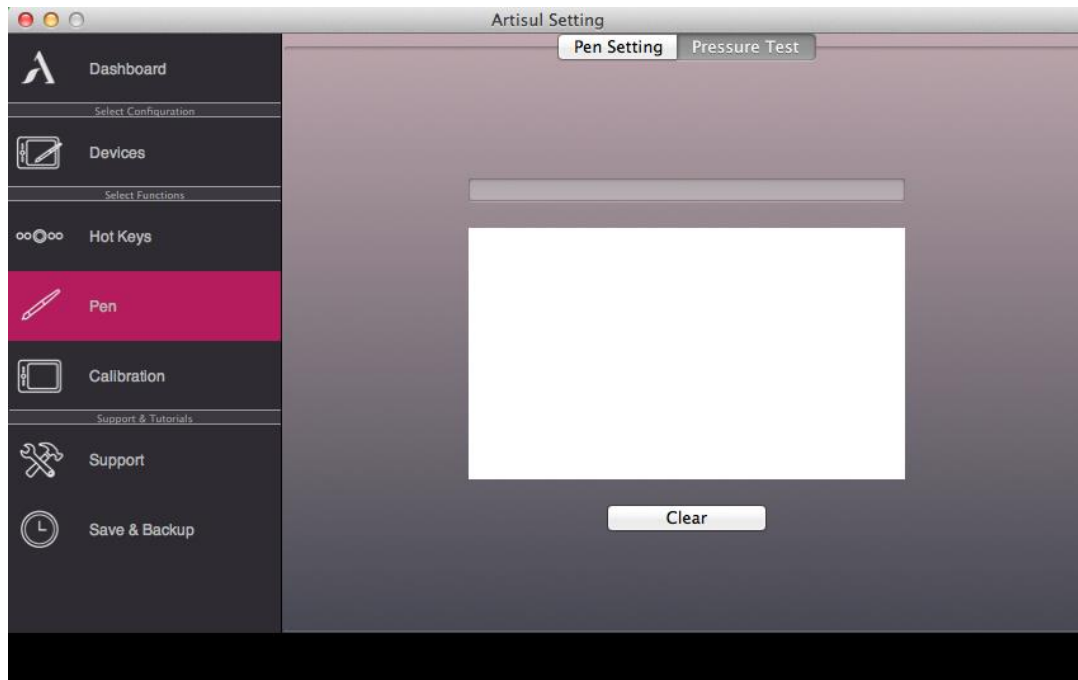
- ✓ **Pen Button Settings:**  
You may re-program the functions of the pen two-barrel buttons by selecting the button name from the drop down menu and assign a command of a traditional three-button mouse to it. According to the mouse function, you can select “No Function”, “Left Click”, “Left Double Click”, “Right Click”, “Middle Click” or “Pen/Eraser/Display Toggle” Toggle.
- ✓ **Double Click Speed:**  
Move the Speed Slider toward “Slow” if you want more time in double tapping with Pen Tip or less time if you move the Speed Slider toward “Fast”.
- ✓ **Pen Pressure Setting:**  
By default setting, tapping with the pen tip is equivalent to a left click of a mouse. Move the slider in the sensitivity bar to adjust the pressure response of the pen tip. Light means your **ARTISUL** Tablet will recognize the slightest nuance of pressure while heavy will take more pressure before the digital ink or pen click will be recognized. The pressure test is also there for you to test out the differences between light and heavy pen pressure settings. We recommend for you to take some time to set up your own preferred pen settings.

✓ **Left Hand / Right Hand**

Select to left-handed or right-handed users at any time.

✓ **Reset To Default**

Return all of the Pen settings. Tap on the **【Reset To Default】**

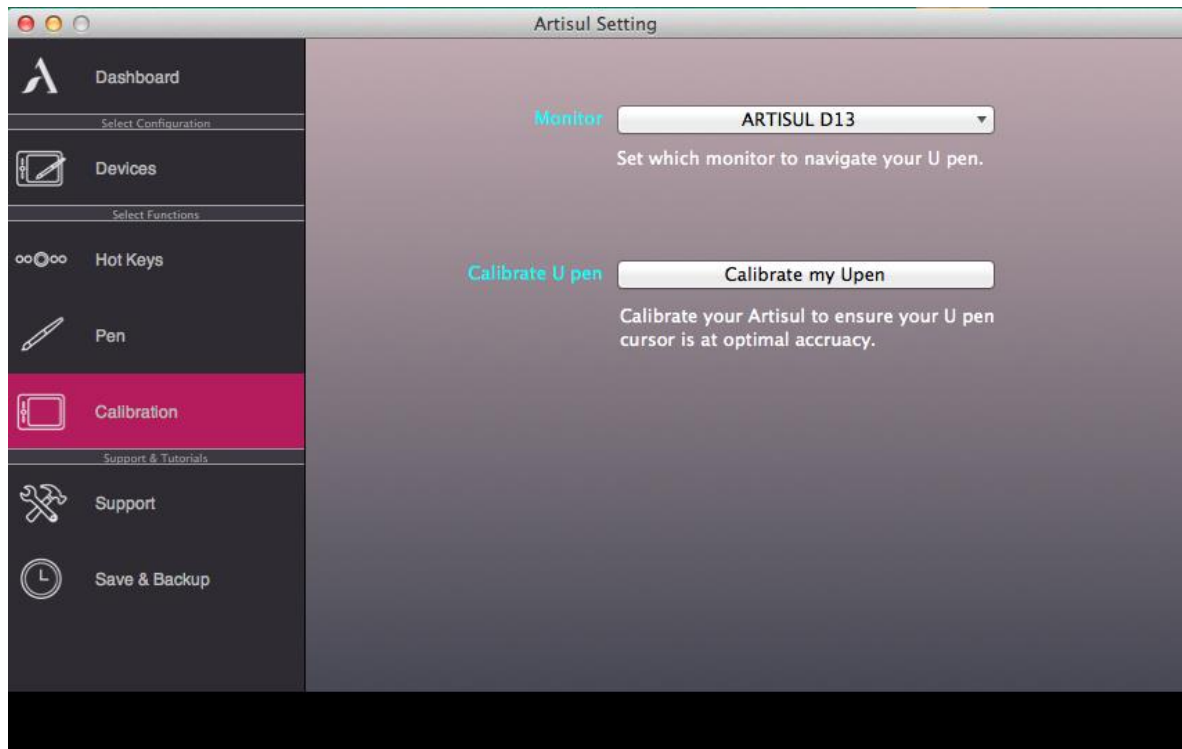


✓ **Pressure Test**

There are four different colors for selecting the pressure sensitivity of **ARTISUL**, and they can be adjusted in this tab. There is a test area to see the thickness of a line by pressing down on the pen tip to the pad.

**Clear:** Tap on the **【Clear】** button to clean the space up in the Pressure Test area.

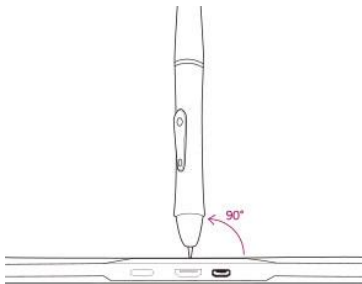
## CALIBRATION



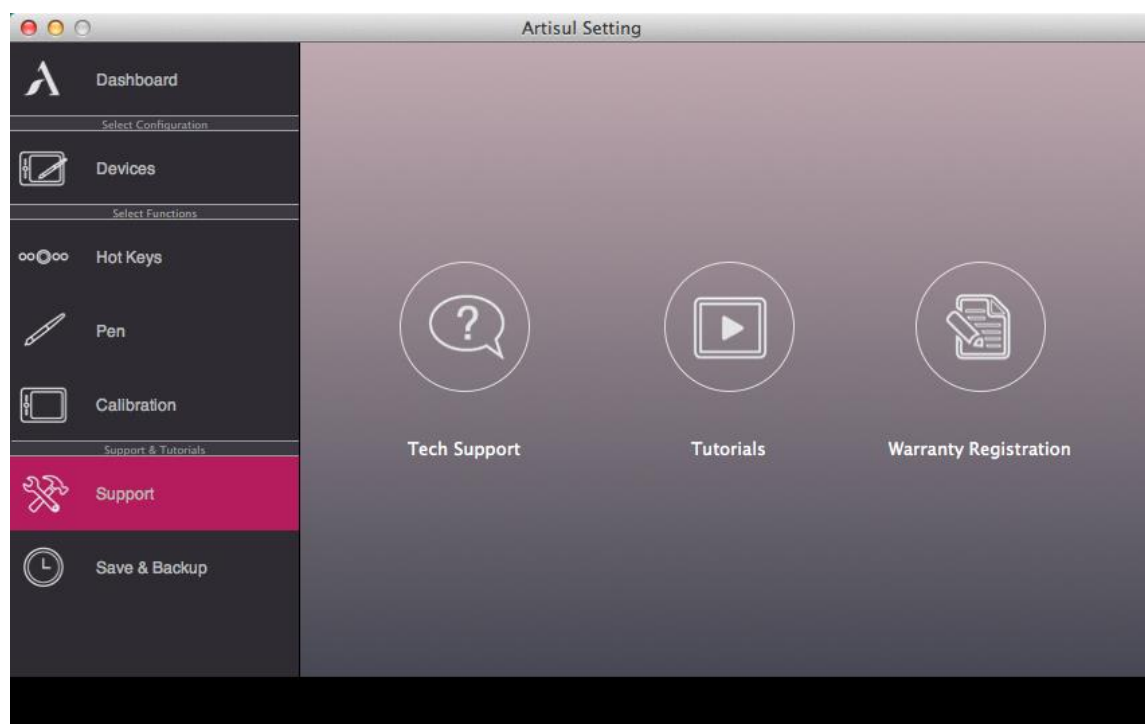
**Calibration:** Click “Calibration my Upen” to activate the calibration screen.

19

→ Caution: Hold the pen 90 ° vertically on the calibration screen and use the pen tip to click on the center of the crosshairs in the calibration dialogue.



## Support



### ✓ Tech Support

The Tech Support button can help you connect to **ARTISUL** support page.

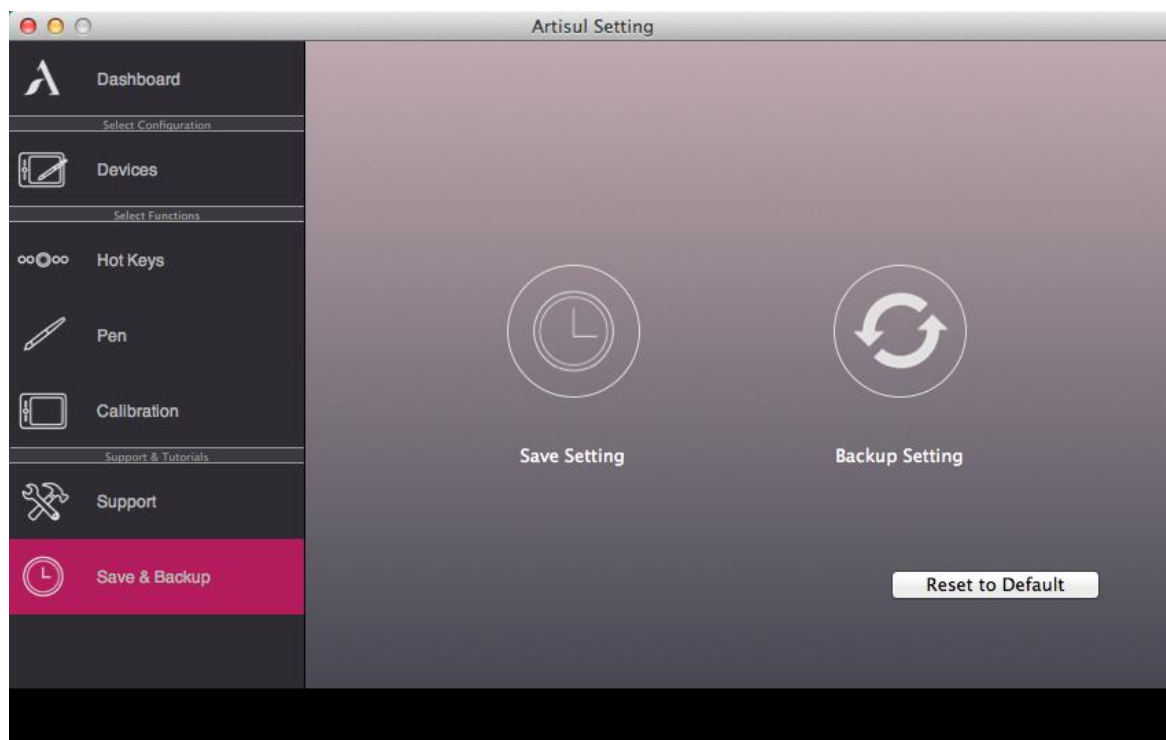
### ✓ Tutorial

The Tutorial button can help you connect to tutorial video page.

### ✓ Warranty Registration

The Warranty Registration button can help you connect to product registration website .

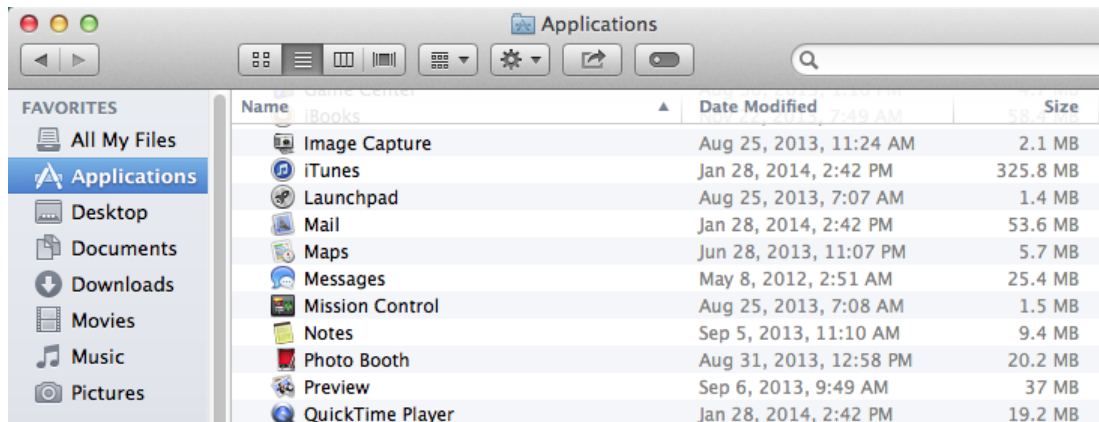
## Save & Backup



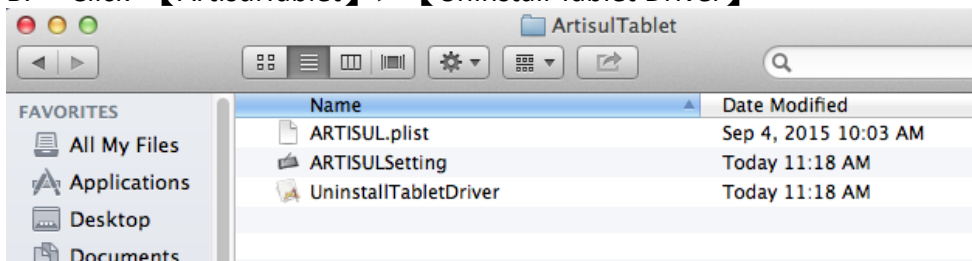
- ✓ **Save your Preferences:**  
Save your Hot keys setting.
- ✓ **Restore your Preferences:**  
Restore your Hot keys setting.
- ✓ **Reset To Default**  
Reset all of the **Artisul** settings. Tap on the **【Reset To Default】**

## UNINSTALLING THE DRIVER ON MAC SYSTEMS

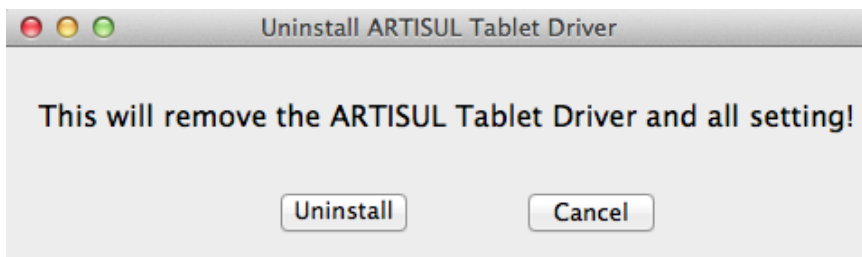
- A. Click **【GO】** ► **【Applications】**



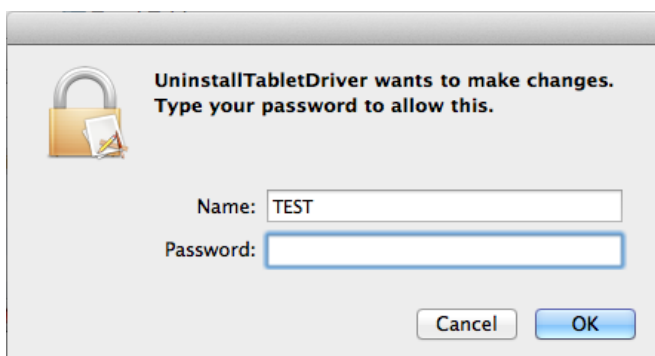
- B. Click **【ArtisulTablet】** ► **【Uninstall Tablet Driver】**



- C. Click **【UninstallTabletDriver】**



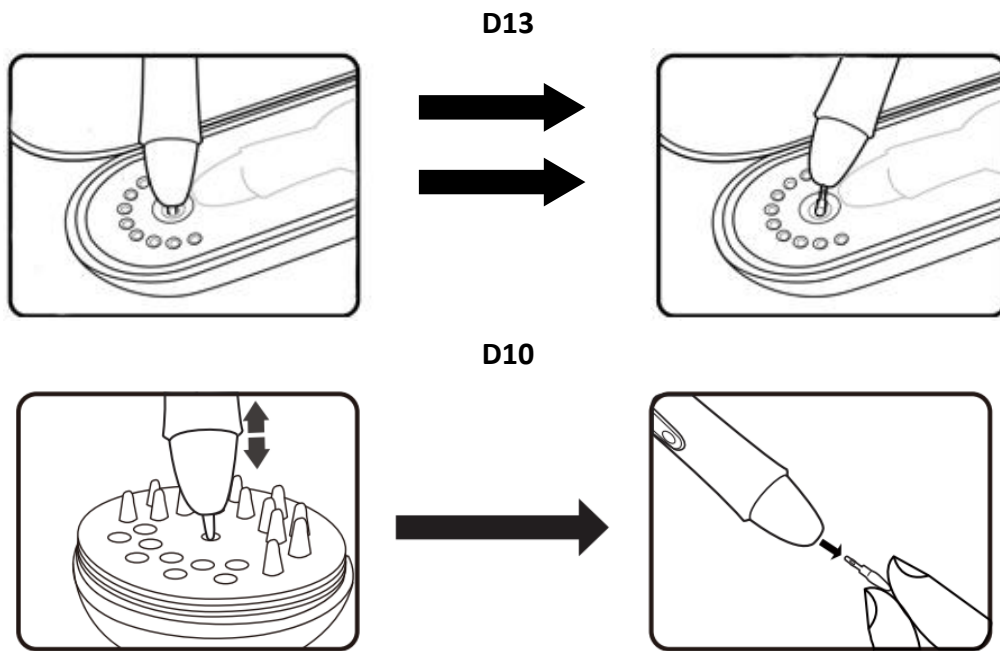
- D. You can enter the user name and password and click **【OK】** to complete the uninstall process.



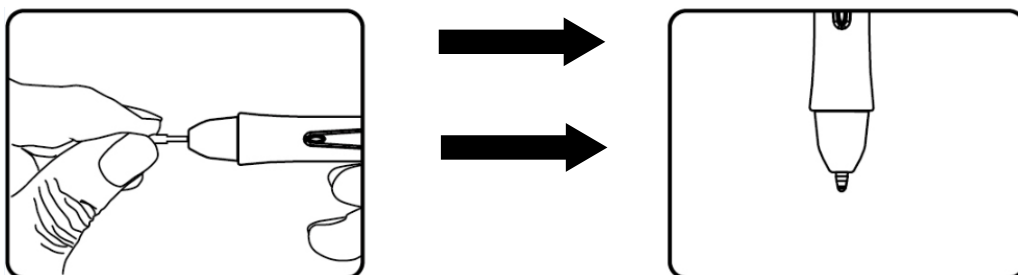
### III. Changing the Pen Tip

#### ◆ Changing the pen tip

- A. Pull out the pen tip from **U Pen** by using the tip remover device built into the pen case.



- B. Push the pen tip into the digital pen



## IV. Question & Answer

### ◆ How can I get the updated software?

*You can download the new driver from our website (<http://ARTISUL.com/>).*

- A. Uninstall your old driver and refer to the section “UNINSTALLING THE DRIVER ON MAC SYSTEM”.
- B. Download the latest version of driver from our official website and save it into your hard disk.

### ◆ My **ARTISUL D13** does not work. What can I do?

*Follow these steps as shown below:*

- A. Remove the USB and HDMI plug from the computer and your **ARTISUL**.
- B. Re-connect the USB and HDMI plug to the computer and your **ARTISUL**.
- C. If this does not work, we suggest you remove the **ARTISUL** driver from the system and re-install it.

*If you do not have pen pressure, it means the pen might be faulty so we suggest you contact us for assistance.*

*Please check our support forum or submit a support ticket for any technical support*

*<https://artisul.com/support-forum/>*

*<https://artisul.com/submit-support-ticket/>*



## V. How to care for your ARTISUL

- ✓ Keep the U Pen and the **ARTISUL** LCD screen surface clean. Dust and dirt particles can stick to the pen and cause excessive wear to the screen surface. °
- ✓ Wipe the LCD screen gently with a soft cloth.
- ✓ Stubborn stains may be removed with a cloth slightly moistened with a solution of mild soap and warm water.

### →Note:

1. Unplug the **ARTISUL** cable before you begin cleaning your **ARTISUL**.
2. Never spray water or detergent directly in **ARTISUL**. It may cause damage to **ARTISUL**.
3. Never use strong solvent such as a thinner or alcohol for cleaning.
4. Never reverse or compress the **ARTISUL** HDMI cables and don't bend it over 90°. It may cause damage to the cables.

## Appendix 1: Troubles and Solutions

No display and the status LED doesn't light.

- Verify the cable is connected between **ARTISUL** and computer.
- Verify that AC power cable is connected , and the **ARTISUL** is turned on.

No display , the status LED does light.

- Your computer may be in power management mode. Please try move the mouse, or depress any key on your keyboard.
- Verify the HDMI cable is connected between **ARTISUL** and computer.
- Verify the display setting on your system. Maybe it just display on other screen.

The color white does not display as white.

- Check the color profile setting that you are using with **ARTISUL** .
- Verify the HDMI cable and port are fully connected.

The pen does not work.

- Verify the cable is connected between **ARTISUL** and computer.
- Verify does other tablet driver in your computer .Please reinstall it and reboot computer.
- Be sure you are using only the pen that came with your product, or a accessory pen specified for use with **ARTISUL**. Other pens may not function properly on **ARTISUL**.
- Please try uninstall **ARTISUL** driver and install it again.

No pen pressure.

- Verify the application supports pen pressure.
- Check pen pressure of application was turn on.
- Please try uninstall **ARTISUL** driver and install it again.
- Some applications need to adjust pen pressure. You can try adjust setting of pen pressure.
- Try reboot your computer ◦

Cursor has offset in application.

- Please update application.
- Some applications need to change setting of tablet. Please try different setting on your application.

## Appendix 2: Hot Key comparison table

Hot key	Keyboard Shortcuts
Copy	Cmd + C
Cut	Cmd + X
Paste	Cmd + V
Undo	Cmd + Z
Switch between open apps	Cmd+ Tab
Save	Cmd + S
Zoom In	Cmd +
Zoom Out	Cmd -
Page Up	Fn + Up Arrow
Page Down	Fn - Down Arrow

Photoshop Tools	
Hot key	Keyboard Shortcuts
Lasso	L
Magic Wand	W
Eyedropper	I
Crop	C
Healing Brush	J
Brush	B
Clone Stamp	S
Eraser	E
Type	T
Hand	H
Toggle Screen Modes	F
Move Tool	V
Selection Tool	A
Scroll with Hand Tool	Spacebar + drag

Photoshop Tools	
Hot key	Keyboard Shortcuts
Image Size	Cmd + Opt + i
Fit on Screen	Cmd + 0
Actual Pixels	Cmd + Opt + 0
Zoom In	Cmd +
Zoom Out	Cmd -
Undo/Redo	Cmd + Z
Stepforward	Shift + Cmd + z
Stepbackward	Opt + Cmd + z
Cut	Cmd + x
Copy	Cmd + c
Paste	Cmd + v
Free Transform	Cmd + T
Copy Merged Layers	Cmd + Shift + C
New Layer	Shift + Cmd + N
Layer Via Copy	Cmd + J
Merge Layers	Cmd + E
Group Layers	Cmd + G
Create/Release Clipping Mask	Opt + Cmd + G
Go to Previous Layer	Opt + [
Go to Next Layer	Opt + ]
Deselect	Cmd + D
Inverse (Selection)	Shift + Cmd + I
Select All Layers	Opt + Cmd + A
Switch brush back/forth from precise mode	Capslock
Fill foreground color	Opt + Backspace
Fill background color	Cmd + Backspace
Hide/Show Palettes	Tab
Flatten Layers and Keep (combine all visible layer into one)	Cmd + Opt + Shift + E
Decrease Brush Size	[
Increase Brush Size	]
Decrease Brush Softness	Shift + [
Increase Brush Softness	Shift + ]
Cycle Through Images or Curve Adjustments	Cmd + Tab

Illustrator Tools	
Hot key	Keyboard Shortcuts
Group	Cmd + g
Ungroup	Cmd + Shift + g
Select All	Cmd + A
Lock Selection	Cmd + 2
Select Artwork in Action Board	Cmd + Opt + A
Deselect All	Shift + Cmd + A
Lock all Deselected Artwork	Cmd + Opt + Shift + 2
Unlock all Artwork	Cmd + Opt+ 2
Undo	Cmd + Z
Paste in front	Cmd + F
Send to Front	Cmd + Shift + ]
Send to Back	Cmd + Shift + [
Copy and Drag (hor/vert)	Opt + Shift + Drag
Increase Font Size	Cmd + Shift + >
Decrease Font Size	Cmd + Shift + <
Flush Left	Cmd + Shift + L
Flush Right	Cmd + Shift + R
Center	Cmd + Shift + C
Increase Leading Size	Cmd + Shift + up
Decrease Leading Size	Cmd + shift + down
Smart Guides	Cmd + U
Actual Size	Shift + Cmd + 0
Fit in Window	Cmd + 0
Save As	Cmd + Shift + s
Save for Web	Cmd + Shift + Opt + s

Illustrator Tools	
Hot key	Keyboard Shortcuts
Selection	V
Direct Selection	A
Magic Wand	Y
Pen	P
Lasso	Q
Type	T
Paintbrush	B
Pencil	M
Eraser	Shift + E
Eyedropper	I
Rotate	R
Free Transform	E
Toggle Screen Mode	F
Hand Tool	Spacebar

Clip Studio Paint Tools	
Hot key	Keyboard Shortcuts
Select All	Cmd + a
Clear outside of selected area	Shift + backspace
Clear Selection	Cmd + d
Undo	Cmd + z
Redo	Cmd + shift + z
Cut	Cmd + x
Copy	Cmd + c
Paste	Cmd + v
New Raster Layer	Cmd + shift + n
Combine to layer below	Cmd + e
Combine selected layer	Shift + Opt + e
Combine showing layer	Cmd + Shift + e
Switch selected layer (above)	Opt + ]
Switch selected layer (below)	Opt + [
Invert selected layer	Cmd + Shift + I
Hue/Saturation Luminosity	Cmd + U
Reduce Opacity	Cmd + [
Increase Opacity	Cmd + ]
Zoom in	Cmd +
Zoom out	Cmd -
Ruler	Cmd + r
Fit to Screen	Cmd + 0
Pixel Size	Cmd + Shift + 0
Snap to Ruler	Cmd + 1

Clip Studio Paint Tools	
Hot key	Keyboard Shortcuts
Eraser	E
Brush	B
Pen	P
Fill	Cmd + backspace
Free Transform	Cmd + Shift + t
Scale up or down / Rotate	Cmd + t
Text	T
Color Picker	Opt
Move Image	Cmd
Rotate	R
Move Canvas	Spacebar
Switch Main/Sub Colors	X
Switch drawing and transparent colors	C
Clip at layer below	Cmd + Opt + g



Corel Painter	
Hot key	Keyboard Shortcuts
Undo	Cmd + z
Redo	Cmd + y
Copy	Cmd + c
Paste (as new object)	Cmd + v
Copy Visible	Cmd + Shift + c
Send to front	Shift + pageup
Send to back	Shift + pagedown
Send forward one	Cmd + pageup
Send backward one	Cmd + pagedown
Duplicate	Cmd + d
New Layer	Cmd + shift + n
Group	Cmd + g
Ungroup	Cmd + u
Select All	Cmd + a
Paste into Selection	Cmd + Shift + v
Select all layers	Cmd + Shift + 1
Copy Selection	Cmd + up
Copy merged	Shift + Cmd + C
Invert	Cmd + I
Zoom in	Cmd +
Zoom out	Cmd -
Rulers	Cmd + Shift + r
Fit in Window	f4
Save	Cmd + s
Export Source Image	Shift + Cmd + S

Corel Painter	
Hot key	Keyboard Shortcuts
Brush	B
Dropper (sample color)	d
Fill	Cmd + f
Rotate Canvas	e
Rotate	Spacebar + Opt + drag
Magic Wand	w
Text Tool	t
Pan	spacebar + drag
Layer Adjuster	F
Lasso	L
Use Last Used Filter	Cmd + /
Screen toggle mode	Cmd + M
Free Transform	Cmd + Opt + t
Resize Canvas	Shift + Cmd + R
Center	Spacebar + click
Combine Objects Together	Cmd + Opt + down
Decrease Brush Size	[
Increase Brush Size	]