

ARTISUL D22

User Manual for Windows



Windows 7 or later
Driver Version 3.62 and later

Microsoft and Windows are either registered trademarks or trademarks of Microsoft Corporation in the United States and/or other countries.

Any additional company and product names mentioned in this document may be registered trademarks or trademarks.

ARTISUL and UC-Logic are registered trademarks of UC-Logic Technology Corp.

UC-Logic reserves the right to revise this publication without obligation to provide notification of such changes.

Copyright© 2016-2018 UC-Logic Technology Corp. All rights reserved.

CONTENTS

I. General Information	3
• Overview	3
• ARTISUL Functions	3
• System Requirements	3
• Verifying Hardware	4
• Setup	6
• Installation on Windows	7
• Usage Tips	8
• Mapping to Multiple Monitors	9
II. ARTISUL Driver Configuration	11
• Dashboard	12
• Devices	12
• Hot Keys	13
• Scroll Dial	14
• Pen	14
• Calibration	16
• Support	17
• Save & Backup	18
III. Setting up Pen and Changing the Pen Tip	19
IV. How to Care for your ARTISUL	20
V. Settings for graphic applications	20
VI. Frequently Asked Questions	22

APPENDIX

Appendix 1: On-Screen Display (OSD) Control	23
Appendix 2: Troubleshooting & Solutions	25
Appendix 3: Uninstalling the ARTISUL Driver	26
Appendix 4: Hot Key Comparison Table	27

I. General Information

OVERVIEW

Welcome to the ARTISUL Family! Discover how simple and innovative it is to control your computer using our Pen and LCD Pen Display in place of your mouse or track pad.

The Gaudi Pen functions very similar to an art pen, being able to draw a line very thin or thick, light or dark. This is also known as *pressure sensitivity*. You can write, sign, annotate documents, draw, sketch, or paint as easily as you would on normal paper. Simulate the functions of a pencil, mark pen, brush, or watercolor pen by using graphics apps and software such as Adobe® Photoshop™, Corel® Painter™, Clip Studio Paint™, Paint Tool SAI, Toon Boom, and more!

ARTISUL FUNCTIONS

After installing the device driver, your ARTISUL Pen Display has the following functions:

- *Direct Pointing* – You can move the cursor to any location by hovering the Pen tip over your ARTISUL display.
- *Three-button Mouse Commands* - Your ARTISUL Pen Display provides all the functions of a three-button mouse by using its pen tip and two buttons.
- *QuickDial* – You can scroll through documents and Web pages by pressing the middle button of the QuickDial over your ARTISUL display.
- *Pressure sensitivity* – This feature allows you to emulate various brushes and pencils by pressing the Pen down on the ARTISUL display.

CAUTION: The Gaudi Pen have sensitive electronic components inside, which can be damaged when dropped or mishandled. Store the Gaudi Pen in a safe and secure place when not in use.

SYSTEM REQUIREMENTS

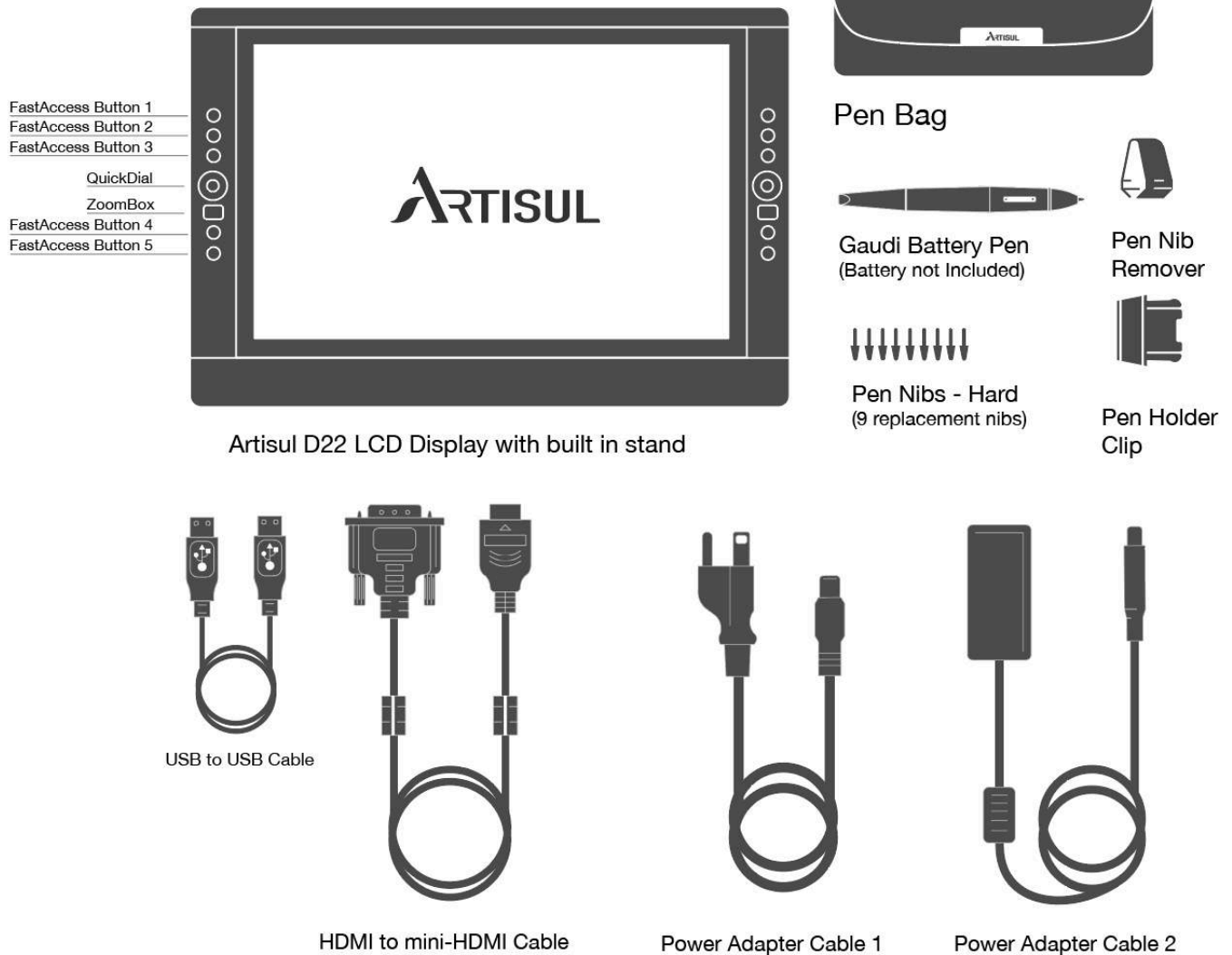
Windows 7/8/8.1/10
USB port and HDMI port

Driver Installation Requirements
Internet connection

VERIFYING HARDWARE

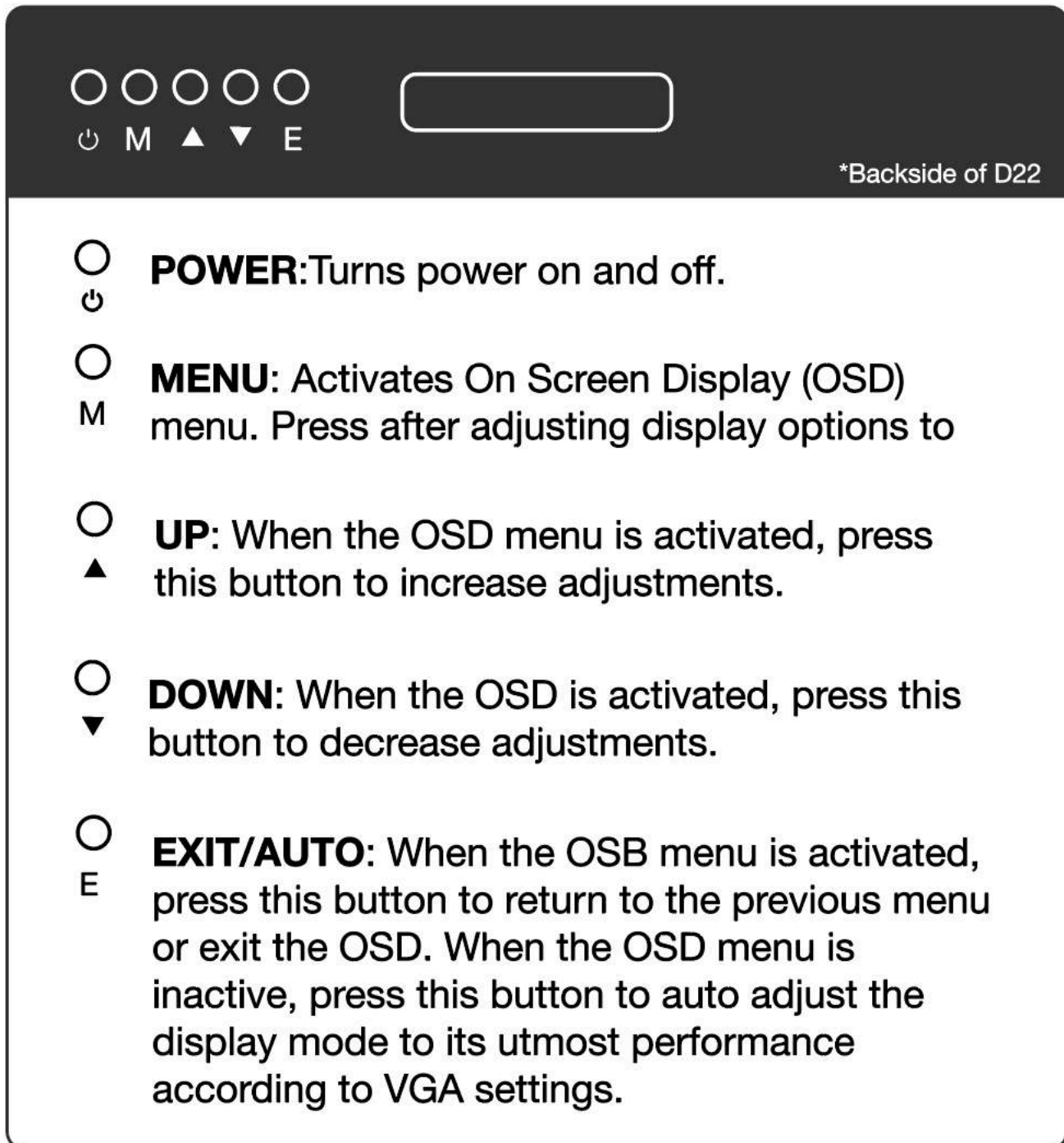
Your ARTISUL Pen Display and its packaged contents are shown below. If anything is missing, contact your dealer immediately.

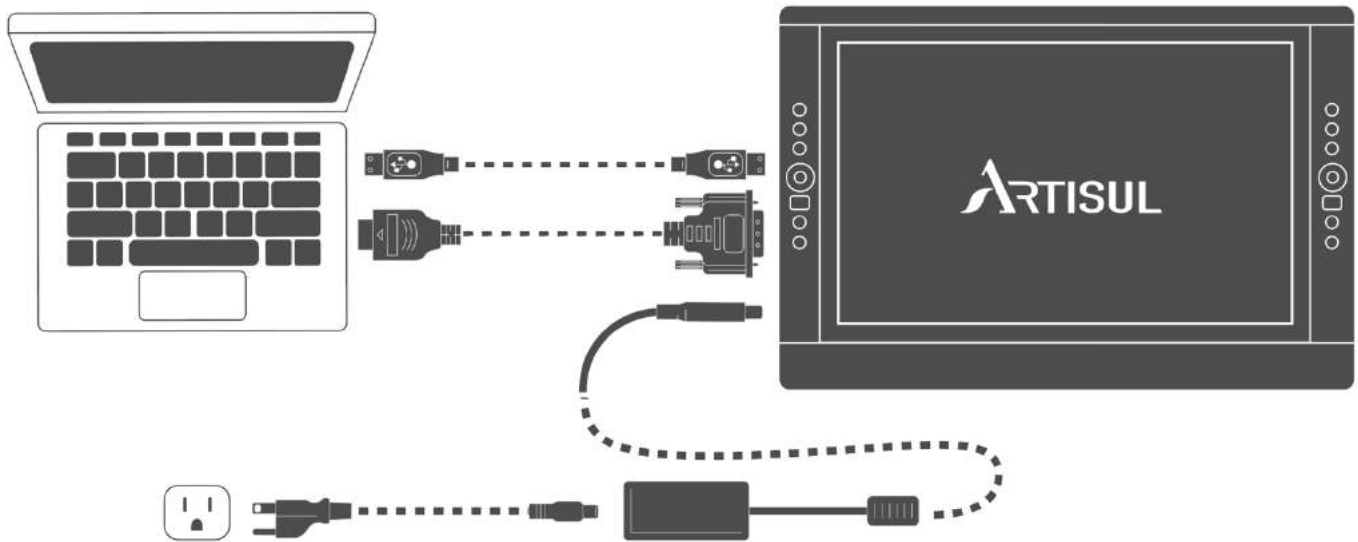
D22



External Buttons

Located on the backside of the D22 are 5 external display buttons.



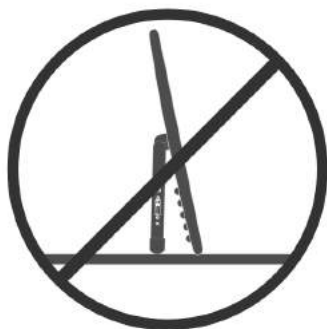
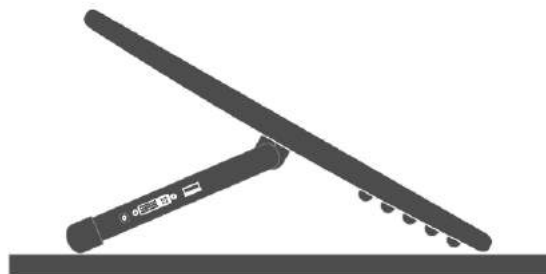
SETUP

Note: Please remove power adapter first when removing your ARTISUL D22 from your computer.

Note: Use only power adapters and cables approved by UC-LOGIC for use with ARTISUL.

Stand Setup

Before using, always securely place and test your Artisul D22 on a stable desk or table, as show below. After every usage, place the D22 back in this position.

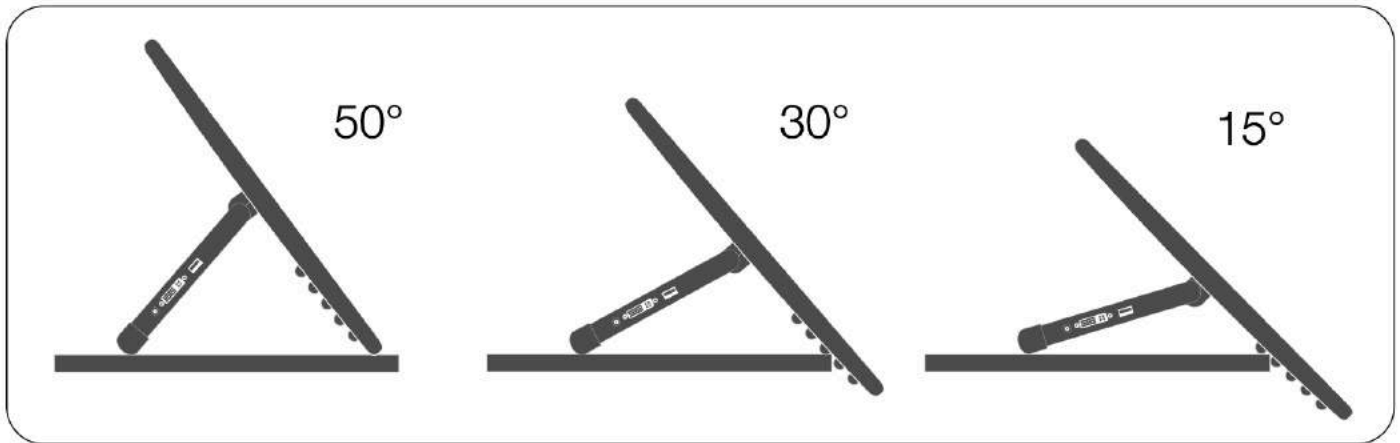


CAUTION: Do not position the monitor close to a 90° angle, otherwise the monitor will become unstable and could fall.*

*Artisul is not responsible for any dropped or damaged tablets.

Positioning the Stand

The Built-In Stand can be positioned for optimal working and viewing angles. The ridges on the back of the D22 allow it to also be positioned at the edge of desks for detailed work.



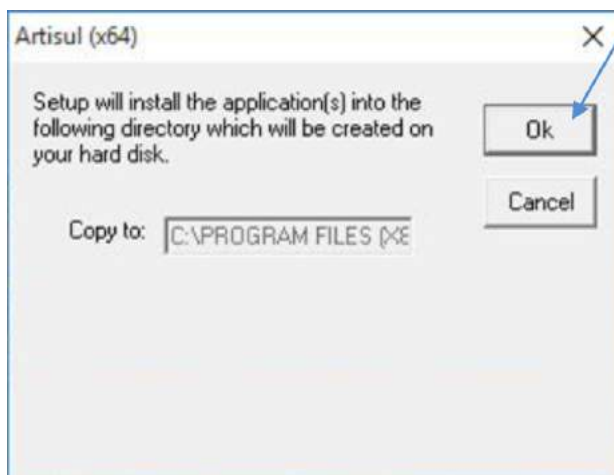
VESA Arm Mount Compatible: The Artisul D22 can be used with a VESA arm mount. Please use caution when installing a VESA arm to the D22.

INSTALLATION ON WINDOWS

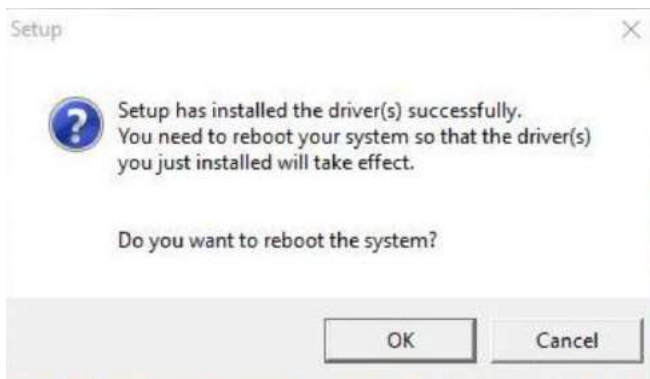
RECOMMEND: Remove any existing tablet drivers before installing the ARTISUL driver. This includes any pen tablet driver from other manufacturers. This is to ensure your driver's performance will not be affected.

Please run setup as administrator.

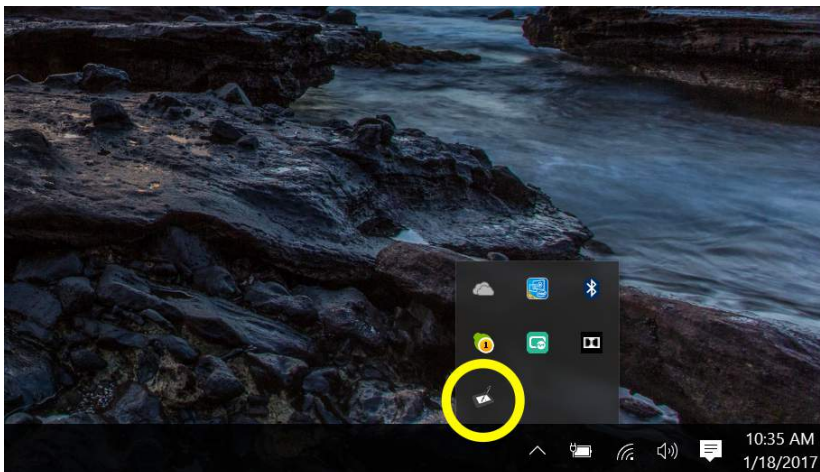
1. Download the driver from <https://artisul.com/downloads/>.
2. Decompress the driver file and run SETUP.EXE.
3. When installing the driver, follow the installation instructions on your screen. Press Ok.



4. After the installation has completed, reboot your computer.



5. After you have finished the driver installation and restarted your computer. If the device has been successfully installed, you will see a small ARTISUL icon appear in the system tray, which is normally located at the lower right-hand corner of the screen.



NOTE: Please connect your ARTISUL Pen Display to your computer before opening graphics software or app.

USAGE TIPS

Double Tapping

- To double tap with the U Pen (equivalent to a double click with a mouse), quickly lift the pen tip up away from the ARTISUL display before returning for the second tap.

Scrolling Function of Digital Pen

- To scroll on a page, press the first button on the Monet Pen (same function as the mouse middle button) over the ARTISUL display.
- If you have customized your Monet Pen, you must reset the button to *Middle Button* in the ARTISUL driver Pen settings in order to use this function.

Traditional Mouse Setup

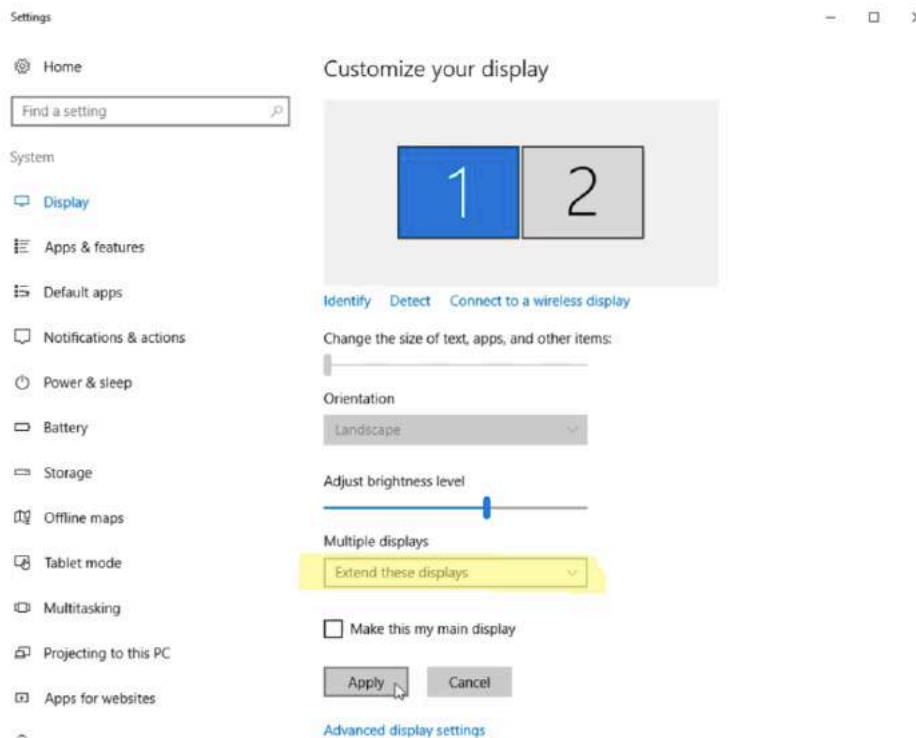
You can have both the ARTISUL Pen Display and a traditional mouse setup to your computer at the same time. However, only one device is able to actively work at a time. You cannot use the mouse and Monet Pen at the same time.

Monitor Mapping

How to Change to Extended Display

Extended Display means you work with a larger Windows desktop area spanning your computer monitor and your Artisul LCD Display. Applications can be moved from one display to the other, and will allow you to work in different screen resolutions.

1. Right-click your desktop and select **Screen Resolution**.

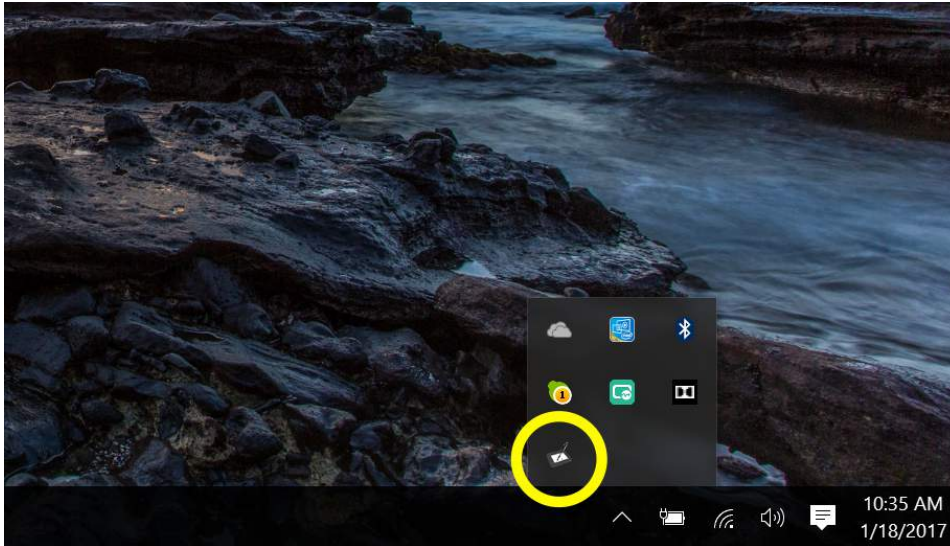


2. In *Multiple Displays* dropdown, change to [**Extend these displays**].



3. If your computer is equipped with more than one monitor, your ARTISUL pen display will map to the monitors based on how they are configured in the DISPLAY PROPERTIES control panel.
4. After you have correctly configured your computer for multiple monitors, you can then adjust your ARTISUL pen display mapping by opening the ARTISUL panel and changing the appropriate

options. This enables you to toggle the current ARTISUL mapping and screen cursor between the system desktop or primary display and your other monitors.

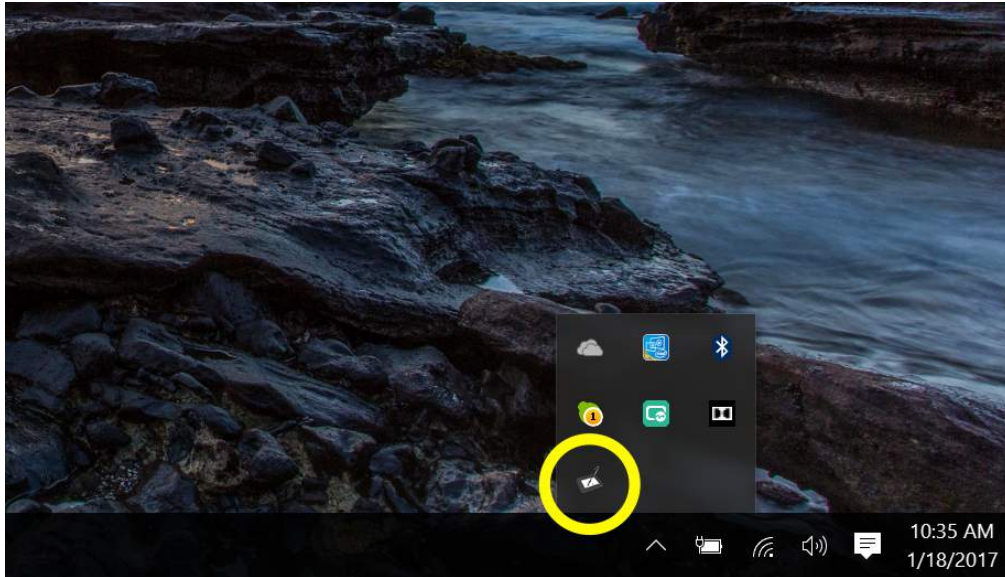


Note: 11. Under the “Duplicate” display mode of the “Multiple Display” function, the display resolution of your monitor must be set to the same resolution as your ARTISUL. Otherwise, your pen cursor will be misplaced on the screen. For ARTISUL D22, please make sure the other monitor resolution is set to 1920 x 1080.

II. Artisul Display Configuration

You may configure your ARTISUL Pen Display by modifying the functions of the pen tip and the two side buttons.

- Tap on the ARTISUL icon in the system tray, usually located at lower right-hand corner of the screen.



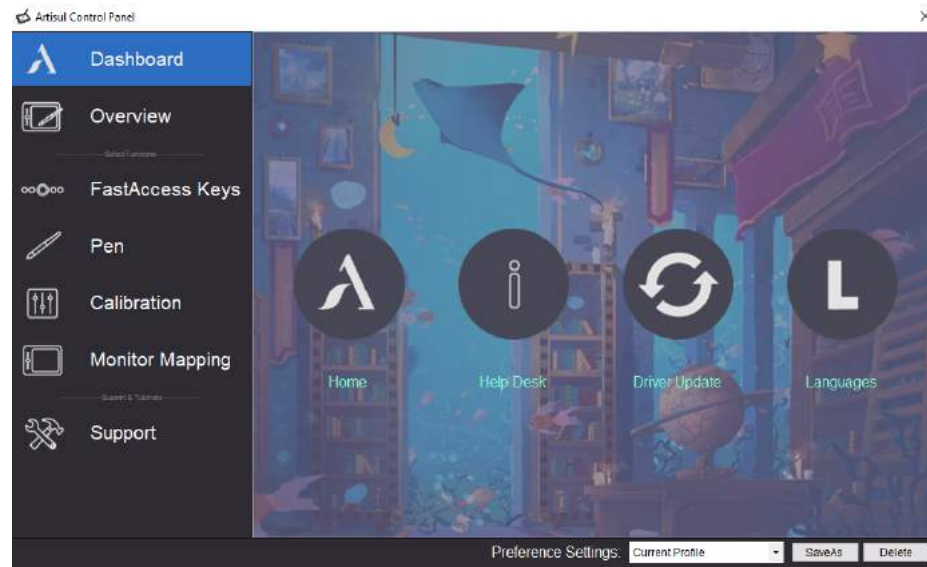
Driver Settings

The Artisul Control Panel is divided into 7 tabs:

- Dashboard
- Devices
- HotKeys
- Pen
- Calibration
- Support
- Save & Backup

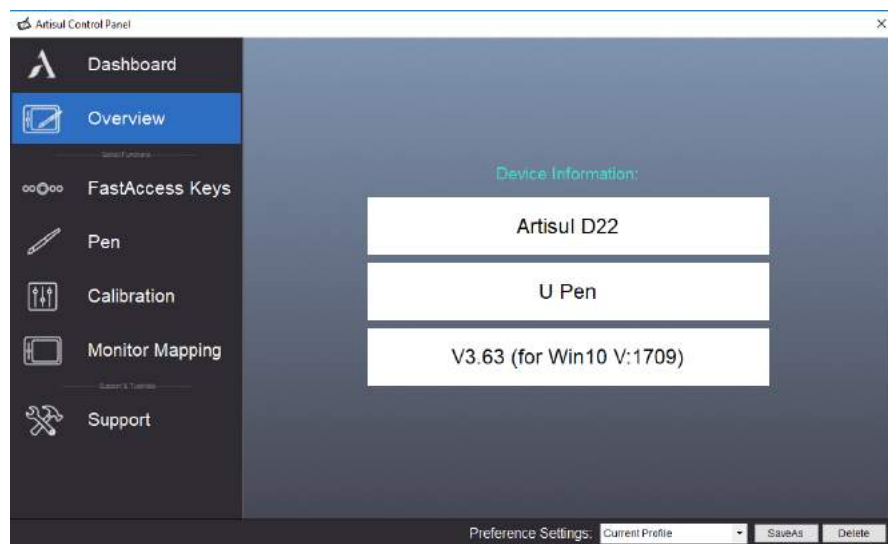
Dashboard

The Dashboard tab can help you connect to the ARTISUL website. Click Home to go to our website.



Devices

The Devices tab shows the device currently in use and the driver version being run.

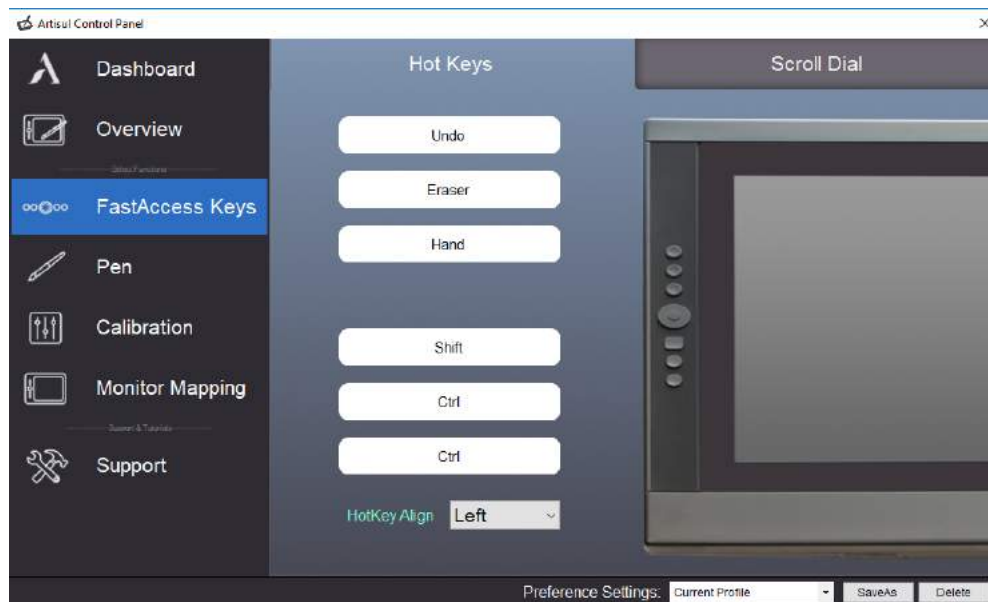


- Note: If nothing is shown in Device Information, make sure your ARTISUL pen display is properly connected to your computer. Unplug and re-plug if problem still persists.

HotKeys

Customize the *FastAccess* buttons and *QuickDial* from the FastAccess Keys tab.

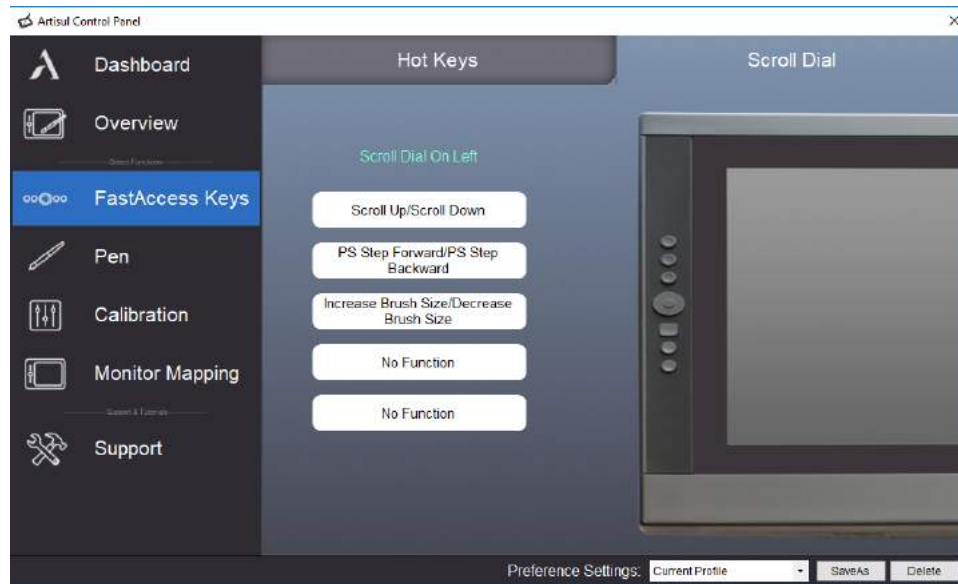
Both sides of *FastAccess* keys are identically programmed for easy right or left handed use.



- *Redefine FastAccess Key*: Click on the title of the button. A dropdown menu will appear with a list of tool options. Choose the one you want to use.
- *Custom Define*: At the bottom of the dropdown menu, choose Custom. This will allow you to input a custom keyboard shortcut.
- *Note*: Software keystrokes are based on English input methods. If not already, set to English when using HotKeys on your Artisul pen display.
- *Note*: Most creative software will not accept keystroke inputs when you Guadi Pen is still in use or when your Guadi Pen is still within the detectable cursor range. To avoid invalid keystroke actions, hold the pen away from the screen before pressing your FastAccess button. (Hold Gaudi Pen at least 1.5" away from the surface of the screen.)

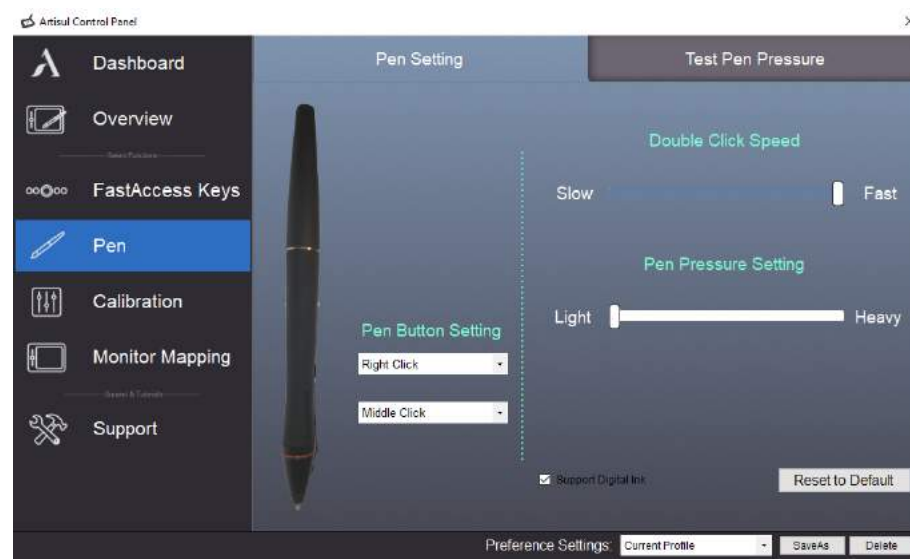
Scroll Dial

You can define 5 functions to the QuickDial. Tap on *Scroll Dial* button to select the function you would like to use.



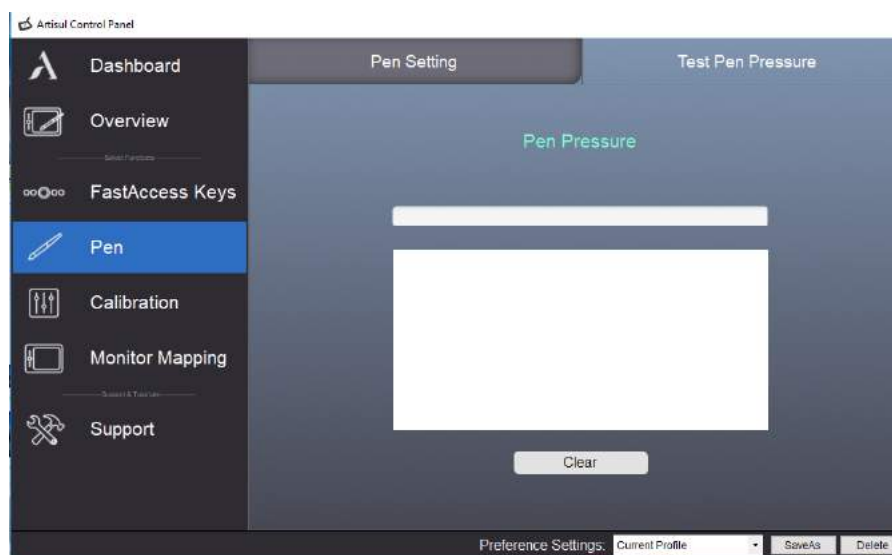
- To switch between functions, press down on the edge of the QuickDial. You will see the function name briefly at the bottom of the screen when switched.

Pen



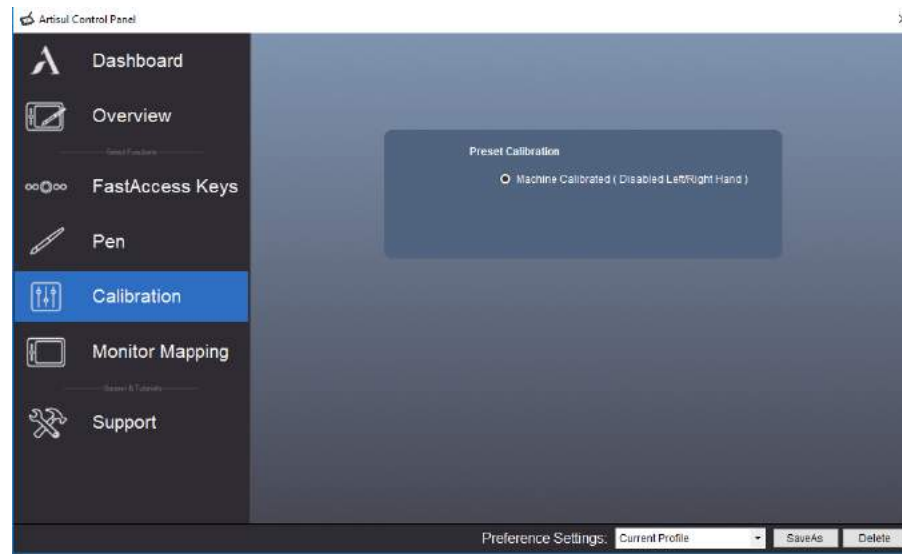
- *Pen Setting*
 - **Pen Button Settings:** Customize the functions of the two side buttons on the Gaudi Pen. Click the button name and choose a function from the dropdown menu.

- **Double Click Speed:** Move the slider toward “Slow” if you want more time in-between double tapping the pen tip. Move the slider toward “Fast” if you want less time in-between double tapping the pen tip.
- **Pen Pressure Setting:** Move the slider in the sensitivity bar to adjust pen pressure response. Light means your ARTISUL pen display will recognize the slightest nuance of pressure, while heavy means it will take more pressure for the pen tip to register.
- **Left Hand/Right Hand:** If you’re left-handed, choose Left Hand. If you’re right handed, choose Right Hand.
- **Reset to Default:** Return all Pen Settings to default by tapping *Reset to Default*.
- **Support Digital Ink:** Select to support the pressure of digital ink settings.
- **Pen Pressure:** Using the Gaudi Pen, press down in the white rectangle. Use different levels of pressure to test if pen pressure sensitivity is working on your computer.



- **Note:** Please close the ARTISUL Control Panel when finished with the Pressure test.

Calibration

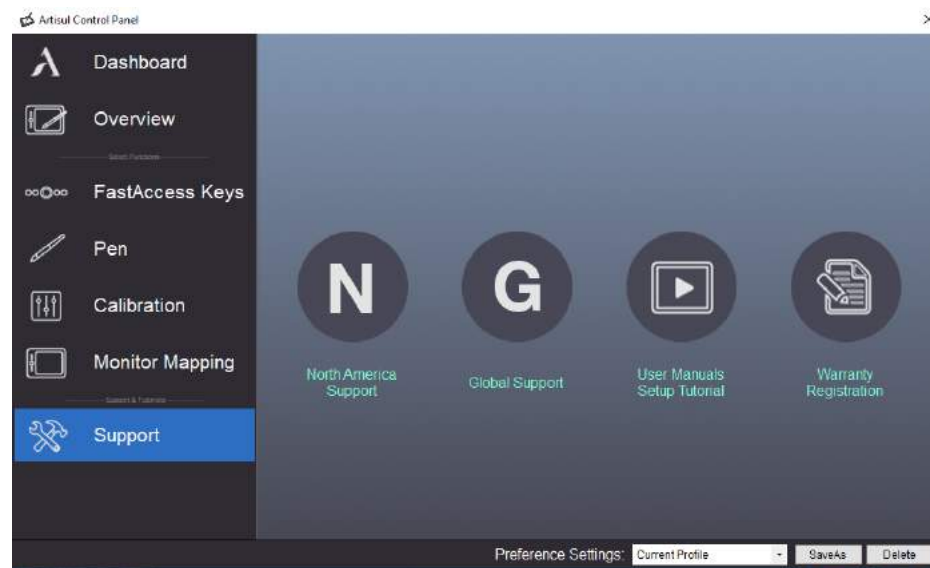


- **Monitor:** If working in Extended Display, choose which monitor you want your ARTISUL pen display to track with. Most likely, you will want it to track with the ARTISUL display. To learn which monitor is Monitor 1 and which is Monitor 2, go to Start > Settings > Display and click Identify.
- **Calibration:** Click “Calibrate my U pen” to activate the calibration screen. Press the crosses that appear on the screen with the U-Pen to calibrate the screen.
- **Open Monitor Tuner:** Monitor Tuner can help you configure the ARTISUL display’s *Brightness*, *Contrast*, and *Color Temperatures*. Press “Open Monitor Tuner” to open “ARTISUL Monitor Tuner” utility.



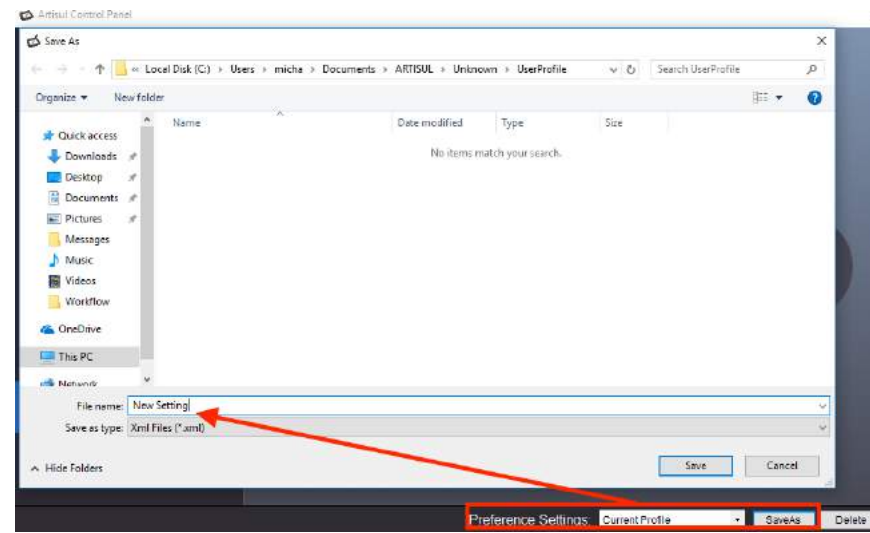
- Calibrate Display Options: These options are there to assist you with preparing your designs for CMYK printing. You may choose a different calibrated display setting depending on the type of paper you will be printing your work on, and the working light environment (this includes sunlight or the color temperature of the light bulbs or tubes).
- Note: The “Calibrated Pen Displays” are only there to assist you, to prepare your work for best accuracy before CMYK printing. Refer to guidelines set by your printing services.
- Note: When opening ARTISUL Monitor Tuner, the system will need up to 30 seconds or more to access the necessary information for your monitor. While the system is calling up the Tuner, it is possible for the screen to flicker once or twice.

Support



- Support Forum: Connect to our online community support forum.
- User Manuals/Setup Tutorials: Helpful guides to setting up your ARTISUL pen display.
- Warranty Registration: Link to our product registration webpage.
- Languages: English, Chinese

Save & Backup

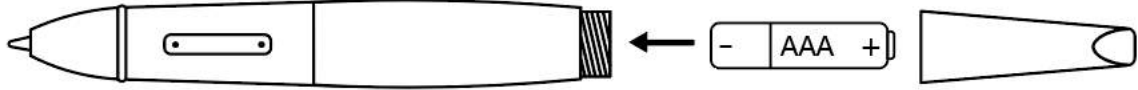


- Preference Settings: Save your settings. Beneficial when using many apps & software with different hotkeys preferences.
- Load your Preferences: From the Preference Settings dropdown tab, choose a previously saved HotKey settings.

III. Setting up your Gaudi Pen and Changing the Pen Tip

Setting up Your Gaudi Battery Pen

1. Twist off the top half of the pen.
2. Insert AAA alkaline dry battery with “-” side facing into the main body. (Battery is not included)
3. Twist the top half of the pen back on.

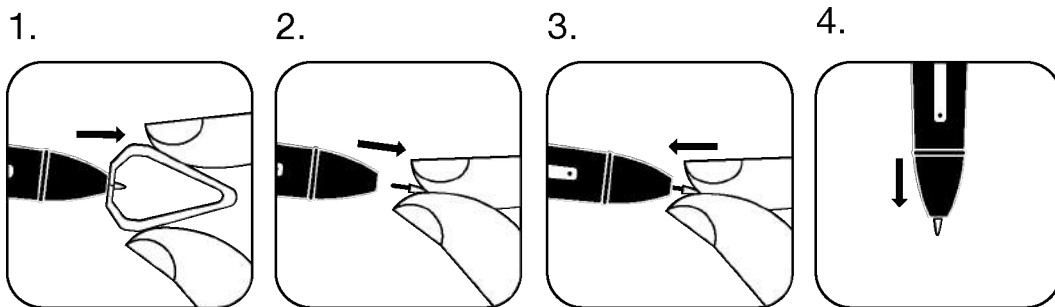


Note: When the residual battery capacity is not enough, the center of the side button will light up blue. This means you must change the battery.

Changing Pen Tips

1. You will need the pen nib removal tool.
2. For D22, use the pen nib removal tool to pull out the pen nib.
3. Place new pen nib into the Gaudi Pen.
4. Push the Gaudi Pen down on a hard surface to fully secure the new pen nib in place.

D22



IV. Taking care of your ARTISUL Pen Display

1. Keep the Gaudi Pen and the ARTISUL LCD screen surface clean. Dust and dirt particles can stick to the pen and cause excessive wear to the screen protector.
 - a. Wipe the LCD screen gently with a soft cloth.
 - b. Stubborn stains may be removed with a screen-cleaning cloth.
2. Keep cables neat and orderly. Overly bending the cables at the ends may cause damage to the wires inside.
3. Keep the Gaudi Pen in a safe place when not in use. A damaged pen may have adverse effects on pressure sensitivity.

Note:

1. Unplug all ARTISUL cables before you begin cleaning your ARTISUL.
2. Never spray water or detergent directly on your ARTISUL. It may cause damage.
3. Never use strong solvent such as a thinner or alcohol for cleaning.
4. Never reverse or compress the ARTISUL cables and don't bend it over 90°. It may cause damage to the cables.

V. Settings for graphic applications

Some applications need their settings changed so the ARTISUL can act just the way you like.

A. SAI

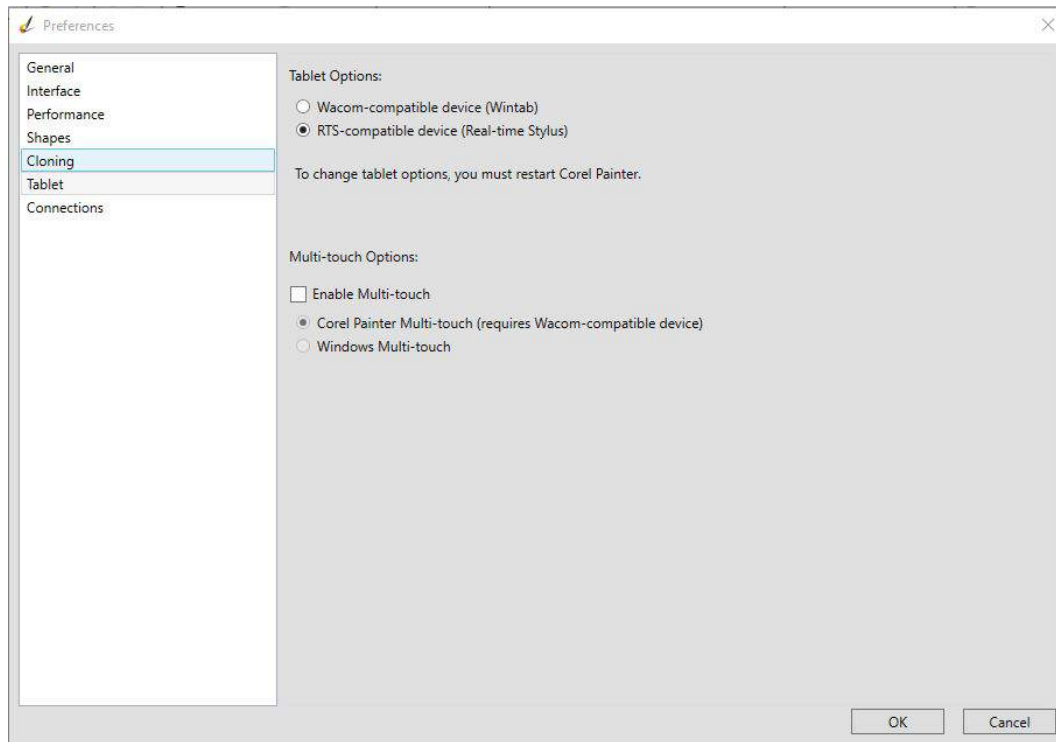
- a. Find *[misc.ini]* in SAI folder.
- b. Right click on *[misc.ini]* and select "Edit."
- c. Find *TabletMouseSimulation = 0*, then modify 0 to 1 and save the file.
- d. Restart SAI.

B. SAI 2

- a. Find *[Sai2.ini]* in SAI folder.
- b. Right click on *misc.ini* and select "Edit."
- c. Find "*AlwaysUseTabletPCApi= no*" then modify no to yes and save the file.
- d. Restart SAI 2.

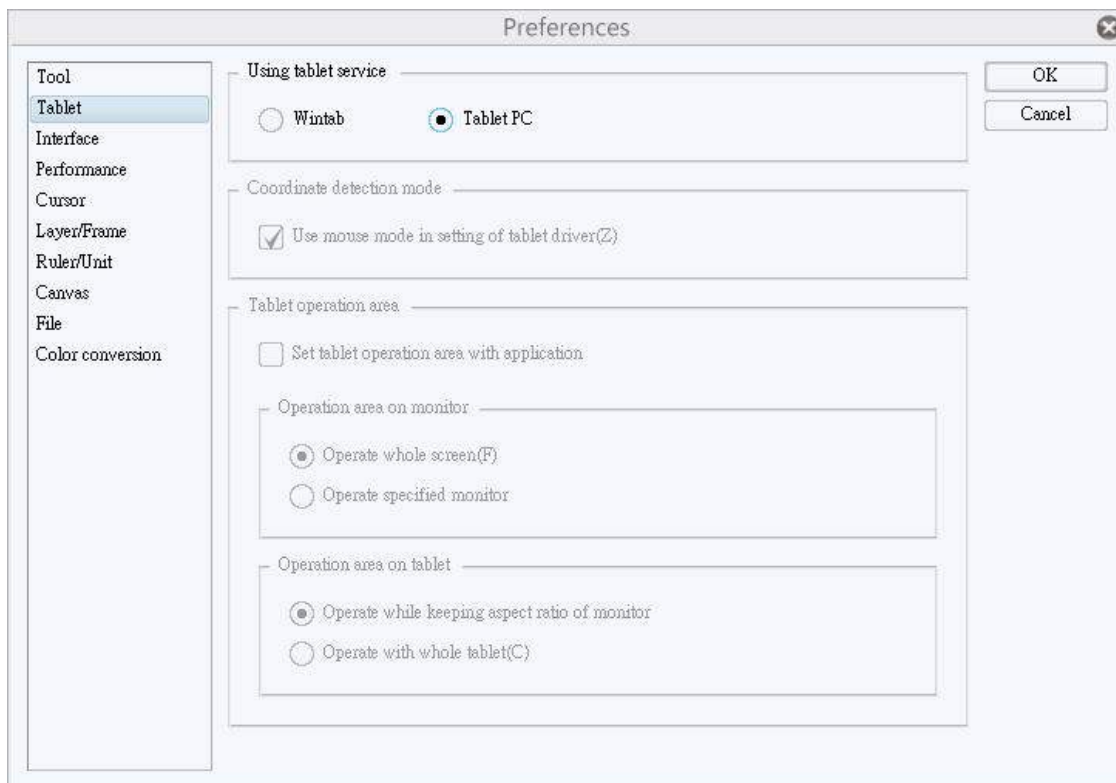
C. Corel Painter 2015

- a. Please select *Edit → Preferences → Tablet*.
- b. In Tablet options check "RTS-compatible device (Real-Time Stylus) as shown below.
- c. Multi-touch Options: Please uncheck "Enable Multi-touch."



D. Clip Studio Paint

- Run Clip Studio Paint and press Ctrl + K to open [Preferences].
- Select "Tablet."
- In "Using tablet services" select *Tablet PC*.
- Press OK and restart Clip Studio Paint.



VI. Frequently Asked Questions

Q: How can I download the latest driver software?

A: You can download new drivers from our website (www.artisul.com/downloads/).

Q: My ARTISUL screen is not turning on. What can I do?

A: Follow these steps below:

- A. Remove the USB and HDMI cables from your computer.
- B. Uninstall the ARTISUL driver from your system.
- C. Re-connect your ARTISUL USB and HDMI cables to your computer.
 - a. If you see the ARTISUL logo appear briefly but the screen goes dark, there is an HDMI connection issue. Please try using a different HDMI port on your computer, or checking your computer settings to make sure the HDMI port supports display output.
 - b. If you do not see the ARTISUL logo appear, there is a USB power connection issue. Please try connecting the USB to a different port on your computer.
 - c. If your desktop screensaver is black or a dark color, please try switching from Extended Display to Duplicate Display in your computer's display settings.
 - d. If the issue is still not resolved, please contact ARTISUL Support: support@artisul.zendesk.com

Q: Pen will not work after driver is installed. How do I fix this?

A: Follow these steps below:

- A. Refer to the ARTISUL user manual for how to install hardware. Disconnect your ARTISUL tablet from your computer and follow the hardware installation process again.
- B. Connect the ARTISUL to another USB port, preferably one directly connected to the motherboard.
- C. Remove any other USB devices connected to your computer
- D. Uninstall the ARTISUL driver from your computer and restart your computer. Test the ARTISUL tablet and pen to see if it works without the driver installed.
- E. Please download and install the latest ARTISUL driver (www.artisul.com/downloads/).
- F. Check if your tablet and pen will work with the latest driver after restarting your computer.
- G. If the above steps do not work, test on another computer. If your ARTISUL works on another computer, the issue may be other drivers or software on the original computer. Contact your computer manufacturer for additional troubleshooting.

Appendix 1: On-Screen Display (OSD) Function



OSD Function – Press the Menu (M) Button to activate the OSD Menu. The OSD Menu has 4 sections:

- Picture
- Color
- Tracking Control
- Setup

Picture



Brightness – Adjust the image and background screen brightness.

Contrast – Adjust the image brightness in relation to the background.

Gamma – Color Gamma adjustment

Color Presets

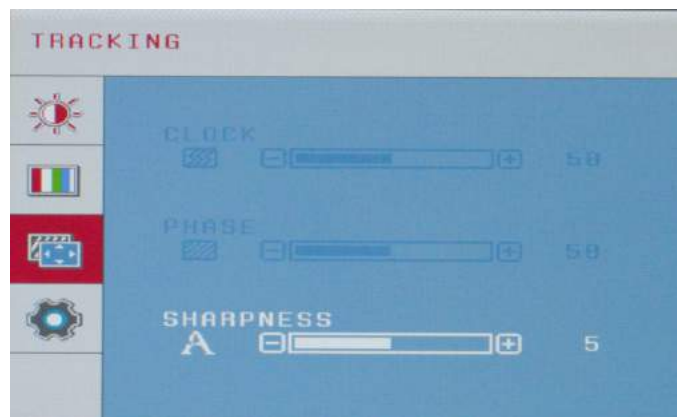


sRGB mode - Sets your screen colors to adapt to the color standards used in the image technology industry.

Preset Warm (6500) mode - More red and closer to paper white.

Cool (9300) mode - More blue and brighter.

Tracking Control



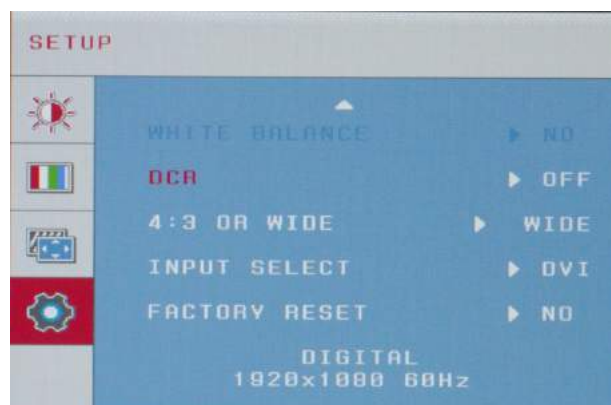
Setup



Language – OSD Language selection

OSD Position:

- *Horizontal* – To adjust the OSD menu left or right
- *Vertical* – To adjust the OSD menu up or down.



DCR – Dynamic Contrast Ratio

4:3 or WIDE - Select screen ratio between WIDE and 4:3

Factory Reset – Reset the currently highlighted control to the factory setting.

Appendix 2: Troubleshooting

Artisul display does not work.

- Remove the USB and HDMI cables from the computer.
- Uninstall the Artisul Driver from the computer.
- Reconnect the USB and HDMI cables to the computer.
- Download the latest version of the driver from our website.
- Follow installation instructions and restart computer.
- Find the Artisul Icon in the system tray, usually at the bottom right-hand corner of the screen.
- Test Pressure Sensitivity in the Artisul Driver.

No display and the power button LED light isn't on.

- Verify that all cables are connected properly between the Artisul pen display and the computer.
- (For D13) Verify if optional AC Power Adapter can power Artisul pen display.

No display, but power button LED light is on.

- Your computer may be in power management mode. Please move the mouse, or press any key on your keyboard.
- Verify that the HDMI cable is properly connected between the Artisul pen display and the computer.
- Verify display settings on your computer.
- Verify color of screensaver. If your screensaver is black or a dark color, try dragging something over to the Artisul display. Try dragging from all directions.

The color white does not display as white.

- Check the color profile setting that you are using with your Artisul display.
- Open the Artisul Monitor Tuner. Press "Restore Default" to restore factory settings.
- Verify the HDMI cable is properly connected.

The pen does not work.

- Verify the USB cable is properly connected to the Artisul display and the computer.
- If you have any third-party tablet drivers installed on your computer, uninstall them and restart your computer.
- Only use the Monet Pen or other official Artisul pens. Third-party pens are not guaranteed to work.
- Uninstall the Artisul driver, download the latest driver from our website, and install again.

No pen pressure.

- Verify the application you are working in supports pen pressure. If it does, check if pen pressure functionality is turned on for that application.
- Try using pen pressure in another application.
- Uninstall the Artisul driver, download the latest driver from our website, and install again.
- Check "Support digital ink" in the Pen tab in the Artisul driver.
- Some applications need its pen pressure settings adjusted. Adjust accordingly.
- Restart your computer.

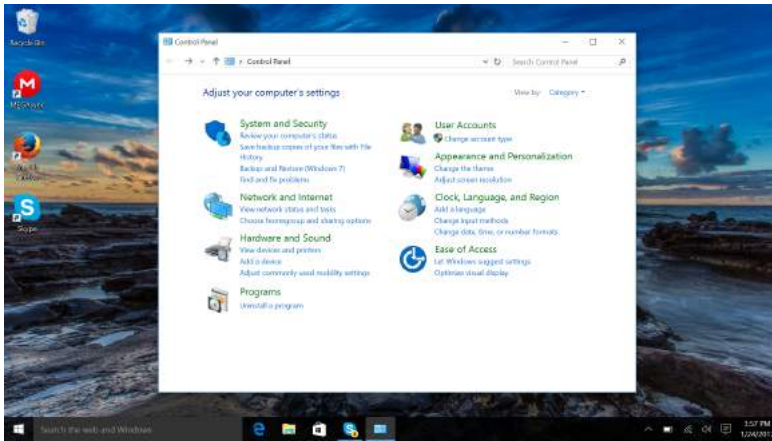
Cursor is offset in application.

- Update application.
- Run application as the administrator.
- Some applications need its pen pressure settings adjusted. Adjust accordingly.

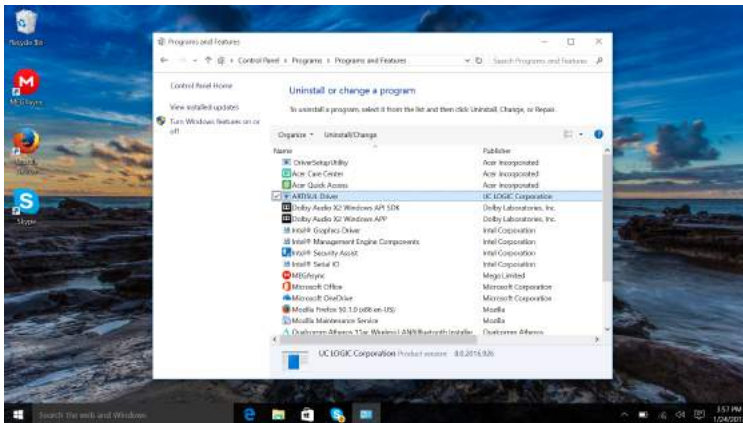
Can't find a solution? Visit <https://artisul.zendesk.com/hc/en-us> from more help.

Appendix 3: Uninstall ARTISUL Driver

1. Go to “Control Panel.”



2. Under Programs, click “Uninstall a program.”
3. Click on ARTISUL Driver.



4. Click “Ok” when the uninstall instructions show on your screen.



Appendix 4: HotKey Comparison Tablet

Hot Key	Keyboard Shortcuts
Copy	Ctrl c
Cut	Ctrl x
Paste	Ctrl v
Undo	Ctrl z
Close the Active Item/App	Alt F4

Photoshop Tools	
Hot Key	Keyboard Shortcut
Image Size	Alt Ctrl i
Fit on Screen	Ctrl 0
Actual Pixels	Alt Ctrl 0
Zoom In	Ctrl +
Zoom Out	Ctrl -
Undo/Redo	Ctrl z
Step Forward	Shift Ctrl z
Step Backward	Alt Ctrl z
Cut	Ctrl x
Copy	Ctrl c
Paste	Ctrl v
Free Transform	Ctrl t
Copy Merged Layers	Ctrl Shift c
New Layer	Ctrl Shift n
Layer via Copy	Ctrl j
Merge Layers	Ctrl e
Group Layers	Ctrl g
Create/Release Clipping Mask	Alt Ctrl G
Go to Previous Layer	Alt [
Go to Next Layer	Alt]
Deselect	Ctrl D
Inverse (Selection)	Shift Ctrl i
Select All Layers	Alt Ctrl a
Hide/Show Palettes	Tab
Flatten Layers and Keep	Alt Ctrl Shift e
Decrease Brush Size	[
Increase Brush Size]
Decrease Brush Softness	Shift [
Increase Brush Softness	Shift]
Save As	Ctrl Tab
Save for Web	Alt Ctrl Shift s
Lasso	l
Magic Wand	w
Eyedropper	i
Crop	c
Healing Brush	j
Brush	b
Clone Stamp	s

Eraser	e
Type	t
Hand	h
Toggle Screen Modes	f
Move Tool	v
Selection Tool	a

Illustrator Tools	
Hot Key	Keyboard Shortcut
Group	Alt Ctrl i
Ungroup	Ctrl Shift g
Select All	Ctrl a
Lock Selection	Ctrl 2
Select Artwork in Action Board	Alt Ctrl a
Deselect All	Ctrl Shift a
Lock All Deselected Artwork	Alt Ctrl Shift 2
Unlock All Artwork	Alt Ctrl 2
Undo	Ctrl z
Paste in Front	Ctrl f
Paste in Back	Ctrl b
Send to Front	Ctrl Shift]
Send to Back	Ctrl Shift [
Flush Left	Ctrl Shift l
Flush Right	Ctrl Shift r
Center	Ctrl Shift c
Smart Guides	Ctrl u
Actual Size	Ctrl Shift 0
Fit In Window	Ctrl 0
Save As	Ctrl Shift s
Save for Web	Alt Ctrl Shift s
Selection	v
Direct Selection	a
Magic Wand	y
Pen	p
Lasso	q
Type	t
Paintbrush	b
Pencil	m
Eraser	Shift e
Eyedropper	i
Rotate	r
Free Transform	e
Toggle Screen Mode	f
Hand	Spacebar

Clip Studio Paint Tools	
Hot Key	Keyboard Shortcut
Select All	Ctrl a
Clear outside of selected area	Shift Backspace
Clear Selection	Ctrl d
New Raster Layer	Ctrl Shift n
Combine to layer below	Ctrl e
Combine selected layer	Alt Shift e
Combine showing layer	Ctrl Shift e
Switch selected layer (above)	Alt]
Switch selected layer (below)	Alt [
Invert selected layer	Ctrl Shift i
Hue/Saturation Luminosity	Ctrl u
Reduce Opacity	Ctrl [
Increase Opacity	Ctrl]
Zoom in	Ctrl +
Zoom out	Ctrl -
Ruler	Ctrl r
Fit to Screen	Ctrl 0
Pixel Size	Alt Ctrl 0
Snap to Ruler	Ctrl 1
Eraser	e
Brush	b
Pen	p
Fill	Alt Backspace
Free Transform	Ctrl Shift t
Scale up or down / Rotate	Ctrl t
Text	T
Color Picker	Alt
Rotate	r
Switch Main/Sub Colors	x
Switch drawing and transparent colors	c
Clip at layer below	Alt Ctrl g

Corel Painter Tools	
Hot Key	Keyboard Shortcut
Undo	Ctrl a
Redo	Ctrl y
Copy	Ctrl c
Paste (as new object)	Ctrl v
Copy Visible	Ctrl Shift c
Send to Front	Shift Pageup
Send to Back	Shift Pagedown
Send Forward One	Ctrl Pageup
Send Backward One	Ctrl Pagedown
Duplicate	Ctrl d
New Layer	Ctrl Shift n
Group	Ctrl g
Ungroup	Ctrl u
Select All	Ctrl a
Paste in Selection	Ctrl Shift v
Select All Layers	Ctrl Shift 1
Copy Merged	Ctrl Shift c
Invert	Ctrl i
Zoom In	Ctrl +
Zoom Out	Ctrl -
Rulers	Ctrl Shift r
Fit in Window	F4
Save	Ctrl s
Export Source Image	Ctrl Shift s
Brush	b
Dropper (sample color)	d
Fill	Ctrl f
Rotate Canvas	e
Magic Wand	w
Text Tool	t
Layer Adjuster	f
Lasso	l
Use Last Used Filter	Ctrl /
Screen toggle mode	Ctrl m
Free Transform	Alt Ctrl t
Resize Canvas	Ctrl Shift r
Decrease Brush Size	[
Increase Brush Size]